

# The Feeding City

Could local agriculture feed our cities?

December 8<sup>th</sup> 2016,

Jan Eelco Jansma, Wageningen Plant Research



# Footprint of our diet (ha)



**Average**



**Vegetarian**



**Vegan**



# Jan Eelco Jansma

## Feeding the city

- Urban agriculture
- Governance of change
- Impact of Food

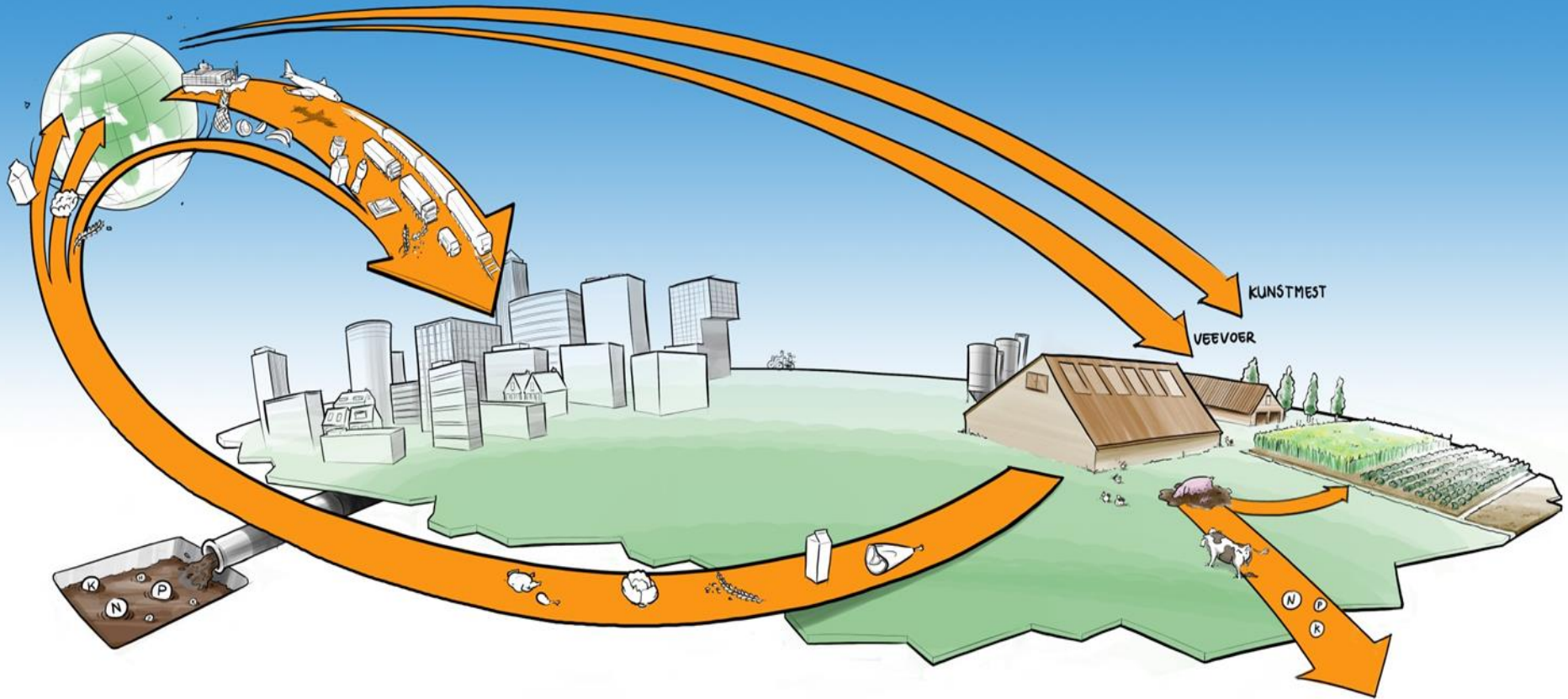
Wageningen Plant Research

AMS institute Amsterdam

Flevo Campus Almere



# Our Global Food System



# Our food system



**WAGENINGENUR**  
*For quality of life*

# Emergence of Urban Food Systems

Climate



FARMING  
THE CITY

Cohesion



Business



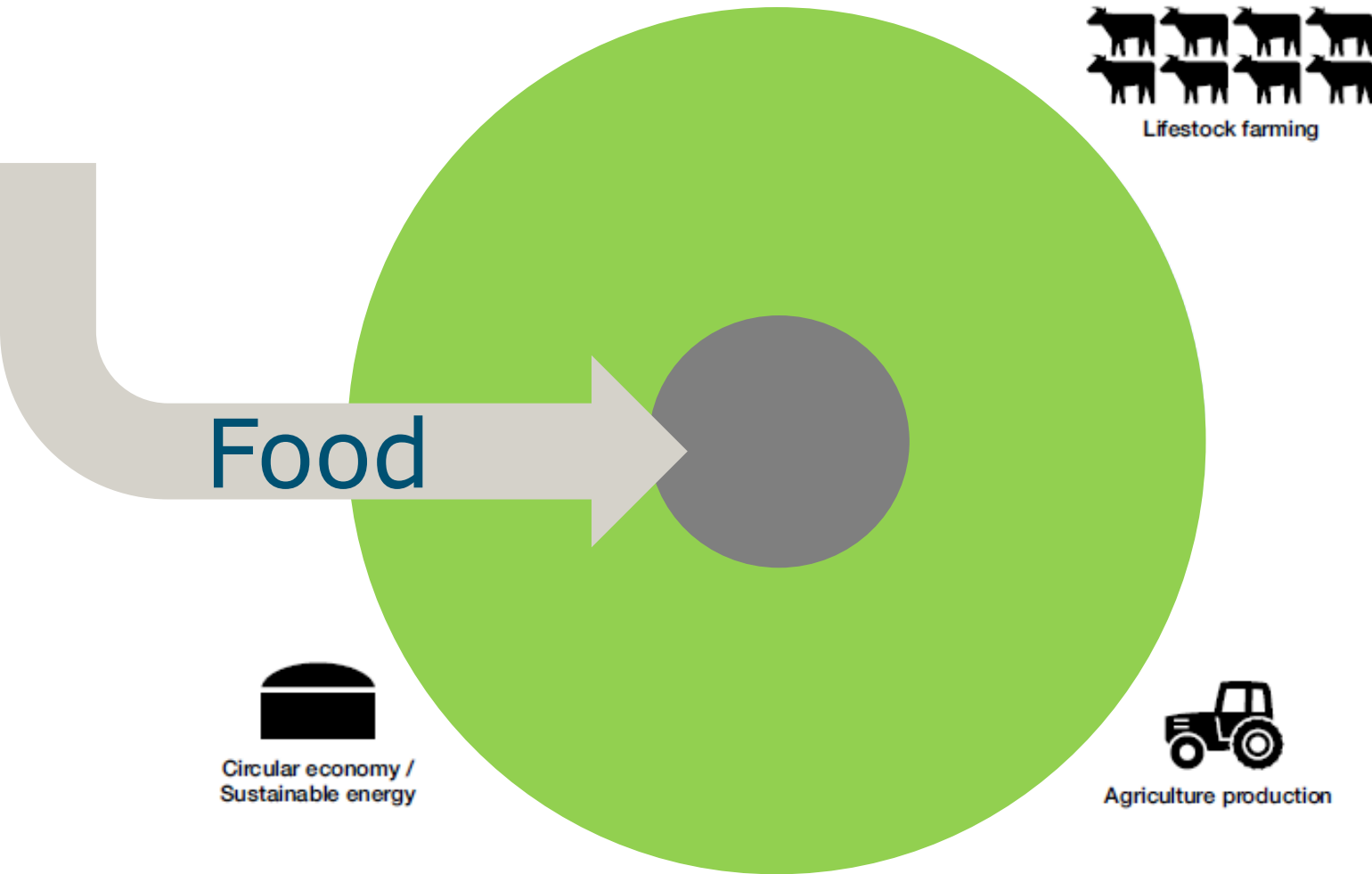
Innovation



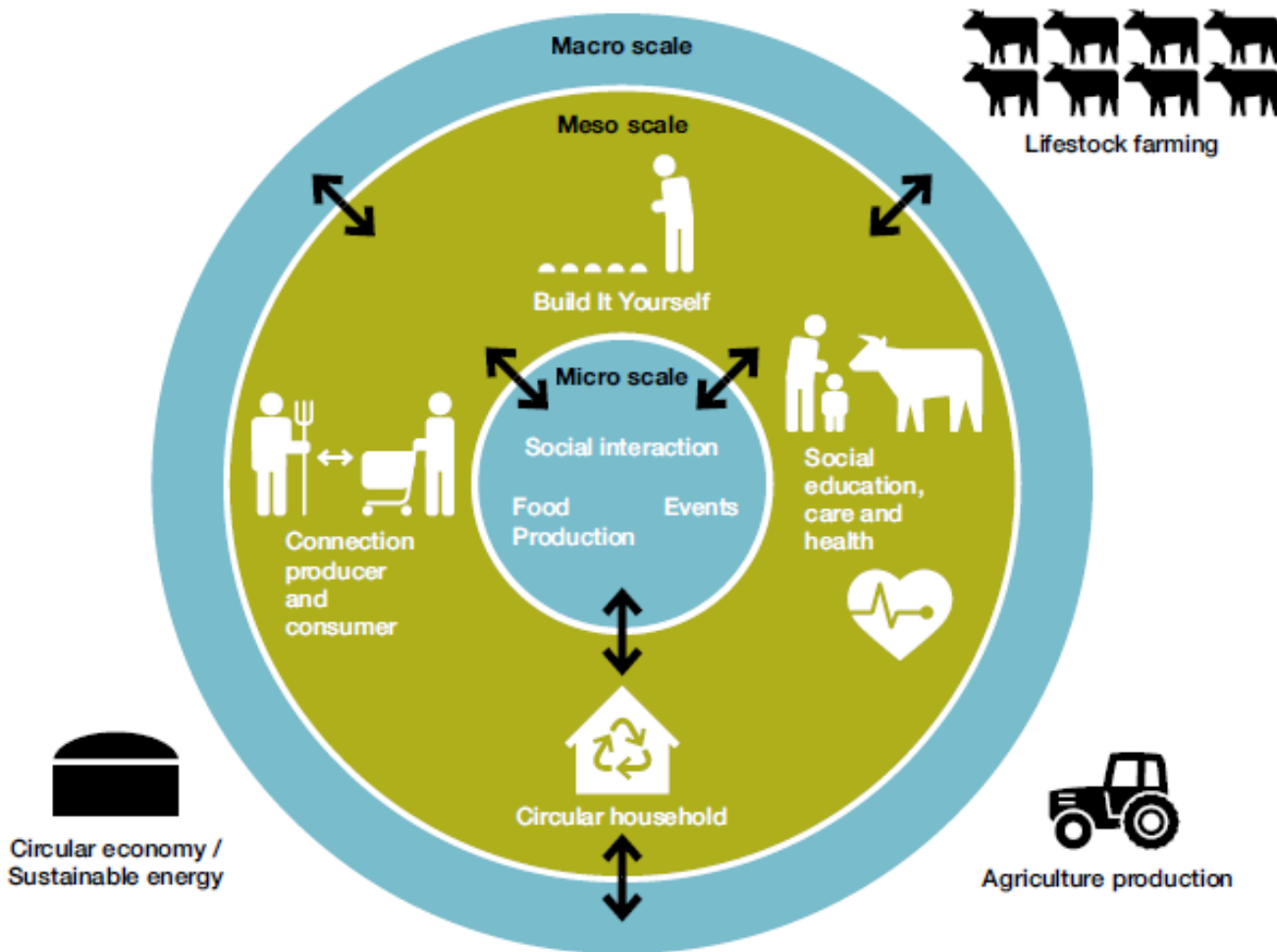
Education



# Global Food Systems



# Urban Food Systems



WAGENINGENUR

For quality of life



**Greetings from Almere!**



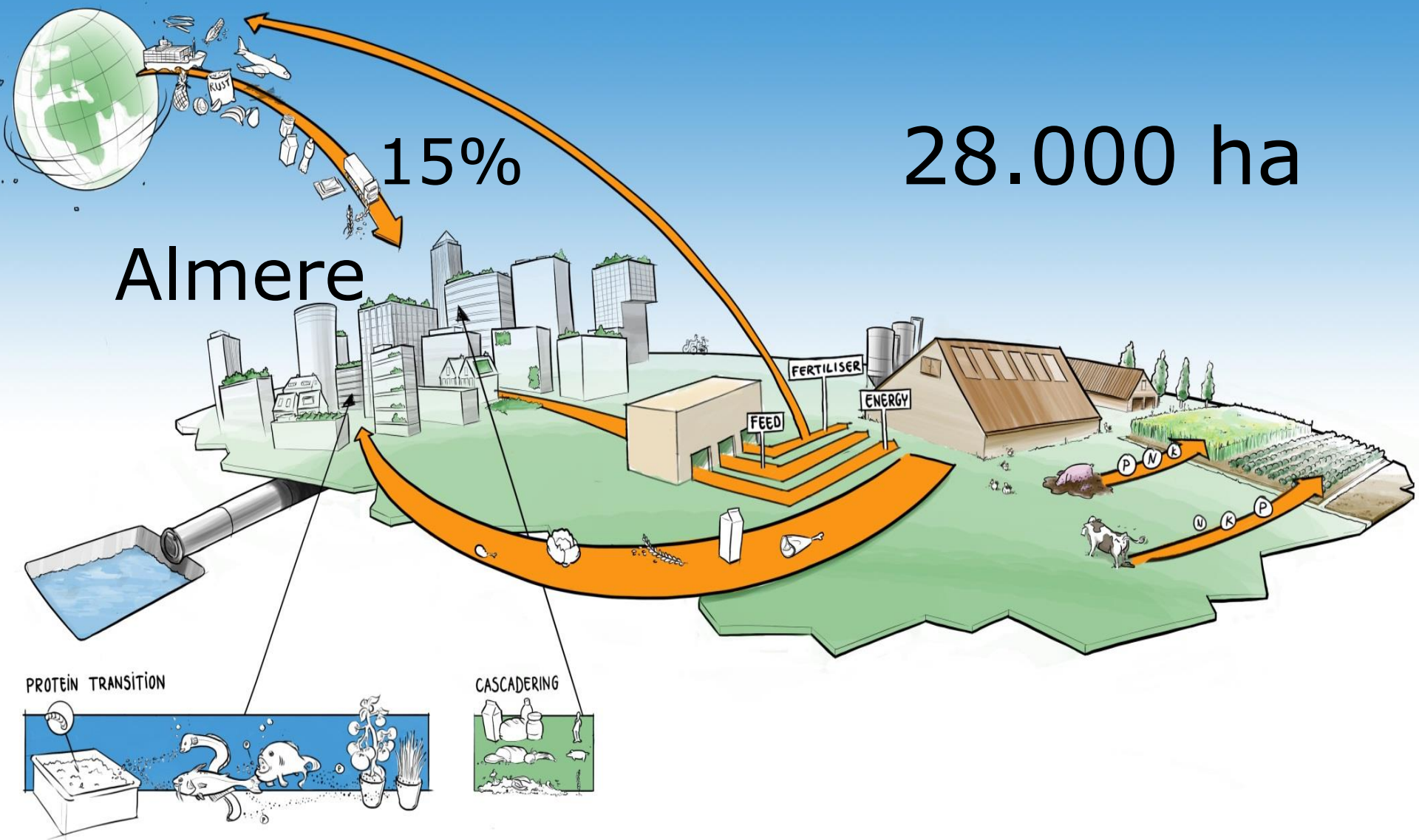


NL

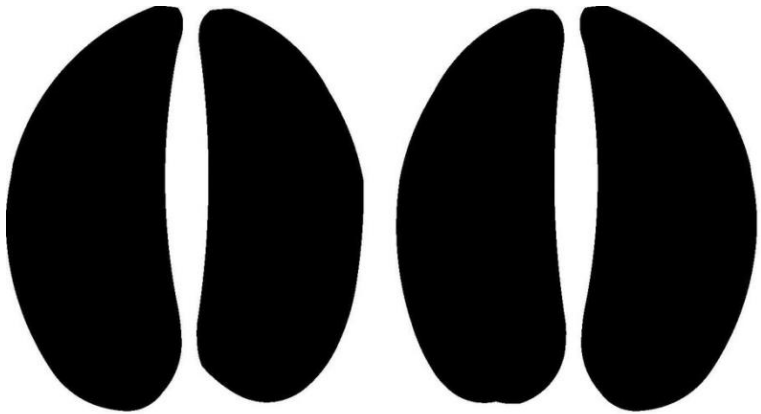
Almere

Amsterdam

Almere



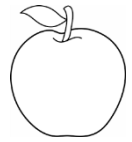
# The local-food-footprint of Almere



18.000 ha



1900 ha



350 ha



150 ha



8 ha



WAGENINGENUR  
For quality of life

# Workshop

In the workshop I would like to explore:

- I. the meaning of local-food-footprints
- II. how to organise urban food systems (based on what we know about the local-food-footprint)



# More Info

[www.wur.nl](http://www.wur.nl) Metropolitan Solutions

[www.urbanfoodprint.info](http://www.urbanfoodprint.info)

[www.stadlandrelaties.nl/en\\_us/](http://www.stadlandrelaties.nl/en_us/)



WAGENINGEN **UR**

*For quality of life*