



WAGENINGEN  
UNIVERSITY & RESEARCH

# Feeding cities and migration

## insights into the informal sector

[2282700540]  
2019-2022

November 2021

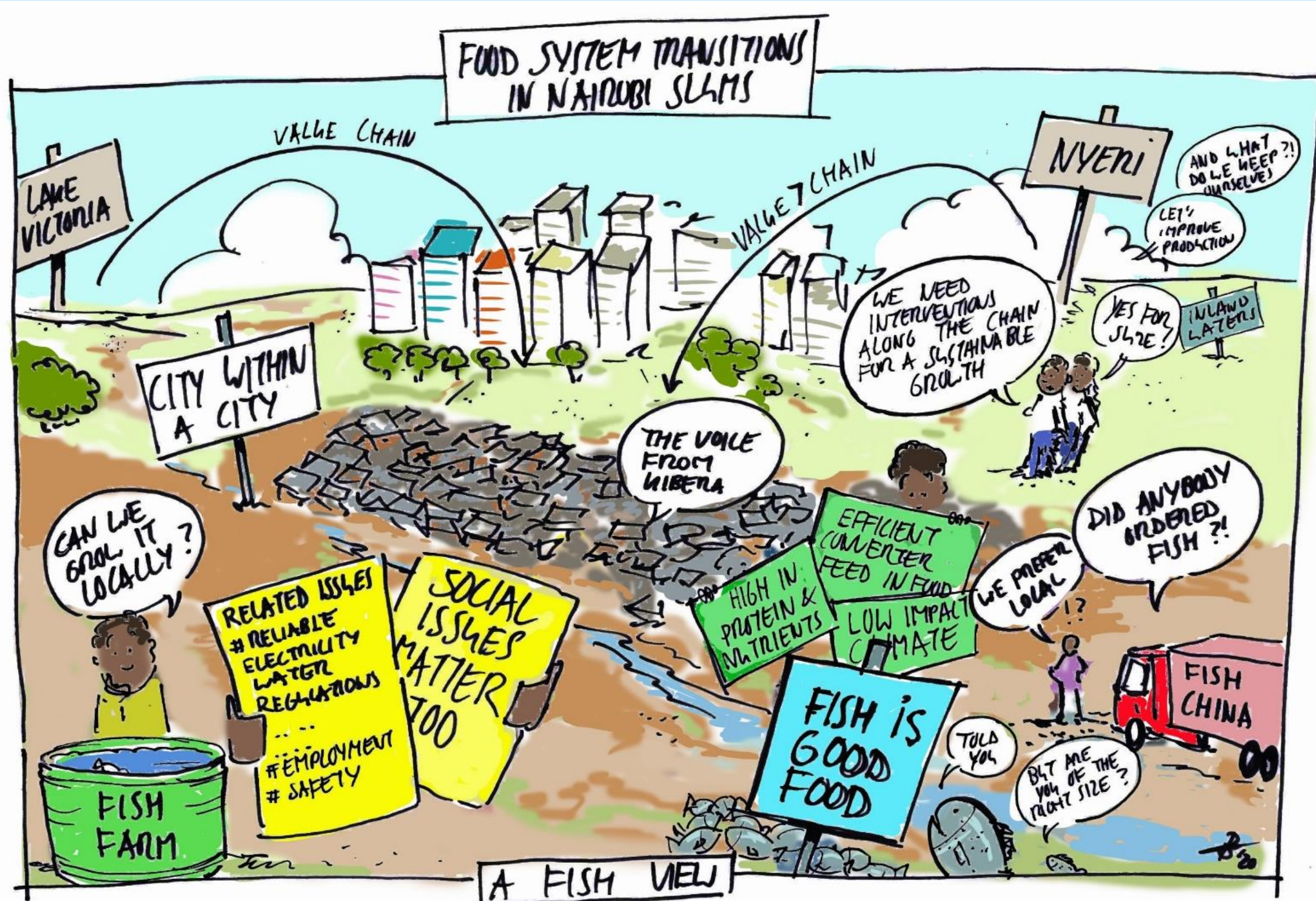
Project team: Bertram de Rooij, Katherine Pittore, Bob Castelein, Jan Broeze, Siemen van Berkum, Vincent Linderhof, Esther de Wit, Jolanda van den Berg, Jaap van Os, James Meadows, Peter Verweij, Katrine Soma, and many more... (WUR)

### Objectives

Feeding cities and migration settlements is dedicated to investigate urban-rural food systems in highly complex and dynamic contexts. The project reaches out to marginalized people in these complex realities, with an emphasis on changing demographics and migratory issues, informal settlements and systems. Three cases studies are core in our activities: Dhaka (Bangladesh), Kampala/Arua (Uganda) and Nairobi (Kenya). Objectives include:

- To unravel the informal community structures, value chains and governance
- To enhance spatial dimensions to investigate environmental issues and feedback loops
- To investigate food use and waste in informal settlements

This poster illustrates advancements made in the case study in Kenya, in which the challenges of one of Africa's largest slums are put in perspective and new value chains are being developed.



Fish food system involving informal settlements in complex system with vulnerable people

### External partners

- In Kenya: Egerton University, Laikipia University, CASK, The Nyeri Fish Farmer Cooperative, Nyeri County, FAO-KE, IFAD
- Kibera informal settlement, including 56 fish vendors, community lead who operates the fish outlet in Kibera; established by this project, including three freezers.
- The project has established a change that more and more small-scale businesses take part of.

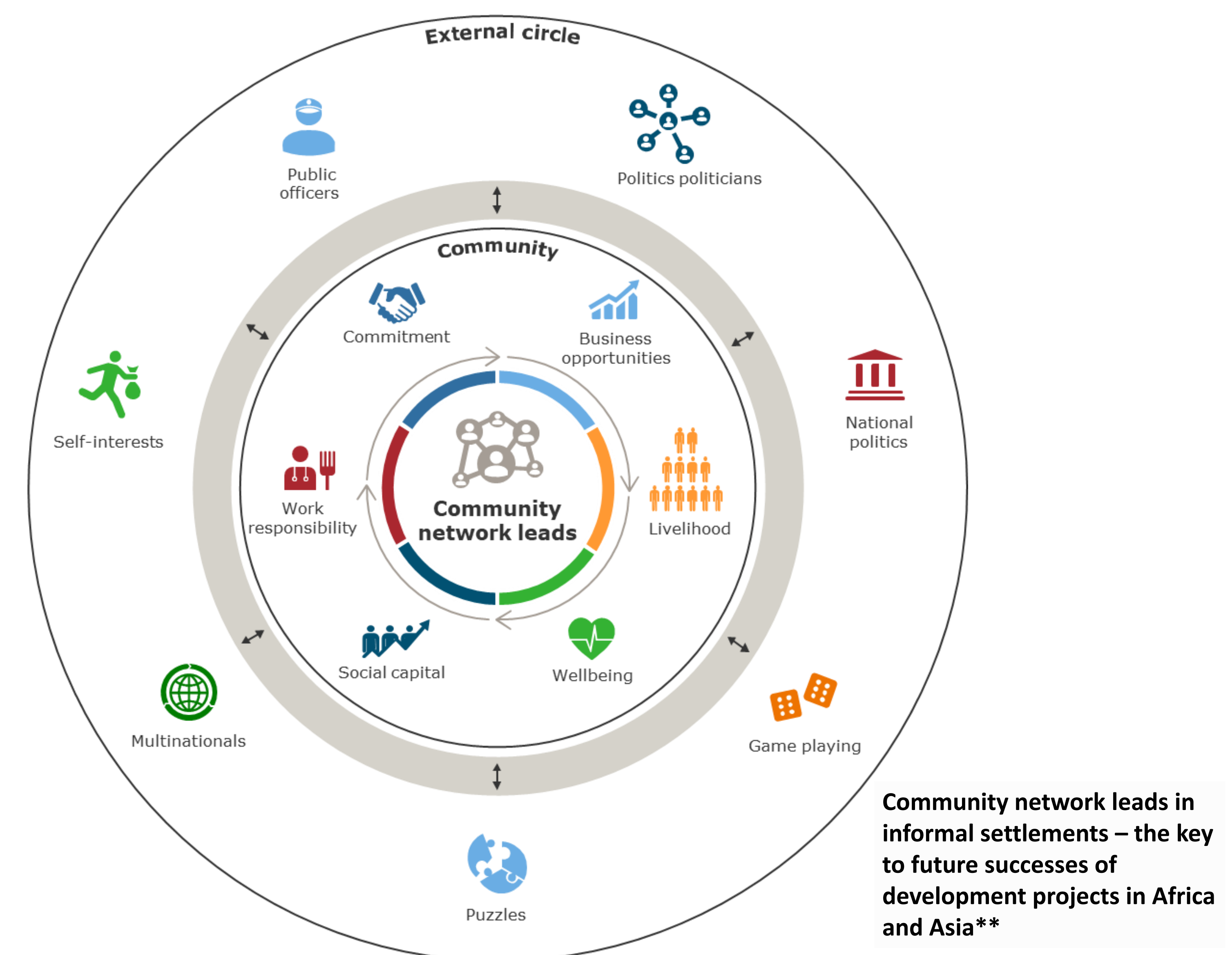


Kibera informal settlement, including fish vendors, community lead and fish outlet established by this project, including three freezers.



### Results, solutions, contribution to transitions

- Successful development of a rural-urban food system approach\*
- Establishment of a new fish value-chain between Nyeri and Kibera\*\*
- Local empowerment has resulted in tremendous impacts, because the local communities have been very motivated to do what they believe are solutions to improve their livelihoods through aquatic food systems\*\*
- Scientific insights in spatial analyses and food use and food waste analyses (a total of 4 surveys conducted)
- Special Issue\*\*\*



### What's next?

- A project is successful if local communities follow up with own initiatives as follow ups of project (here: investments in feed, fingerlings, Recirculation Aquaculture Systems (RAS), processing, new entrepreneurs taking part in the value-chain, etc.)
- Follow up research on the informal settlement to guide and understand how future development investments can be more successful.

### Questions

- How do you take the informal sector and informal structures and settlements into account in your work and research?
- How could we support your work or research?
- Which contributions/relationship would like to make?



Wageningen University & Research  
P.O. Box 123, 6700 AB Wageningen  
Contact: [katrine.soma@wur.nl](mailto:katrine.soma@wur.nl)  
T + 31 (0)317 623259872  
<https://www.wur.nl/en/show/Feeding-cities-migration-1.htm>

### Key publications

\* Van Berkum et al 2019. Urbanisation, migration and food system transformations: Concepts and methodologies for a better understanding of the dynamics of urban food systems and migration settlements [10.18174/524538](https://doi.org/10.18174/524538)  
\*\*Soma et al. 2021. A New Rural-Urban Fish Food System Was Established in Kenya—Learning from Best Practices: <https://www.mdpi.com/2071-1050/13/13/7254>  
\*\*\* Special Issue: Special Issue "Development of Resilient Urban Food Systems—Exploring Synergies and Making Priorities" [https://www.mdpi.com/journal/sustainability/special\\_issues/resilient\\_urban\\_food\\_systems](https://www.mdpi.com/journal/sustainability/special_issues/resilient_urban_food_systems)