

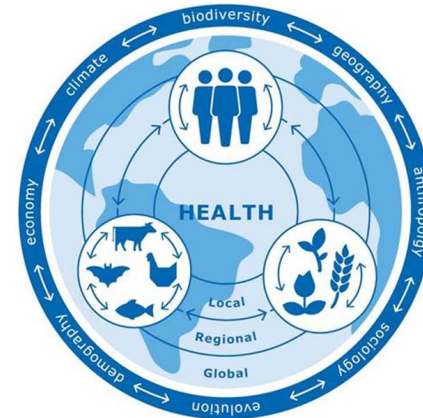
Global One Health Research at Wageningen University and Research

Marcel Zwietering & Wim van der Poel
24 October 2019



Global Health One Health

- One Health: **Diseases in humans, animals and plants** are inherent to life on Earth
- Global Health: *Health and healthy nutrition is related to **urbanisation** and social and economic prosperity, poverty and **inequalities** in different parts of our world*



Global One Health

Sub-themes

1. Health and (Emerging) infectious disease
2. Health and environment (incl. climate change)
3. Health and society (incl. economy)
4. Health and food (incl. food production)

emphasis on multidisciplinary and societal impact;



Global warming



Changing disease vector abundance



Increasing population

Global Change

Increasing travel and transport



Nature encroachment



Intensified animal production



Projects and program

	Title	
1	Optimizing sampling for mycotoxins	small short project
2	Successful implementation of interventions	small short project
3	Endotoxins exposure in broilers	20 min presentation
4	Midge gut microbiome	20 min presentation
5	Risk livestock manure	20 min presentation
6	Socio-economic factors Emerging zoonoses	20 min presentation
7	<i>Sustainable Healthy Food Systems</i>	<i>Pitch</i>
8	<i>Mosquito co-infections in Zika</i>	<i>Pitch</i>
9	<i>Reduction of obesity by targeted nutritional treatment</i>	<i>Pitch</i>
10	<i>Role of wildlife in antimicrobial resistance</i>	<i>Pitch</i>
11	<i>Synergies between human and environmental health</i>	<i>Pitch</i>
12	The Social Nature of Global One Health	Workshop