



KB34-2D-2. Farm and Forestry as Carbon Sinks. Towards a framework for evaluation of technical, management and policy measures, using Living Labs.

Project Team: Irene Bouwma (WENR), Judith Westerink, Sabine de Rooij, Nienke Nuessink, Seerp Wigboldus, Jorike Potters, Geert Woltjer

Background

Living labs are understood as collaborative platforms in which different actors from research, government, business and citizens work together in finding solutions for complex societal challenges. They are increasingly seen as an instrument to support sustainability transitions, such as transitions to a circular bio-based and climate smart society. Living labs can create spaces for joint experimenting and learning by exploring the barriers and possibilities for transition and to co-create viable solutions. These high expectations and the increased interest to work through living labs has sparked a keen interest in methods for assessing performance and effects of living labs.

Project objectives

The objective of the research project is to develop in co-operation with existing living labs an evaluation framework to assess the contribution of living labs to the transition of sustainable and climate neutral farm and forestry practice and how provinces and food chain actors can influence this transition.

Results so far

- Overview of measures in agriculture to mitigate greenhouse gas emissions for discussions in Living Labs
- Development of two 'talk'- infographic for discussion in the living labs on evaluation approaches
- Discussion in three living labs on evaluation of their lab
- Reconnaissance of a living lab on 'building with wood'
- First ingredients of the conceptual framework for a scientific paper

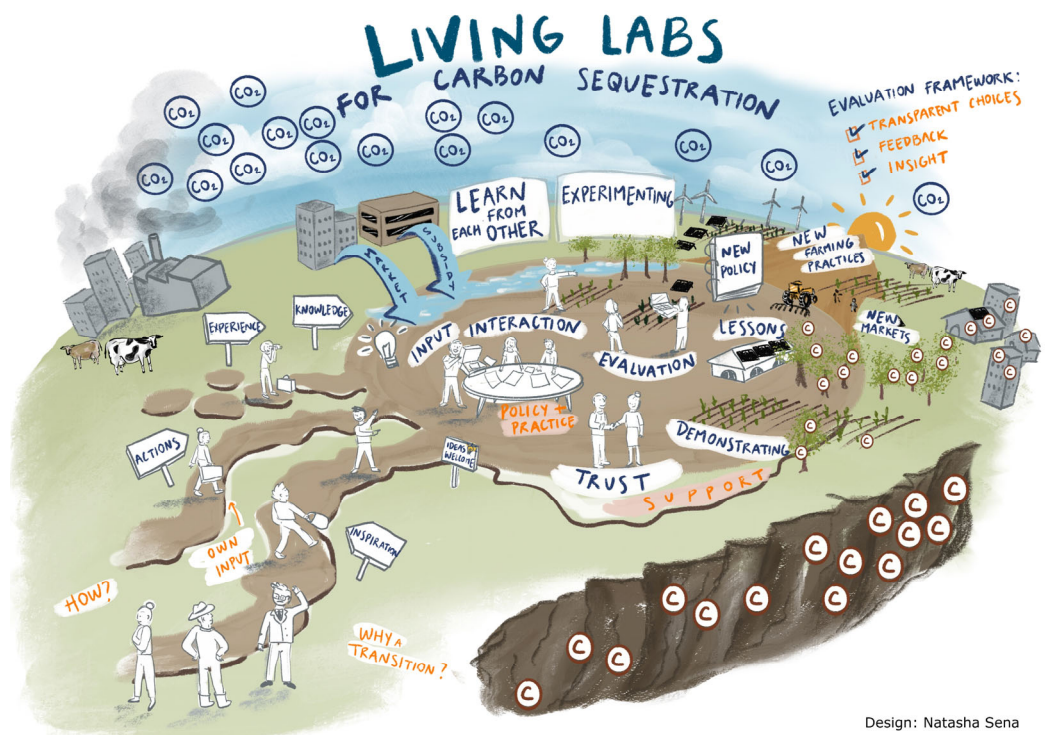
Expected impacts

- The project has led to a proposal to monitor progress and evaluate the Living Lab- Boerderij van de Toekomst
- The project has contributed to the evaluation of the Green Circle Sustainable French Fries
- The framework for monitoring and evaluation can be used by other living labs to monitor and evaluate their activities



Research and outreach plans remaining time

- Presentation of the framework at Circular@Wur conference
- Continued monitoring of the three involved living labs and one newly to be formed living lab
- Two scientific papers
- Presentations and discussions with other living labs on the developed framework



Design: Natasha Sena