

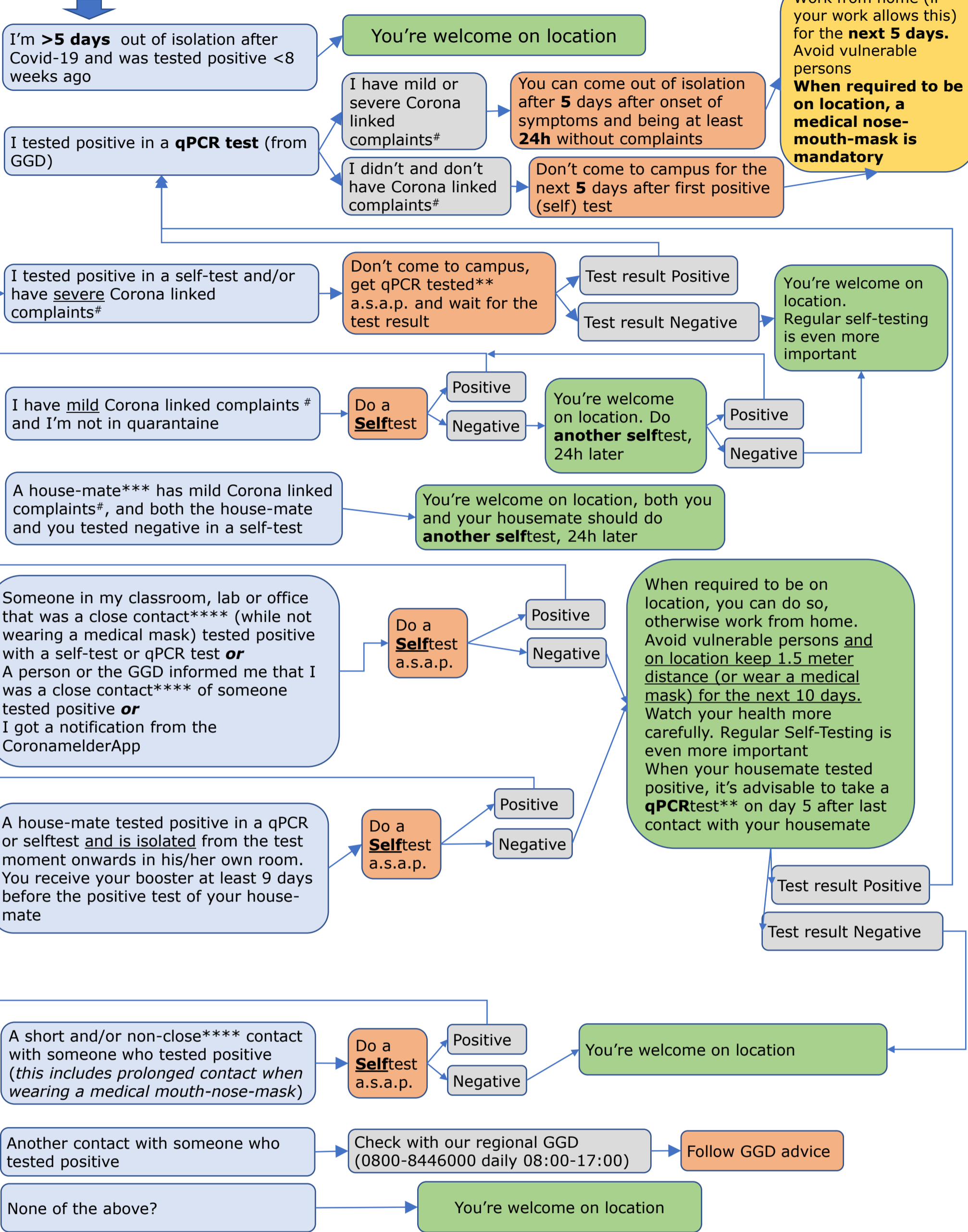


Can I come to a WUR location?

Use this checklist to take your own responsibility and check it every time you want to come to Campus. This checklist applies when you're not considered vulnerable^{##}
The latest version of this checklist is always available at wur.nl/cicwl-staff

I'm fully vaccinated* (including Booster ≥7 d ago)

Check the blue box that applies



Work from home (if your work allows this) for the next 5 days. Avoid vulnerable persons. When required to be on location, a medical nose-mouth-mask is mandatory

When required to be on location, you can do so, otherwise work from home. Avoid vulnerable persons and on location keep 1.5 meter distance (or wear a medical mask) for the next 10 days. Watch your health more carefully. Regular Self-Testing is even more important. When your housemate tested positive, it's advisable to take a qPCRtest** on day 5 after last contact with your housemate

*You're considered fully vaccinated when you finished your Pfizer/Moderna/AstraZeneca/Janssen vaccination series (series might consist of a confirmed infection + 1 vaccination) AND received a booster vaccination (Pfizer/Moderna) more than 7 days ago. This applies equally for a full vaccination series +booster with another WHO EULPQ approved vaccine.
 **GGD test facility in Wageningen at Agro Business Park 99-101, walk in hours (that is, without appointment) 9:00-16:30. Alternatively you can make an appointment via Coronatest.nl or 0800-1202.
 ***A house-mate is a person with whom you're sharing facilities such as kitchen and/or bathroom and/or living room. Sharing only a walkway/corridor doesn't make you house-mates.
 ****Close contact is >15 minutes within 24h at <1.5m distance, or when kissing or hugging some-one (irrespective of duration). When you've properly worn a medical mouth-nose-mask (ii/iir/ffp2) during that contact, you're not considered a close contact.
 #Severe Corona linked complaints are fever and/or shortness of breath and/or sudden loss of taste/smell. Mild Corona linked complaints are: cold symptoms such as nasal cold, runny nose, sneezing, sore throat that are not directly linked to a known condition (e.g. hay-fever).
 ##Vulnerable are persons defined at rivm.nl (in dutch) that include a.o. persons >70y, having severe chronic lung or cardiovascular disease, non-adjusted diabetes or are morbid obese (BMI>40). In these cases indicated self-tests should be replaced by PCR tests.
 Note: -When the GGD (Municipal Health Service) contacts you, they might give you a personal advise that deviates from the one given here, in that case follow their advice.
 -For specific questions on this chart, you can email info.corona@wur.nl

Rules at Wageningen University & Research locations

Stick to the WUR Corona Protocol
Find the most current protocol on the WUR website Do you see someone around you with symptoms? Then address him or her kindly.



A (medical) nose-mouth mask can be worn, available at reception desks



Wash or disinfect hands often



Sneeze and cough in elbow



Keep 1.5m distance where possible



Keep a stock of selftests, to test when having (minor) complaints. Order them at Zelftestonderwijs.nl

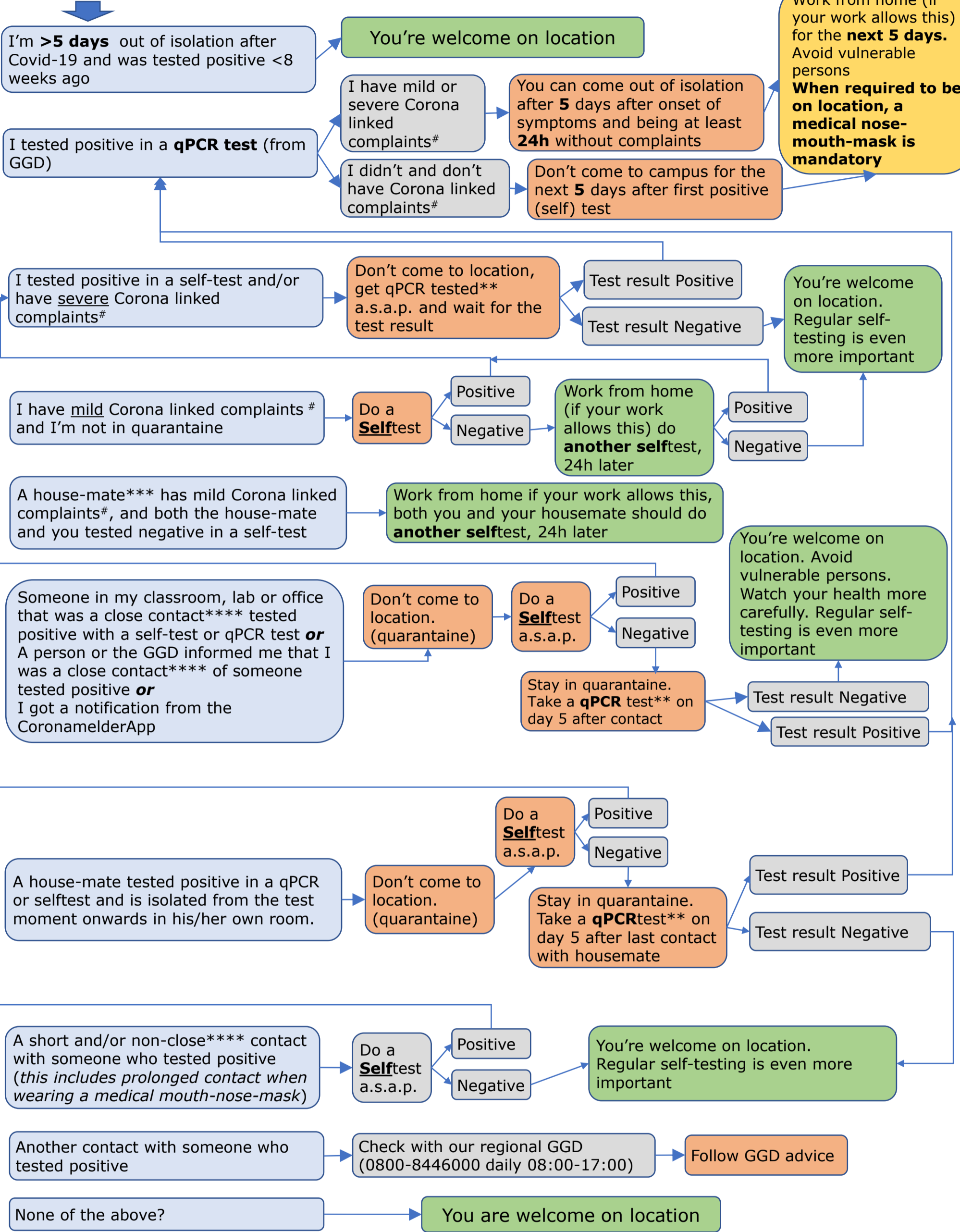


Can I come to a WUR location?

Use this checklist to take your own responsibility and check it every time you want to come to Campus. This checklist applies when you're not considered vulnerable^{##}
The latest version of this checklist is always available at wur.nl/cicwl-staff

I'm NOT fully vaccinated* (incl. booster <7 days ago)

Check the blue box that applies



*You're considered fully vaccinated when you finished your Pfizer/Moderna/AstraZeneca/Janssen vaccination series (series might consist of a confirmed infection + 1 vaccination) AND received a booster vaccination (Pfizer/Moderna) more than 7 days ago. This applies equally for a full vaccination series + booster with another WHO EULPQ approved vaccine.

**GGD test facility in Wageningen at Agro Business Park 99-101, walk in hours (that is, without appointment) 9:00-16:30. Alternatively you can make an appointment via Coronatest.nl or 0800-1202.

***A house-mate is a person with whom you're sharing facilities such as kitchen and/or bathroom and/or living room.

Sharing only a walkway/corridor doesn't make you house-mates.

****Close contact is >15 minutes within 24h at <1.5m distance, or when kissing or hugging some-one (irrespective of duration). When you've properly worn a medical mouth-nose-mask (ii/iir/ffp2) during that contact, you're not considered a close contact.

#Severe Corona linked complaints are fever and/or shortness of breath and/or sudden loss of taste/smell. Mild Corona linked complaints are: cold symptoms such as nasal cold, runny nose, sneezing, sore throat that are not directly linked to a known condition (e.g. hay-fever).

##Vulnerable are persons defined at rivm.nl (in dutch) that include a.o. persons >70y, having severe chronic lung or cardiovascular disease, non-adjusted diabetes or are morbid obese (BMI>40). In these cases indicated self-tests should be replaced by PCR tests.

Note: -When the GGD (Municipal Health Service) contacts you, they might give you a personal advise that deviates from the one given here, in that case follow their advice.

-For specific questions on this chart, you can email info.corona@wur.nl

Rules at Wageningen University & Research locations

Stick to the WUR Corona Protocol
Find the most current protocol on the [WUR website](http://wur.nl) Do you see someone around you with symptoms? Then address him or her kindly.



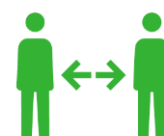
A (medical) nose-mouth mask can be worn, available at reception desks



Wash or disinfect hands often



Sneeze and cough in elbow



Keep 1.5m distance where possible



Keep a stock of selftests, to test when having (minor) complaints. Order them at Zelftestonderwijs.nl