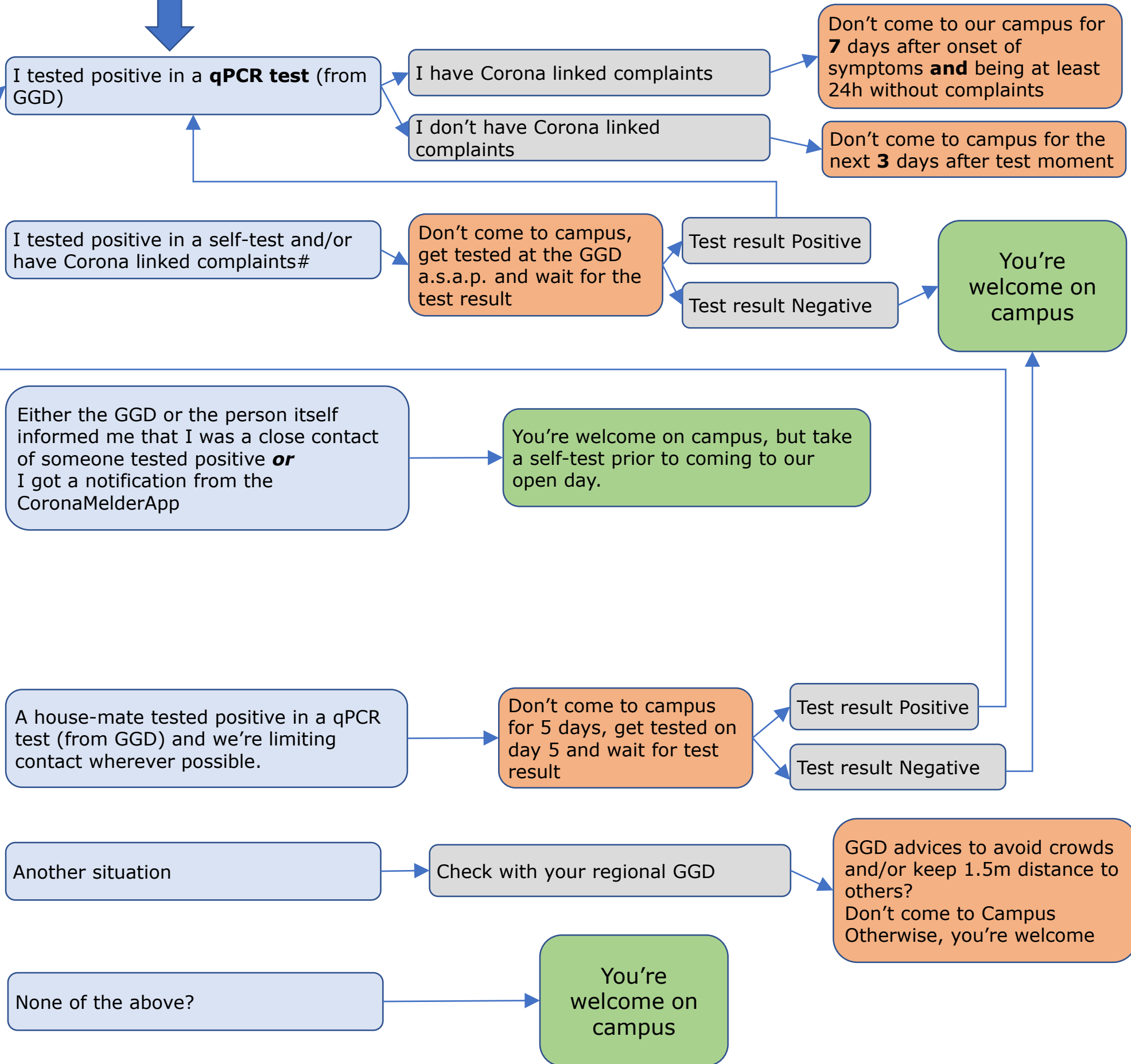




Can I come to the Open Day?

I'm Protected* (not protected? see next page)

Check the blue box that applies



*You're considered protected when you finished your Pfizer/Moderna/AstraZeneca vaccination series more than 2 weeks ago, your Janssen vaccination more than 4 weeks ago, went through a confirmed Covid19 infection less than 6 month ago, or are protected with another WHO EULPQ approved vaccine.
 #Corona linked complaints are: sudden loss of taste/smell and/or fever and/or shortness of breath and/or cold symptoms such as nasal cold, runny nose, sneezing, sore throat that are not directly linked to a known condition (e.g. hay-fever)
 °Close contact: at least 15 minutes contact <1.5m cumulative within 24h or when you had a major risk for infection e.g. hugging or kissing

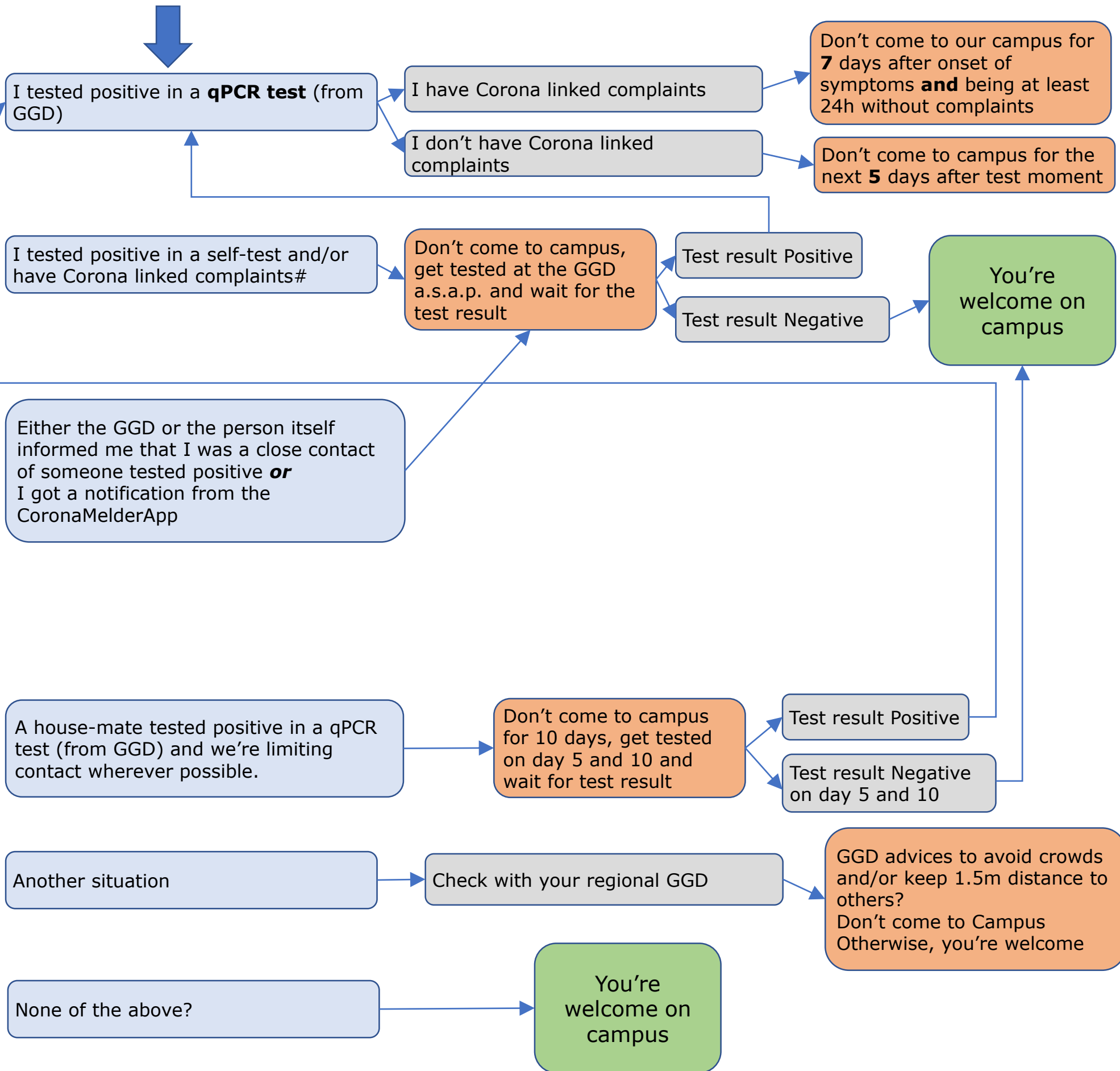
Rules at the open day of Wageningen University

- Wear nose-mouth mask where indicated
- Follow indicated routes
- Wash or disinfect hands
- Sneeze and cough in elbow
- Wherever possible keep your distance
- Self-test is advised prior to coming to campus



Can I come to Campus?

I'm Not Protected* (protected? see previous page)



*You're considered protected when you finished your Pfizer/Moderna/AstraZeneca vaccination series more than 2 weeks ago, your Janssen vaccination more than 4 weeks ago, went through a confirmed Covid19 infection less than 6 month ago, or are protected with another WHO EULPQ approved vaccine.
 #Corona linked complaints are: sudden loss of taste/smell and/or fever and/or shortness of breath and/or cold symptoms such as nasal cold, runny nose, sneezing, sore throat that are not directly linked to a known condition (e.g. hay-fever)
 °Close contact: at least 15 minutes contact <1.5m cumulative within 24h or when you had a major risk for infection e.g. hugging or kissing

Rules at the open day of Wageningen University

- Wear nose-mouth mask where indicated
- Follow indicated routes
- Wash or disinfect hands
- Sneeze and cough in elbow
- Wherever possible keep your distance
- Self-test is advised prior to coming to campus