

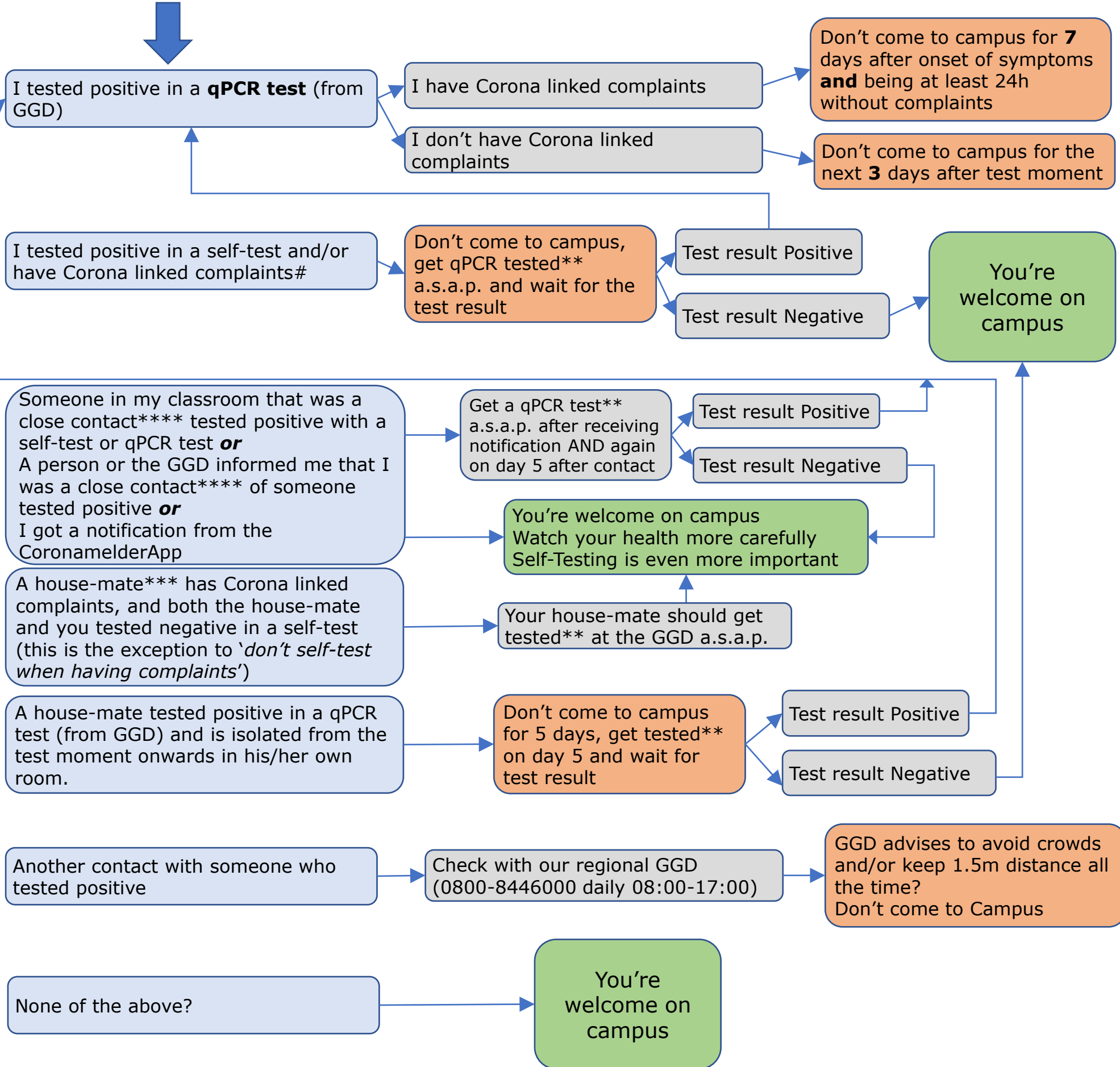


Can I come to Campus?

Use this checklist to take your own responsibility to avoid a lockdown on Wageningen campus. Check it every time you want to come to campus.

I'm Protected* (not protected? see next page)

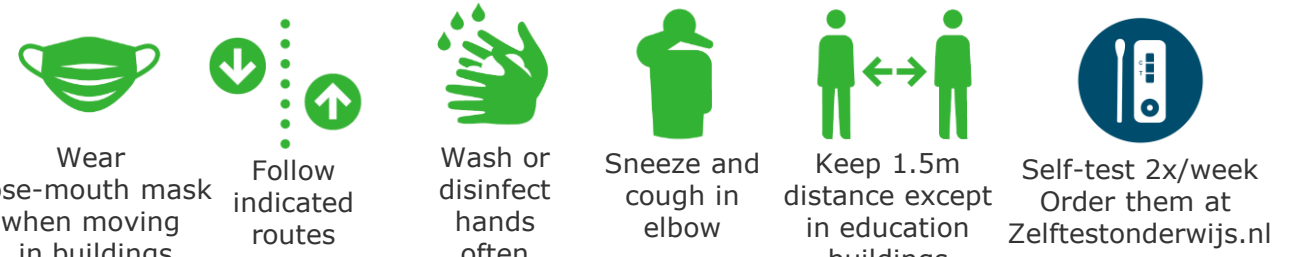
Check the blue box that applies



*You're considered protected when you finished your Pfizer/Moderna/AstraZeneca vaccination series more than 2 weeks ago, your Janssen vaccination more than 4 weeks ago, went through a confirmed Covid19 infection less than 6 month ago, or are protected with another WHO EULPQ approved vaccine.
 **GGD test facility in Wageningen at Agro Business Park 99-101, walk in 9:00-10:15, 10:45-12:00, 13:00-14:15 and 14:45-16:30, or by appointment via Coronatest.nl or 0800-1202.
 ***A house-mate is a person with whom you're sharing facilities such as kitchen and/or bathroom and/or living room. Sharing only a walkway/corridor doesn't make you house-mates.
 ****Close contact is >15 minutes within 24h at <1.5m distance, or when kissing or hugging some-one (irrespective of duration)
 #Corona linked complaints are: sudden loss of taste/smell and/or fever and/or shortness of breath and/or cold symptoms such as nasal cold, runny nose, sneezing, sore throat that are not directly linked to a known condition (e.g. hay-fever)
Note: When the GGD (Municipal Health Service) contacts you, they might give you a personal advise that deviates from the one given here, in that case follow their advice.

Rules at Wageningen University & Research locations

Stick to the WUR Corona Protocol
Find the most current protocol on the [WUR website](#) Do you see someone around you with symptoms or who does not comply with the protocol? Then address him or her kindly.

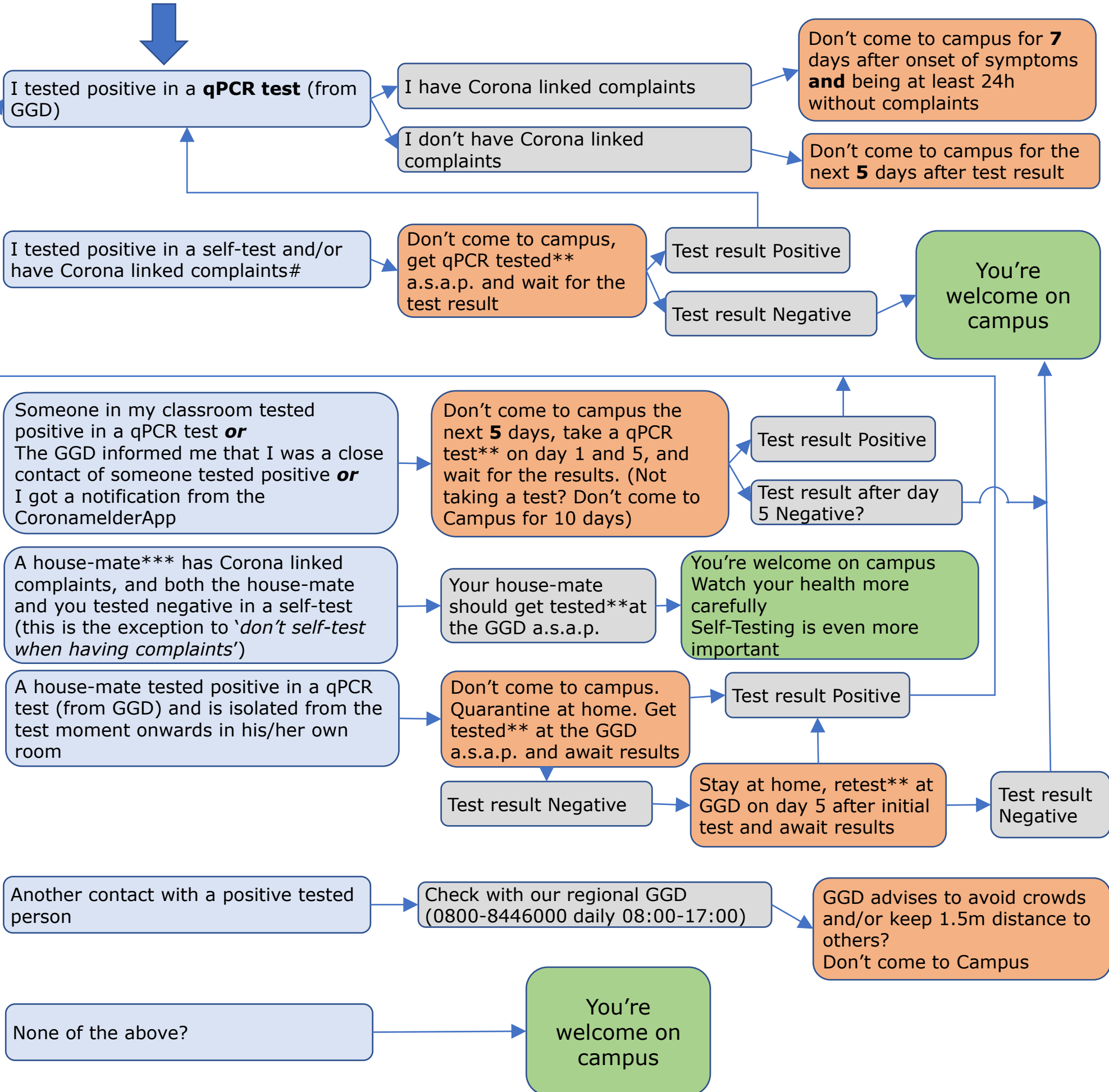




Can I come to Campus?

I'm Not Protected* (protected? see previous page)

Check the blue box that applies



*You're considered protected when you finished your Pfizer/Moderna/AstraZeneca vaccination series more than 2 weeks ago, your Janssen vaccination more than 4 weeks ago, went through a confirmed Covid19 infection less than 6 month ago, or are protected with another WHO EULPQ approved vaccine.
 **GGD test facility in Wageningen at Agro Business Park 99-101, walk in 9:00-10:15, 10:45-12:00, 13:00-14:15 and 14:45-16:30, or by appointment via Coronatest.nl or 0800-1202.
 ***A house-mate is a person with whom you're sharing facilities such as kitchen and/or bathroom and/or living room. Sharing only a walkway/corridor doesn't make you house-mates.
 ****Close contact is >15 minutes within 24h at <1.5m distance, or when kissing or hugging some-one (irrespective of duration)
 #Corona linked complaints are: sudden loss of taste/smell and/or fever and/or shortness of breath and/or cold symptoms such as nasal cold, runny nose, sneezing, sore throat that are not directly linked to a known condition (e.g. hay-fever)
Note: When the GGD (Municipal Health Service) contacts you, they might give you a personal advise that deviates from the one given here, in that case follow their advice.

Rules at Wageningen University & Research locations

Stick to the WUR Corona Protocol
 Find the most current protocol on the [WUR website](#) Do you see someone around you with symptoms or who does not comply with the protocol? Then address him or her kindly.

