



Oregon State
University



YOUR COMMUNITY YOUR FUTURE

GUIDE FOR INTERNATIONAL STUDENTS | 2021-2022





INTO OR

START AT OREGON STATE UNIVERSITY

TOP 1.4%

GLOBAL UNIVERSITY
Center for World University Rankings 2020

TOP 15%

BEST PAID GRADUATES IN THE US
PayScale College Salary Report 2019

#1

SAFEST COLLEGE CAMPUS IN THE US
ADT News and Resources 2018

#1

BEST CITY TO LIVE IN OREGON
Chamber of Commerce 2019

#82

BEST PUBLIC UNIVERSITY
Times Higher Education 2020

#41

TOP RESEARCH UNIVERSITY
Best College Reviews 2020

450+

COMPANIES RECRUITING STUDENTS FROM OREGON STATE UNIVERSITY
University Data 2020

TIER 1

HIGHEST RESEARCH ACTIVITY
Carnegie Classification of Institutions of Higher Education



TOP PROGRAMS



UNDERGRADUATE

#1 NATURAL RESOURCE MANAGEMENT
College Factual 2020

1% MOST POPULAR COMPUTER SCIENCE PROGRAM IN THE US
College Factual 2020

#24 AGRICULTURAL SCIENCES
QS World University Rankings 2020

#37 EARTH AND MARINE SCIENCES
QS World University Rankings 2020

#63 ENGINEERING
U.S. News & World Report 2021

#71 COMPUTER SCIENCE
U.S. News & World Report 2021

#116 BUSINESS
U.S. News & World Report 2021

GRADUATE

#5 HUMAN DEVELOPMENT AND FAMILY STUDIES
College Factual 2020

#7 ROBOTICS
Analytics Insight 2019

#18 SUPPLY CHAIN AND LOGISTICS MANAGEMENT
College Choice 2018

#21 BIOLOGICAL/AGRICULTURAL ENGINEERING
U.S. News & World Report 2020

#42 ENVIRONMENTAL ENGINEERING
U.S. News & World Report 2020

#43 CIVIL ENGINEERING
U.S. News & World Report 2020

#49 INDUSTRIAL ENGINEERING
U.S. News & World Report 2020

#58 ELECTRICAL ENGINEERING
U.S. News & World Report 2020

#68 COMPUTER SCIENCE
U.S. News & World Report 2020

AT A GLANCE

Founded: 1868

Campus: Corvallis, OREGON

City Population: 56,000

Campus Size: 400 acres

Enrollment: 31,719

International Students: 3,492

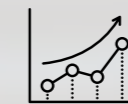
Countries Represented: 112

Bachelor's: 200+

Master's/PhD: 80+

Additional Campus: Bend, OREGON

EMPLOYABILITY



\$20,000
HIGHER AVERAGE SALARY

for OSU bachelor's graduates compared to national average 10 years after graduation.

US Department of Education / Department of Treasury 2019

OSU'S GRADUATES have gained employment with:

Adidas	Dell Inc.	Nvidia
Amazon	Deloitte	Pixar
Apple	Google	SpaceX
Boeing	HP	Tesla
Coach	Intel	
Columbia Sportswear	Nike	

"The best thing I experienced at Oregon State University, that I am able to apply in my work, was the practical knowledge and exposure to projects earlier in my studies. The very first term at Oregon State University, I studied a subject called design for safety, and in that very first course, I was introduced into a lot of practical knowledge."

Coming to a new country and learning the new construction methods in that course was a really great exposure for me. This helps me a lot to make [safety] observations, to determine what kind of work is good, safe and productive."



Amit, India
MEng in Civil Engineering, Class of 2019
Field Engineer at Turner Construction, Salem, OR

RESEARCH

\$441M
IN RESEARCH FUNDING

University Data 2019

LAND, SEA, SPACE AND SUN GRANT

As a leader in climate change research, OSU is one of only two (alongside Penn State) US universities to have Land, Sea, Space and Sun Grant designations. This means OSU is involved with research in all four areas.





Haiyi, China
BS Finance and Accounting,
Class of 2019
Audit & Assurance at Deloitte,
Portland, OR



Akshay, India
MEng in Civil Engineering,
Class of 2019
Civil Engineer for Lewis & Van
Vleet, Inc. Portland, OR



Ananiya, Ethiopia
BS in BioResource Research,
Class of 2018
PhD Candidate in
Pharmaceutical Sciences,
Class of 2023
Undergraduate Research
Assistant at Dr. Taifo
Mahmud's Lab
in the College of Pharmacy
Oregon State University,
Corvallis, OR



BUILD YOUR FUTURE ON THE WEST COAST

OSU Students work all over the US and the world. See what you can do on the West Coast.

THE INTO OSU ADVANTAGE

INTO OSU is one of the oldest and most integrated Pathway programs in the US. OSU's commitment to international education is evident in the purpose-built five-story International Living-Learning Center. The center is a vibrant global hub of student life and educational activity which also houses the INTO OSU Center.

INTO OSU provides services such as:

- Personalized academic, language and cultural support
- Targeted tutoring and self-study learning support resources
- Your own academic success and personal advisor
- Comprehensive orientation with free airport pickup
- English Conversation Partner Program
- Social events and trips around Oregon
- 150 INTO OSU and OSU staff and teachers to support students



INTO OSU SUCCESS

85% OF ALL PATHWAY STUDENTS WERE ELIGIBLE TO PROGRESS AT OSU IN 2018-19.

Eligible students are those who successfully completed the Pathway program and qualified for admission as degree-seeking students. Enrolled students are those who enrolled as degree-seeking students in their next term of degree study at Oregon State University.

Undergraduate and Graduate Progression Rate 2018-2019

85%
ELIGIBLE STUDENTS

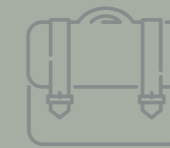
98.1%
OF ELIGIBLE STUDENTS
ENROLLED

SUCCEED IN INNOVATION NATION

#10

BEST COLLEGE TOWN
IN AMERICA

Best College Review 2019



581 STUDENTS

PARTICIPATING IN OPT OR CPT IN 2019

University Data 2019



400+
STUDENT CLUBS



#33

MOST INNOVATIVE
SCHOOL IN THE US

U.S. News & World Report 2019



Anand, India

BS in Computer Science, Class of 2016
Test Engineer at HP, San Diego, CA



#3

OCEANOGRAPHY PROGRAM
in the World

Shanghai Rankings 2018

5th

BEST ONLINE
BACHELOR
PROGRAM IN THE US

U.S. News & World Report 2019



#10

BEST BIG DATA
degree in the US

College Choice 2018

#4

TOP PRODUCING US
UNIVERSITY FOR
FULBRIGHT
SCHOLARS

Fulbright U.S. Scholar Program 2020



#37

IN EARTH SCIENCES

QS World University Rankings 2019



LIVING IN OREGON

Expand Your Horizons in Corvallis

- Free public transportation
- 45 minutes to the Pacific Ocean
- 90 minutes to Portland
- 5 minutes to HP Research Campus

Experience Oregon

- No sales tax
- Silicon Forest: home to high-tech companies
- Nike Headquarters in Beaverton, OR
- National Basketball Association: Portland Trail Blazers
- Major League Soccer: Timbers
- Outdoor recreation

Explore the OSU-Cascades Campus

- OSU Campus located in Bend, OR
- 16 students per class on average
- 1,259 students on campus
- 300 days of sunshine
- 30+ degrees, minors and options, including two campus-specific majors
- Computer Science with option to specialize in web and mobile software development
- 100% job placement for Computer Science graduates
- Specialized internship opportunities in Energy Systems Engineering, Hospitality and Computer Science

HOUSING AND DINING

Living in the heart of Beaver Nation

Living on campus places you steps away from all the resources you need to succeed in your first year and beyond. You'll have the most convenient access to your classes, the library, dining halls and the recreation center, while living among American students in a diverse and welcoming community.

Living-Learning Communities

Living-Learning Communities (LLCs) are academic programs that partner with residential communities on campus. In addition to living among students in the same major, college, academic focus or program, we hold events in your community that are related to your area of interest. Living in an LLC is a great way to create strong connections with other students and to build relationships with faculty and advisers in your program.

Living On Campus

Program	REQUIRED	NOT REQUIRED
Academic English (AE)		●
International Year One (IYO) / AE + IYO	●*	
International Direct (ID) / AE + ID	●*	
Undergraduate Transfer Program (UTP) / AE + UTP	●*	
Master's International Direct (MID)		●
Graduate Pathway (GPW) / AE + GPW		●

*Students more than one year past high school graduation are not required to live on campus.

Bedroom Types

Single Room

1 student per bedroom



Double Room

2 students per bedroom



Triple Room

3 students per bedroom



Bathroom Types

Private

Bathroom for 1 bedroom (1-2 people)



Suite-style

Bathroom for 2-3 bedrooms (2-6 people)



Shared

Bathroom for multiple bedrooms



Note: The floor plans and bathroom types may vary.

LEARN MORE ABOUT OUR HOUSING OPTIONS:
www.intostudy.com/osu/housing



MEAL PLANS: All on-campus housing options include a meal plan.

Live-on Requirement: All first-year undergraduate students who enroll at OSU within one year of high school graduation must live on campus. Students more than one year past high school graduation are not required to live on campus.

For more information on this policy, including available exemptions, visit studentlife.oregonstate.edu/first-year-experience-live-policy

Students not required to live on campus may choose to do so, but should carefully review contract length and cancellation policies.

RESEARCH EXCELLENCE

For more than 150 years, students, alumni and faculty have made outstanding achievements including developing the artificial heart valve, TRIGA Reactor and wristband samplers that detect environmental chemicals.

GLUCOSE-SENSING CONTACT LENSES

The contact lens is a hypothetical application of a transparent sensor developed at OSU. The goal is to expand contact lens sensors to a range of tear fluid biomarkers, which can be used to identify a range of ocular disorders (dry eye disease, diabetic retinopathy, glaucoma, etc.), cancers (colon, prostate, breast, lung, etc.), multiple sclerosis and many other diseases.



ROBOTIC MOBILITY

Imagine if robots had legs and could walk on the same terrain as people. Agility Robotics, a company first developed at OSU, is making robotic mobility a reality. Advanced mobility could change the future by enabling shipping to be more automated and opening up new possibilities in manufacturing and production.



INNOVATION NATION

First year business students and their business teammates get to run their own micro business with real money, real profits, real goods and services. Through this interactive experience, you will gain competitive skills, giving you an edge when applying to internships and jobs after graduation.



HANDS-ON BUSINESS RESEARCH

The College of Business Research Suite is outfitted with cutting-edge technology, space and design to conduct innovative research in business, market trends and consumer insights. Apply your research through entrepreneurship programs and access the C2C Marketing Lab. Students can also participate in the Advantage Accelerator, a unique program designed to assist startups in all stages of their growth. You will work directly with innovators and entrepreneurs to explore markets, develop products and obtain customers.

FACULTY SPOTLIGHT: YEONGJIN JANG

Yeongjin is an Assistant Professor of computer science in the Oregon State University College of Engineering's School of Electrical Engineering and Computer Science. His research focuses on computer systems security, especially for identifying and analyzing emerging attacks to computer systems for building more secure systems. In addition to his academic work, he participates in cybersecurity capture the flag (CTF) contests. He received the Black Badge award from DEFCON, as the winner (team DEFKOR) of DEFCON 23 CTF (2015) and the winner (team DEFKOR00t) of DEFCON 26 CTF (2018). He was also one of the finalists (team Disekt) at the DARPA Cyber Grand Challenge final event in 2016.



Photo by Johanna Carson, College of Engineering

YOUR CAREER STARTS HERE

It pays to be an OSU graduate. OSU alumni who graduated with a bachelor's degree are in the top 15% best paid graduates in the US. *PayScale College Salary Report 2019*

GET READY FOR YOUR FUTURE

The top three attributes employers are seeking from recent graduates are*:

1. Communication skills (written)
2. Problem-solving skills
3. Ability to work in a team

Gain these soft skills in all 170 majors, including public health, business and computer science.

INTERNSHIPS DRIVEN BY INDUSTRY

OSU offers several support services to find internship placements, including MECOP which is unique to Oregon. With over 130 different companies participating in the program, MECOP places students in paid internships in the fields of engineering, tech and business with top companies like Boeing, Intel, HP and Oracle.

JOBS ON CAMPUS

There are many opportunities for OSU students with a minimum of 5,000 jobs available daily on the career center portal. International students are eligible to work on campus for up to 20 hours a week, earning an estimated \$8,100 to help offset your educational costs.

*National Association of Colleges and Employers 2019

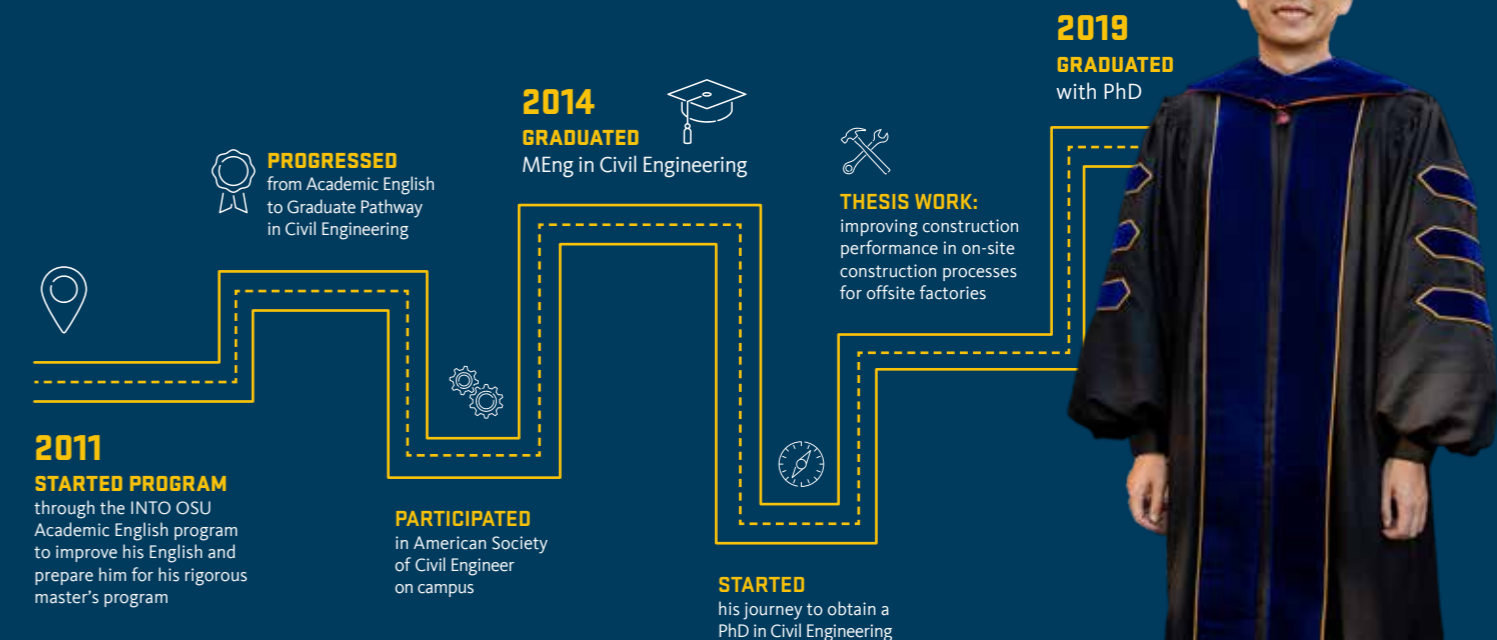


STUDENT JOURNEY

Ding, China

MEng in Civil Engineering, Class of 2014 | PhD in Civil Engineering, Class of 2019

"I got several offers from universities as a faculty position. I haven't decided which one to choose, but I will definitely be a faculty member at a university back home in China."



ACADEMIC PROGRAMS

FIND YOUR DEGREE. With a wide range of subject areas and admissions options, you can find the perfect degree for your chosen career. You can choose to apply for direct entry to the university or for a Pathway program that provides extra academic, language and cultural support. From the day you apply to the day you graduate, we are here to help you succeed every step of the way. Flip to the back cover to learn how to apply.

B = Bachelor's **M = Master's** **D = Doctorate** ■ Indicates degree programs also available at OSU-Cascades ● Indicates an OSU degree program is available

GP Indicates a Graduate Pathway program can lead to this degree. This degree is available through direct admission. ▶ Designated STEM degree by the U.S. Department of Homeland Security

MID Master's International Direct provides customized support to direct entry students.

International Year One

Indicates the undergraduate Pathway program that should be taken to progress to an undergraduate academic program. This program is also available through direct admission.

AP All Undergraduate Pathways	EN Engineering	FO Forestry	PP Public Policy
BU Business	ES Exercise and Sport Science	GE General	PS Psychology
CS Computer Science	EV Environmental Economics and Policy	MA Mathematics	SC Science
DA Design, Apparel and Merchandising Management	FS Food Science and Technology	NR Natural Resources and Renewable Materials	WG Women and Gender Studies

Direct Routes

INTERNATIONAL DIRECT

All direct undergraduate degrees have customized support and enhanced student experience for first year success.
→ For more information see pages 12-15

MASTER'S INTERNATIONAL DIRECT

Programs with the MID route have enhanced first-term support.
→ For full listings and more information, see page 17

	B	M	D
College of Agricultural Sciences			
Agricultural and Food Business Management	SC		
Agricultural Education		●	
Agricultural Sciences	SC		
▶ Animal Science(s) [BS options: Animal Behavior, Animal BioHealth/Pre-Professional, Animal Production, Equine, Rangeland Science]	SC	●	●
Applied Economics		GP	●
Biological Data Sciences [BS options: Computational Biology; Ecological and Environmental Informatics; Genomics]	SC		
▶ Bioresource Research [BS options: Animal Reproduction and Development; Applied Genetics; Bioproducts and Bioenergy; Biotechnology; Climate and Biosystems Modeling; Environmental Chemistry; Food Quality; Genomics/Bioinformatics; Pest Biology and Management; Plant Growth and Development; Sustainable Ecosystems; Toxicology; Water Resources]	SC		
▶ Botany [BS options: Comprehensive Botany; Customizable; Ecology, Evolution, and Conservation; Molecular, Cellular, and Genomic Botany; Plant Pathology]	SC		
▶ Botany and Plant Pathology		●	●
▶ Crop and Soil Science [BS Options: Agronomy; Plant Breeding and Genetics; Soil Science]	SC		
▶ Crop Science [MS, PhD options: Entomology; Plant Breeding and Genetics]		●	●
▶ Entomology		●	●
Environmental Economics and Policy	EV		
Fisheries and Wildlife Administration		●	
▶ Fisheries and Wildlife Sciences	SC		
Fisheries Sciences		●	●
▶ Food Science and Technology [BS options: Enology and Viticulture; Fermentation Science; Food Science]	FS	●	●
▶ Horticulture [BS options: Ecological Management of Turf, Landscape and Urban Horticulture; General Horticulture; Horticultural Research; Plant Breeding and Genetics; Sustainable Horticultural Production; Therapeutic Horticulture; Viticulture and Enology] [MS, PhD options: Entomology; Plant Breeding and Genetics]	NR	●	●
▶ Rangeland Ecology and Management		●	●
▶ Rangeland Sciences [BS options: Habitat Management; Pastoral Systems of the World; Sustainable Livestock Ranching; Sustainable Rangeland Ecosystem Stewardship]	NR		
▶ Soil Science		●	●
▶ Sustainability	SC		

	B	M	D
▶ Toxicology		●	●
▶ Wildlife Science		●	●
College of Business			
Accountancy [BS options: Accounting Information Systems; International Business]	BU	●	
Apparel Design	DA		
▶ Business [MSB options: Finance; Financial Analytics; Marketing Insights and Analytics; Supply Chain Analytics]		GP	MID
Business Administration/MBA [BA, BS options: Digital Marketing, Entrepreneurship for Business Majors; Family Business; General Business (also at OSU-Cascades); Hospitality Management (also at OSU-Cascades); International Business (also at OSU-Cascades); Marketing; Merchandising Management; Retail Management; Supply Chain and Logistics Management] [MBA, PhD options: Accounting (PhD only); Business Analytics; Corporate Finance; Human Resource Management; Innovation Management; Marketing; Organizational Leadership; Research Thesis; Strategy, Entrepreneurship, and Innovation (PhD only); Supply Chain and Logistics Management]	BU	GP	●
Business Information Systems [BA, BS option: International Business]	BU		
Design and Innovation Management	DA		
Finance [BA, BS option: International Business]	BU		
Hospitality Management (OSU-Cascades Only)	BU		
Innovation Management	BU		
Interior Design	DA		
Management [BA, BS option: International Business]	BU		
Marketing [BA, BS option: International Business]	BU		
College of Earth, Ocean and Atmospheric Sciences			
▶ Earth Sciences [BS options: Climate Science, Geology, Ocean Science]	SC		
▶ Environmental Sciences [BS options: Alternative Energy; Applied Ecology; Aquatic Biology; Chemistry and the Environment; Conservation, Resources, and Sustainability; Earth Systems; Environmental Agriculture; Environmental Policy and Economics; Environmental Science Education; Environmental Water Resources]	SC		
▶ Geography		●	●
Geography and Geospatial Science	SC		
Geology		●	●
▶ Marine Resource Management		●	
▶ Ocean, Earth and Atmospheric Sciences		●	●
College of Education			
Adult and Higher Education [EdD, PhD options: Community College Leadership; Leadership in Higher Education]			●
Counseling [MCOun options: Clinical Mental Health Counseling (OSU-Cascades only); School Counseling (OSU-Cascades only)]		●	●
Education [BA, BS options: Advanced Mathematics Teaching; Biology Teaching; Chemistry Teaching; Elementary Teaching; Family and Consumer Sciences Teaching; Foundational Mathematics; Health Teaching; Integrated Science Teaching; Language Arts Teaching; Social Studies Teaching] [MS options: Mathematics Education; Science Education] [EdM options: Advanced Science and Mathematics Education; Free-Choice Learning; PK-12 English to Speakers of Other Languages (ESOL); Social Justice] [PhD options: Agricultural Education; Language Equity and Education Policy; Science/Mathematics Education]	GE	●	●
Elementary Education (OSU-Cascades Only)	GE		
Teaching (MAT) [MAT options: Elementary (OSU-Cascades only); Language Arts (OSU-Cascades only); Mathematics (OSU-Cascades only); Music; Science (OSU-Cascades only); Social Studies (OSU-Cascades only)]		●	

	B	M	D
College of Engineering			
▶ Architectural Engineering	EN		
▶ Bioengineering	EN	GP	MID
▶ Biological and Ecological Engineering		●	●
▶ Chemical Engineering	EN	GP	MID
▶ Civil Engineering	EN	GP	MID
▶ Computer Science [BA, BS options: Applied Computer Science; Computer Systems]	CS	GP	MID
▶ Construction and Engineering Management	EN		
▶ Ecological Engineering	EN		
▶ Electrical and Computer Engineering	EN	GP	MID
▶ Energy Systems Engineering (OSU-Cascades Only)	EN		
Engineering Science (OSU-Cascades Only)	EN		
▶ Environmental Engineering	EN	GP	MID
▶ Industrial Engineering [BS options: Business Engineering] [Graduate options: Advanced Manufacturing, Engineering Management, Human Systems Engineering, Informational Systems Engineering, Manufacturing Systems Engineering]	EN	GP	MID
▶ Manufacturing Engineering [BS options: Manufacturing Systems; Product Development]	EN		
▶ Materials Science		●	●
▶ Mechanical Engineering [Grad options: Advanced Manufacturing; Design; Dynamics and Controls; Robotic; Engineering Management; Materials Mechanics; Renewable Energy; Robotics and Thermal Fluid Sciences]	EN	GP	●
▶ Medical Physics		●	●
▶ Nuclear Engineering	EN	●	●
Outdoor Products (OSU-Cascades Only)	BU		
▶ Radiation Health Physics [BS option: Radiation Health Physics Pre-Med]	SC	●	●
▶ Robotics		●	●
College of Forestry			
▶ Forest Ecosystem and Society		●	●
▶ Forest Engineering	FO		
▶ Forest Engineering/Civil Engineering	EN		
▶ Forestry [BS options: Conservation Law Enforcement, Forest Management, Forest Operations Management, Forest Restoration and Fire]	FO		
Natural Resources [BS options: Ecological Restoration; Fish and Wildlife Conservation; Forest Ecosystems; Human Dimensions in Natural Resources; Specialty; Intergrated Conservation Analyst; Landscape Analysis; Natural Resource Education; Policy and Management; Urban Forest Landscapes; Wildland Fire Ecology]	NR		
▶ Renewable Materials [BS options: Advanced Wood Manufacturing; Art and Design; Management and Marketing; Science and Engineering]	NR		
▶ Tourism, Recreation, and Adventure Leadership [BS options: Adventure Leadership Education (OSU-Cascades only); Nature, Eco, and Adventure Tourism (OSU-Cascades only); Outdoor Recreation Management (OSU-Corvallis only); Sustainable Tourism Management (OSU-Corvallis only)]	FO		
Sustainable Forest Management [M.S./PhD Options: Forest Operations Planning and Management; Forest Policy Analysis and Economics; Forest Biometrics and Geomatics; Silviculture, Fire and Forest Health; Forest Soil and Watershed Processes; Engineering for Sustainable Forestry. M.F. Options: Forest Business for Private Landowners; Spatial Science and Analysis; Silviculture, Fire and Forest Health]		●	●
▶ Wood Science		●	●
College of Liberal Arts			
American Studies (OSU-Cascades Only)	GE		
Anthropology [BA, BS options: Archaeology, Biocultural, Cultural/Linguistics, General Anthropology]	GE		
Applied Anthropology		●	●
Applied Ethics		●	
Art [BA, BS, BFA options: Art History (BA, BS only); Photography and Digital Studio (BA, BS, BFA); Studio Art (BA, BS, BFA)]	GE		
Arts, Media and Technology (OSU-Cascades Only)	GE		
College Student Services Administration		●	
Creative Writing	GE	●	
▶ Digital Communication Arts	GE		
Economics [BA,BS Options: General Economics; Law, Economics and Policy; Managerial Economics; Mathematical Economics]	GE		
English	GE	●	
Environmental Arts and Humanities		●	
Ethnic Studies	GE		
French	GE		
German	GE		
Graphic Design	GE		
History [MA, MS options: Community History and Civic Engagement; Global Perspectives on War, Peace, and Empire; History of Science and Technology]	GE	●	
History and Philosophy of Science		●	●
Liberal Studies [BA, BS option: Pre-Education]	GE		

	B	M	D
Music Studies [BM options: Instrumental Performance; Music Education; Piano Performance; Piano Performance and Pedagogy; Vocal Performance, Pedagogy, and Literature]	GE		
▶ Philosophy	GE		
Political Science [BA, BS options: Environmental and Energy Politics; International Affairs; Law and Politics]	GE		
Psychology (MS and PhD only available at Corvallis)	PS	●	●
Public Policy	PP	●	●
Religious Studies	GE		
Social Science [BA, BS option: Community Development and Leadership] (OSU-Cascades Only)	GE		
Sociology [BA, BS options: Crime and Justice; Environmental and Natural Resource Sociology]	PP		
Spanish	GE		
Speech Communication [BA, BS options: Communication, Theater Arts]	GE		
Women, Gender and Sexuality Studies	WG	●	●
College of Pharmacy			
▶ Pharmaceutical Sciences		●	●
Pharmacy, Doctor of Pharmacy (4-year professional program)			●
College of Public Health and Human Sciences			
Adapted Physical Education		●	
Athletic Training		●	
Human Development and Family Sciences [BS options: Child Development; Early Childhood (OSU-Cascades only); General Human Development and Family Sciences; Human Services (also at OSU-Cascades)]	ES	●	●
Kinesiology [BS options: Pre-Therapy and Allied Health (also at OSU-Cascades)] [MS, PhD option: Adapted Physical Activity]	ES	●	●
Nutrition [BS options: Dietetics; Nutrition in Foodservice, Culinary and Food Systems; Nutrition and Health Sciences; Pre-Dietetics]	ES	●	●
Public Health [BS options: Health Management and Policy; Health Promotion and Health Behavior] [MPH, PhD options: Biostatistics ; Environmental and Occupational Health; Epidemiology; Global Health ; Health Promotion and Health Behavior ; Health Systems and Policy; Physical Activity; Public Health Practice]	ES	GP	●
Physical Therapy (DPT) [professional program; OSU-Cascades only]			●
College of Science			
▶ Biochemistry and Biophysics [BS options: Advanced Biophysics; Neuroscience; Pre-Medicine/Biochemistry and Biophysics]	SC	●	●
▶ Biochemistry and Molecular Biology [BS options: Advanced Molecular Biology, Computational Molecular Biology, Pre-Medicine/Biochemistry and Molecular Biology]	SC		
BioHealth Sciences [BS options: Pre-Clinical Laboratory Science, Pre-Dentistry, Pre-Medicine/Pre-Podiatry, Pre-Optometry, Pre-Pharmacy, Pre-Physical Therapy, Pre-Physician Assistant]	SC		
▶ Biology [BS options: Ecology, Genetics, Marine Biology, Physiology and Behavior, Pre-Dentistry Biology, Pre-Education Biology, Pre-Medicine Biology, Pre-Veterinary Medicine]	SC		
▶ Chemistry [BA, BS options: Advanced Biochemistry, Advanced Chemistry, Biochemistry, Business, Chemical Engineering, Chemistry Education, Environmental Chemistry, Forensic Science, Materials Science, Pre-Medicine] [MS concentration options: Analytical Chemistry, Inorganic Chemistry, Materials Chemistry , Nuclear Chemistry, Organic Chemistry, Physical Chemistry]	SC	GP	●
▶ Data Analytics [MS option: Statistics]		●	
▶ Integrative Biology		●	●
▶ Mathematics [BS options: Applied and Computational Mathematics, Mathematical Biology, Secondary Teaching Emphasis, Statistics]	MA	GP	●
▶ Microbiology [BS options: Aquatic Microbiology, Pre-Medicine/Microbiology]	SC	●	●
▶ Physics/Applied Physics [BA, BS options: Applied Physics, Biological Physics, Chemical Physics, Computational Physics, Geophysics, Mathematical Physics, Optical Physics, Physics Teaching/Physics]	SC	●	●
▶ Statistics		●	●
▶ Zoology	SC		
College of Veterinary Medicine			
Veterinary Medicine - DVM			●
Graduate School Interdisciplinary Programs			
Comparative Health Sciences [MS, PhD options: Biomedical Sciences, Clinical Sciences]		GP	GP
Design and Human Environment		●	●
▶ Environmental Sciences [MA, MS, PSM, PhD options: Biogeochemistry, Ecology, Environmental Education, Natural Resources, Quantitative Analysis, Social Science, Water Resources]		GP	MID
Interdisciplinary Studies		●	●
▶ Water Resources Engineering		●	●
▶ Water Resources Policy and Management		●	
▶ Water Resources Science		●	●