

Bovine fecal sample collection

Precautions:

The animal should be in a confined area to limit movement, such as a crush or stanchion. You are working with large animals which are strong therefore precaution should be always taken into account.

Necessary Supplies:

- Disposable long gloves
- Lubricant
- Plastic teaspoon (disposable), one per animal sampled
- Plastic bag for sampling feces
- Sample container with spoon (Greiner Bio-one art 206106)
- Pre-written labels or a pen for marking the jar/jar lids.
- Plastic bags for packing of jars, such as robust 5-litre bags with sealing.

Measurement:

Put on one long glove and add lubricant on the hand. With hand the rectal is enlarged first by using a few fingers followed by the hand (Figure 1). Take fecal material out and put this in a plastic bag. Use the sample containers (Figure 2) with **animal ID** and fill these up with the fecal material for 2/3. Fill two containers per animal and store this cooled.

Laboratorium

Transfer around 1 ml into an 1.5 ml eppendorf tube labelled with the **animal ID**. Freeze and store the material at -20 degree.

Protocol bovine fecal sample collection: OPTIBOV
SOP version 01-02-2019



Figure 5: Rectal examination of cow.

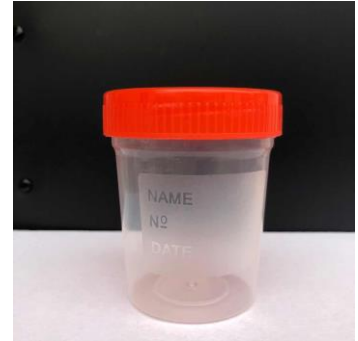


Figure 2