

Research internship vacancy: Health and Development over the long run

1) Target group

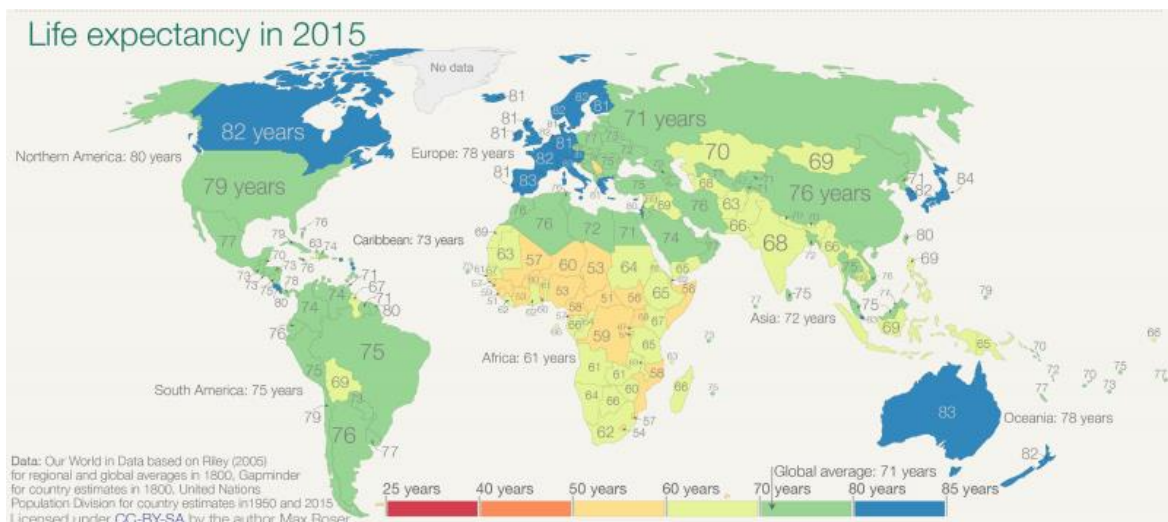
Bachelor's and Master's students from all study programs with an interest in the historical roots of global health inequality.

This project could especially be of interest to students of the Bachelor's programs Health & Society (BGM), International Development Studies (BIN) or Economics and Governance (BEB), or the Master's programs Communication, Health and Life Sciences (MCH), International Development Studies (MID), or Management, Economics and Consumer Studies (MME).

2) Description

Worldwide people's health has greatly improved in the last two hundred years, which has led to unprecedented economic and human development. Yet there remain vast inequalities between countries. For instance, child mortality rates are 14 times higher in low-income countries compared to rich countries. Similarly, large health differences among individuals persist within nations, regardless of their level of economic development. In the United States, the adult life expectancy gap between the richest and poorest was about 15 years during the period 2001-2014. These between- and within-country health differences are not new, in fact they emerged about two hundred years ago.

Why are health inequalities so persistent? What do they say about overall societal development? What can we do to achieve a healthier and more equal world? To answer these questions, we first need to understand when, how and why health progress started, and how it spread (unequally). This research internship will focus on these questions.



As a research intern you will contribute to the research of the Economic and Environmental History Group (RHI). The mission of the Economic and Environmental History Group is to offer temporal depth to societal debates and social theories on sustainable and equitable welfare development. More information on RHI can be found on the website:

<https://www.wur.nl/en/research-results/chair-groups/social-sciences/economic-and-environmental-history-group.htm>

Your supervisor will be dr. Daniel Gallardo Albarrán, who works as an assistant professor in Economic History. His research focuses on the historical roots of global health inequality and their implications for global welfare disparities. More information on his research projects can be found on: <https://danielgallardoalbarran.com/>

3) Activities and learning goals

The student will:

- 1) summarize academic articles on the evolution of health inequality and its drivers over long periods of time.
- 2) evaluate different positions in academic debates on the drivers of health inequality.
- 3) create brief reports (ca. 1000-1300 words) presenting the state of the art on a given topic related to long-term health inequality.
- 4) create data sets from available sources on health indicators along with an informative document that states how the data set was created; which sources were used; and what its limitations are.
- 5) communicate the findings of your research internship to a broad nonexpert audience (blog posts).

For students who will perform the research internship as a research practice (see below) there will be additional activities. These students will:

- 1) write a research proposal and planning.
- 2) write a reflection report.
- 3) give an oral presentation.
- 4) give an oral defence.

This research internship is a great opportunity to improve your academic skills on analyzing literature, analyzing data and academic writing. You could e.g. use the research project as a preparation for a BSc or MSc thesis project. A Research Practice is moreover an opportunity to learn more about the work of an academic and the functioning of a chair group.

5) Assessment

For BSc students the research internship will be examined as a Capita Selecta History (an 'open history course'; RHI50406). MSc students could either perform the research project as part of a Research Practice (RHI79324) or as a Capita Selecta History (RHI50406).

The assessment of a Capita Selecta History will be based on the following aspects: performance (20%), oral presentation (10%), research report (70%).

The assessment of the Research Practice is based on the following aspects: performance (40%), oral presentation (5%), research report (50%), oral defence (5%), reflection report (pass/fail). The average grade for the first four categories should be at least 5.5 and the student needs a pass for the reflection report in order to get a sufficient mark for the research practice. (see Osiris for additional information on the Research Practice)

Interested?

Contact the education coordinator of RHI: Daniëlle Teeuwen (danielle.teeuwen@wur.nl)