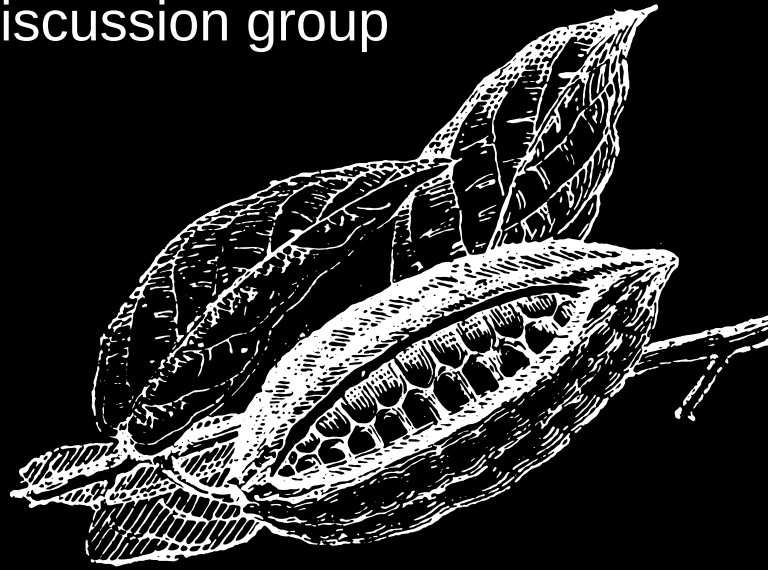


Sustainable Cacao & Coffee

PhD + Post-Doc discussion group



WHAT

Exploring the width of scientific research to create sustainable cacao and coffee value chains from **bean to beverage**

WHY

Stimulate **interdisciplinarity**
Understand **complexity**
Embrace **contextuality**

HOW

Monthly **meetings**
Group member **presentations**
Guest **speakers**

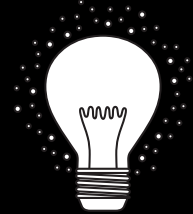


WHAT

Cacao and coffee are globalized commodities produced in many places around the world. The sustainability of the production systems in terms of **people**, **planet** and **profit** is threatened along the value chain from bean to end product by various developments (e.g. from climate change to changing food safety standards).

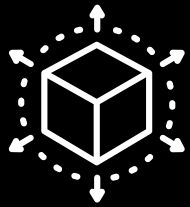
Multiple research projects are underway that aim to create a sustainable future for cacao and coffee. Reflecting science in general, the work is increasingly done in interdisciplinary settings. This discussion group is meant for all PhD Candidates and Post-Docs that are interested in broadening their understanding of cacao and coffee value chains, and is broadly meant to:

- explore the width of scientific research in cacao and coffee value chains
- gain inspiration from peers on making an impact with your research
- expand your network outside your chair group

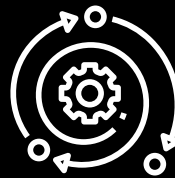


WHY

Cacao and coffee are interesting to discuss because they are **studied** from a wide variety of academic disciplines at multiple spatial and temporal scales, and they are **produced** in a wide variety of environmental, cultural and socioeconomic contexts. Joining the **Sustainable Cacao and Coffee** discussion group is interesting because:



It is a platform that will be truly **inter-disciplinary**; you will broaden your horizon and learn to appreciate the **complexity** of the bean-to-beverage system and the wickedness inherent in designing sustainable futures.



The **context-dependency** of cacao and coffee production and research demands that we think about how to communicate about our knowledge, how we engage in knowledge dissemination. In short: how we make an impact with our work.

HOW



- We aim to have **monthly** or **bi-monthly** meetings of 1.5 hours (for now virtually)
- You as a participant can determine the topic. Perhaps you want to **present your proposal** or talk about a **recent development** that sparks your interest
- We will invite **guest speakers** on a variety of topics to stimulate discussions
- Participation in the discussion group can be part of your **Training & Supervision Plan**
- Together we will produce an **output** to communicate about our sessions with others, such as a newsletter, recorded conversations or a blog.

Interested?

To **sign up**, or get more information:

wietse.wiersma@wur.nl



Kick-off meeting in January 2021

