



WIAS News

November 2021

| Number 11

Content

WIAS office News

WAPS News

WIAS Courses

Other Courses

PhD graduations

Other news

WIAS office News

WIAS Lunch Lectures

The WIAS lunch lectures take place every first Tuesday of the month from 12.15-13.00. The next WIAS lunch lecture will be given by Christine Jansen on 7 December 2021.

WIAS is looking for postdocs, staff or guest researchers who would like to present their work in 2022. Fourth-year PhD candidates are also welcome to present their work. Interested? Please send an email to wias@wur.nl.

Open office hour confidential PhD advisors

Are you experiencing problems with your PhD programme? Do you have a PhD-related problem and would you like to discuss it with a WIAS PhD advisor? The WIAS confidential PhD advisors hold an open office hour every Tuesday between 13.00-14.00 in Office E 0.172 in the Radix building.

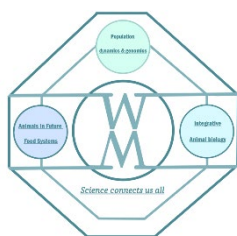
If you prefer to make an appointment, it is always possible to plan a meeting with one of the WIAS PhD advisors (online or in person), contact Paddy Haripersaud or Nicole Rodenburg for the possibilities.

WAPS News

The WAPS/WIAS is looking for 1 PhD candidate that attended the WAC 2020 for organizing the WAC 2022!

WAPS/WIAS has found four willing PhDs to organize the WIAS Annual Conference, February 2022! However, it is preferred to have an additional member that attended the WAC 2020. The **experience** with the last in-person WAC will be helpful and needed for organizing the planned WAC 2022. If everything goes according to plan, this conference will be an in-person event including keynote speakers, presentations, poster sessions and network drinks on the 11th of February 2022.

WIAS Magazine update



We are close to publishing the first Fall edition of the WIAS Magazine – do keep an eye out on our webpage!

Submission deadline for Winter edition – 3 December 2021

We are now looking for submissions for the next one: the Winter edition of the magazine! The deadline to submit an article about your research (Research Overview, Research highlight, Research light) or something about lifestyle (Student lifestyle) is 3rd of December. Check out the Author Guidelines on our website and submit your piece via email to wias.magazine@wur.nl.

Looking for a creative design person

- Are you interested in science communication?
- Do you already have experience or want to learn about website design and software to create an engaging and attractive magazine?

The WIAS Magazine is looking for a PhD student or Postdoc who is interested in the design and layout of the online and offline version of the magazine. The magazine is published four times a year.

Responsibilities

You will be responsible for putting together the magazine and for uploading the content of the magazine to the website. As part of the WIAS Magazine board you will be able to contribute to other aspects as well.

How much time will it take?

To prepare each edition we have a short meeting every two weeks and together with the actual design work it will likely take about 8 hours per edition.

Let us know you are interested by emailing us at wias.magazine@wur.nl! We look forward to working with you! Kaylee (AFI) and Annemarieke (APS)

WAPS social media

Follow the WIAS associated PhD Students council on:

Facebook group: WIAS PhD students

LinkedIn: WIAS PhD's

Instagram: [wias_phds](#)

For more information or questions regarding the WIAS PhD Council please send an email to waps.wias@wur.nl.

WIAS Seminars and Courses

WIAS recommends the following courses (registration is open):

16 November 2021 ([room for 1 more PhD](#))

[WIAS course The Final Touch](#)

26 January 2022

[WIAS/PE&RC Course Design of Experiments](#)

21, 22 & 23 February 2022

[WIAS course Introduction on personal effectiveness for your PhD](#)

1 & 2 March 2022

[Ethics and Animal Sciences](#)

9 March 2022

[WIAS course 'Societal impact of your research'](#)

For an overview of WIAS courses and seminars please click [here](#)

Other Courses

WGS Courses

15 November 2021

[Ethics for Social Sciences Research](#)

19 November 2021 (blended)

[The Essentials of Scientific Writing and Presenting](#)

23 November 2021 (online)

[Introduction to LaTeX](#)

3, 10, 17, 21 & 22 December 2021 (online)

[Career Perspectives](#)

Intake Meetings: 6 & 8 December 2021

Course days: 12 & 19 January 2022

[Career Development for Postdocs: Science and the Alternatives](#)

6 & 13 December 2021

[RMarkdown](#)

11, 12, 26 January 2022

[Effective and efficient communication in academia and beyond](#)

27 January 2022

[Philosophy and Ethics of Food Science and Technology](#)

Individual planning

[Career assessment](#)

For a complete overview of all competence, skills and career development training activities, please click [here](#).

Other courses and training of interest

2 December 2021 **TIP!**

[WGS Lunch Workshops for PhD Supervisors](#)

15 -19 November 2021

[PhD course Economics on circular economy](#)

29 November t/m 3 December 2021

[Course Introduction to Zero Inflated GLMs and GLMMs with R](#)

[Writing Lab Free feedback on your academic text during the Editing Desk walk-in hours](#)

[Academic English \(English for IELTS and RATER\)](#)

[Sports Centre the Bongerd offers health courses](#)

Library courses

11 November 2021 - Presentation

[Introduction to WUR Library for PhD candidates \(online\)](#)

11 November 2021 - Presentation

[EndNote, demonstration session](#)

18 November 2021 - Course

[Research Data Management, part 1 \(online\)](#)

19 November 2021 - Course

[Reviewing a scientific manuscript](#)

25 November 2021 - Course

[Research Data Management, part 2 \(online\)](#)

30 November 2021 - Course

[Searching and Organising Literature for PhD candidates \(online\)](#)

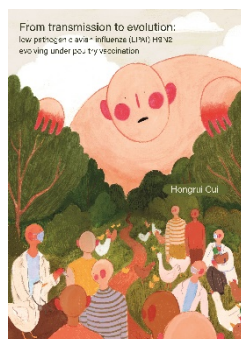
2 December 2021 - Course

[Research Data Management, part 3 \(online\)](#)

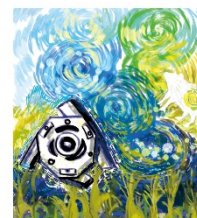
7 December 2021 - Presentation

[EndNote, demonstration session \(online\)](#)

PhD graduations



Hammer-milling Maize and Soybean Meal
Physical and Nutritional Characteristics of Particles



Hongrui Cui

Quantitative Veterinary Epidemiology (QVE)

Date: 12 November 2021

Time: 16:00

From transmission to evolution: low pathogenic avian influenza (LPAI) H9N2 evolving under poultry vaccination

(co)promotors: : Prof. Dr MCM de Jong, Prof. Dr MM van Oers, Prof. Dr Z Li and Dr N Beerens

Fang Lyu

Animal Nutrition Group (ANU)

Date: 15 November 2021

Time: 11:00

Grinding characteristics of maize and soybean meal

(co)promotors: : Prof. Dr WH Hendriks, Dr Ir AFB van der Poel and Dr M Thomas



Windy Al Zahra

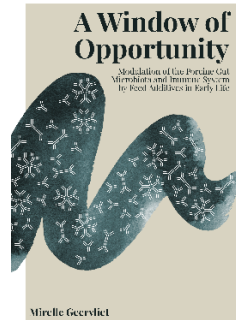
Animal Production Systems (APS)

Date: 23 November 2021

Time: 11:00

Improving manure management at smallholder dairy farms- a multi-level analysis

(co)promotors: : Prof. Dr IJM de Boer, Dr SJ Oosting and Dr CE van Middelaar



Mirelle Geervliet

Cell Biology and Immunology (CBI)

Date: 10 December 2021

Time: 11:00

A Window of Opportunity Modulation of the Porcine Gut Microbiota and Immune System by Feed Additives in Early Life

(co)promotors: : Prof. Dr HFJ Savelkoul, Prof. Dr VPMG Rutten and Dr E Tijhaar

Other news

The PhD office has moved!

From Thursday 4 November 2021 on, the PhD office is located in the Atlas building. You can find us on the ground floor, rooms D.001 and D.003. Are you handing off copies of your PhD thesis? You can deliver these in room D.001. The courier number maintains to be 17. Please find all information regarding the WU PhD programme on our [website](#).

Coaching ACT students

The Academic Consultancy Training (YMC 60809) - is looking for WUR colleagues interested in coaching ACT students. See this [video clip](#) briefly introducing the role of a coach in ACT.

- A coach, preferably, coaches at least two periods per year.
- Coaching one team in one period engages the coach for 70 hours, which are reimbursed through the educational database.

For more information, please feel welcome to contact: coordination.act@wur.nl

Grants for young researchers who want to have an expert scientific training and to develop their academic career in Switzerland.

On behalf of the federal government following Switzerland's non-association to Horizon Europe, the [SNSF](#) has introduced a transitional measure for the Marie Skłodowska-Curie Actions (MSCA) individual postdoctoral fellowship – **the SNSF Swiss Postdoctoral Fellowships (SPF)**. This funding scheme will offer applicants with a PhD and no more than eight years of postdoctoral experience (extension under certain circumstances possible) a position at a research institution in Switzerland for 12-24 months.

To be eligible, the applicant must not have resided or carried out their main activity (work, studies, etc.) in Switzerland for more than 12 months in the 36 months immediately prior to 12 October 2021 (the deadline set for this year's MSCA Postdoctoral Fellowships).

The grant includes the postdoctoral fellow's salary as well as social security contributions and contributions to research and conference costs.

This may be a unique opportunity for incoming postdocs, which may not be offered again by the SNSF.

- The call for is already open, more information can be found on the [SNSF website](#).
- Interested applicants need to pre-register by **15 November 2021 and submit their proposals by 15 December 2021** via [mySNF](#)
- The evaluation will be carried out remotely based on expert reviews in a single step and without interviews.

Lunch Workshop: Fundamentals of Knowledge Utilization

Do you face difficulties in realizing the 'impact goals' of your research project or public-private collaborations? Are you writing your next NWO/ grant application and struggling with conceptualizing a realistic 'knowledge utilization' plan for the years ahead? If the answer is yes, let us tell you - you are not alone. Value creation is the third core task of WUR and the office of Corporate Value Creation (CVC) supports you in realizing your 'knowledge utilization' plan and offers tools to enhance the societal impact of your research.

Knowledge utilization is the process of translating your research into concrete applications implemented by the scientific, industrial community, government or society at large. If you want to know what aspects should you consider for a realistic 'knowledge utilization' plan and what kind of support WUR offers in this process? this workshop we will precisely do that. The workshop is appropriate to all WUR researchers.

Tuesday 23 November 2021, 12:00 to 14:30 (Lunch Included)
Plus Ultra II, Wageningen Campus

Participation is free (limited capacity of 30) and Lunch will be provided. Prior registration is however needed at this [link](#) or at the button below. An Outlook calendar invite with detailed program and room location will be sent to registered participants.

If you have any questions about this WIAS News please contact WIAS at wias@wur.nl