

# UNIVERSITY OF SÃO PAULO - USP "LUIZ DE QUEIROZ" COLLEGE OF AGRICULTURE - ESALQ



## ESALQ

The background of the cover is a photograph of the ESALQ building, a large, light-colored, classical-style structure with many windows and arches. In the foreground, there is a pond that reflects the building and the sky. To the left, there are palm trees and a tree with bright red flowers. The sky is blue with some white clouds.

*International Student Guide*



---

## *Sumário*

---

<b>We are proud to welcome the international students in our College!.....</b>	<b>3</b>
<b>International Student Services and Advising Center .....</b>	<b>4</b>
<b>The University .....</b>	<b>5</b>
<b>Testimonials .....</b>	<b>6</b>
<b>1. Study at ESALQ .....</b>	<b>7</b>
1.1 General Information .....	8
1.2 Before applying.....	9
1.3 How to apply? .....	9
1.4 Pre departure.....	10
<b>2. Arriving in Piracicaba .....</b>	<b>12</b>
<b>3. Student &amp; Campus Life.....</b>	<b>14</b>

---

***We are proud to welcome the international students in our College!***

---



As students from the Academic Center (CALQ) would say, this is a very special school which hides history in every corner along with a lot of work, strength and dedication of each one of those who have crossed the borders of this enchanted place. That is how this centenary agriculture school have become one of the most important in the world.

You are invited to explore ESALQ/USP's many programs, services, professors, internships, social works, departments, fraternities, sports practices and all kinds of activities. Have your schedule full! Your involvement in campus life will make you feel at home right away, help you make new friends, enhance your knowledge of our culture and enrich your academic experience. At the same time, you will give us the opportunity to get to know you and learn from your diverse experiences and perspectives.



**Find out what ESALQ has to offer!**

---

## *International Student Services and Advising Center*

---

### ESALQ INTERNATIONAL OFFICE

#### Management



**Helaine Carrer**

President of the International  
Relations Committee  
+55 (019) 3429 4344  
[hecarrer@usp.br](mailto:hecarrer@usp.br)



**Susy Ramos**

Head of the International Office  
+55 (019) 3429 4414  
[international.esalq@usp.br](mailto:international.esalq@usp.br)

#### Staff



**Amalia Inês Antão**

Operational Support I  
+55 (019) 3429 4241  
[international.esalq@usp.br](mailto:international.esalq@usp.br)



**Fernanda Massola**

Operational Support II  
+55 (01) 3429 4419  
[fmassola@usp.br](mailto:fmassola@usp.br)

---

## *The University*

---

Luiz de Queiroz College of Agriculture (ESALQ) is located in Piracicaba city - São Paulo is currently considered a **Center of Excellence for Undergraduate and Graduate programs in Agricultural, Environmental, Biological, and Applied Social Sciences**, acknowledged for its outstanding scientific and technical performance.

Its academic community is comprised of 800 faculty and staff members along with nearly 3,400 undergraduate and graduate students. Its total area (3,825.4 hectares) corresponds to 50% of the total area of USP.

ESALQ offers 7 undergraduate programs and 15 graduate programs (one international), in addition to one inter-institutional and two inter-unit programs, in its 12 departments and more than 130 laboratories. It houses a reference library in Agricultural Sciences in Latin America, 4 experimental stations located in Anhembi, Anhumas, Itatinga, and Piracicaba – “Areão” Experimental Station, as well as an enterprise incubator, ESALQTec.

ESALQ has graduated 15,000 students. It is the first Brazilian higher education institution to graduate more than 11,000 Agricultural Engineering. ESALQ is part of the international scene due to agreements with foreign institutions, exchanging students and faculty members, and offering double degree programs in Agriculture and in Food Science with French institutions.



---

## Testimonials

---



**Jardar Lindaas Bringedal**

My first time in Brazil and at ESALQ has been really good. ESALQ is where I spend most of my time and I like the beautiful campus that is constantly changing in colors with the different trees flourishing. People are open and welcoming, so it has been easy to get to know new people and to settle quickly. There are always some class mates who is eager to help if there is something I don't understand, so the classes are also going ok, even though it is hard with the Portuguese language. But the best thing about my stay is probably the chance to live and experience a new culture. It makes me see things in a new way and makes me more open for differences. Also, worth mentioning that Piracicaba is a nice city, with different interesting culture activities.

**Norwegian University of Life Sciences**



---

## 1. Study at ESALQ

---

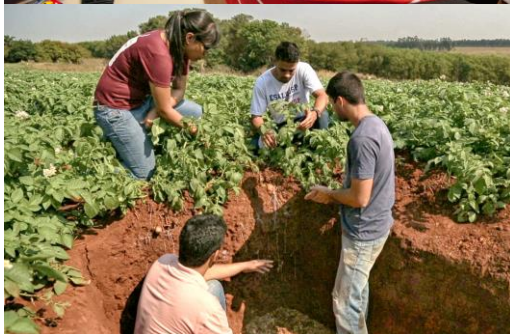
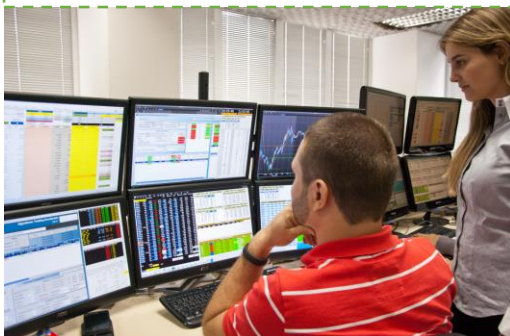
### Undergraduate Programs:

Agriculture;  
Biological Sciences;  
Economics;  
Environmental Management;  
Food Science;  
Forestry;  
Management.



### Departments:

Agri-food Industry, Food and Nutrition (LAN)  
Animal Science (LZT)  
Biological Sciences (LCB)  
Biosystems Engineering (LEB)  
Crop Science (LPV)  
Economics, Administration and Sociology (LES)  
Entomology and Acarology (LEA)  
Forestry Sciences (LCF)  
Genetics (LGN)  
Math, Chemistry and Statistics (LCE)  
Plant Pathology and Nematology (LFN)  
Soil Science (LSO)  
Center of Nuclear Energy in Agriculture (CENA)



---

## 1.1 General Information

---

You can apply for the international exchange program if you are currently enrolled in your first year (or above) of study at a university that has an international exchange agreement with USP. For information about the double degree at ESALQ, please e-mail our international office.

### ✓ Credit system

We recommend exchange students to apply for 20 local credits per semester. Each credit at USP corresponds to 15 presential hours (class credit). Please check with your home institution if they ask you for a specific workload before applying for courses.

### ✓ Grading system

Undergraduate grades may range from zero to ten, and these numbers may be rounded to the nearest tenth. In order to be approved students must fulfill two conditions: **minimum score of 5.0 (five)** and **minimum course attendance of 70%**. Each professor has his/her own evaluation criteria, usually involving tests and reports, which are detailed in the first class.

### ✓ Structure of the academic year

The University of São Paulo follows the semester structure of the academic year. That means we have the **first semester**: February to July and **second semester**: August to December.

### ✓ Portuguese language

All undergraduate classes are taught in Portuguese, besides summer courses. Exchange students coming to ESALQ-USP are not required a specific level of the Portuguese language. However, for those who don't have previous knowledge of this language, we do recommend them to attend Portuguese classes in their home countries as it will be of great help outside the campus. A 30 hours online Portuguese Course for Foreigners is offered at the beginning of the academic semester, free of charge. As an exchange student, you must write reports and answer exams in Portuguese.

### ✓ Tuition & fees

USP does not charge school fees, given its status as a public university. The student will be responsible for his/her own expenses (including the purchase of books and school supplies and accommodation).



---

## 1.2 Before applying

---

Exchange students are allowed to attend courses at USP for one or two semesters, which can be further extended up to two more semesters if authorized by both the foreign institution and USP. Students can obtain credits or conduct research valid to their home institution.

### ✓ Find out our majors

#1: Check on our available undergraduate majors and see what fits better your academic interests:

[www.en.esalq.usp.br/undergraduate](http://www.en.esalq.usp.br/undergraduate).

#2: Access the reference curriculum of the major to check the available classes, respective credits, semester and hours. Each discipline has its own code for internal reference.

**Note<sup>1</sup>:** Be aware to the semester in which the discipline is being offered. If the course is available in the **1st semester**, it means that it will be taught between February and July; if it is available in the **2nd semester**, then it will be taught between August and December.

---

## 1.3 How to apply?

---

To be eligible for an exchange program at ESALQ, you must be nominated by your home University to our international office ([international.esalq@usp.br](mailto:international.esalq@usp.br)). After that you will receive an e-mail with links and instructions about how to apply.

### ✓ Important documents

After being nominated by your home university and accepted by ESALQ, you will need to attach in your application the following documents:

- Application form;
- Recommendation Letter written by the student's home university;
- Transcript of records translated into English or Portuguese and acknowledged by the student's institution;
- Copy of the passport page that contains personal data (copy in PDF file);
- ID Picture (in .jpg file format), maximum size 50kb.

To conclude the enrollment, the student's home university must send to USP the proper Student's Visa and a copy of the life and health insurance paper.

### ✓ Nomination deadlines

**October 30th:** for exchange in the first semester of each year (classes from February to June).

**April 30th:** for the exchange in the second semester of each year (classes from August to December).

### ✓ Schedule

You can also set up your time grid previously using the discipline code. To do so, visit the MatrUSP site (in Portuguese) at <http://bcc.ime.usp.br/matrusp/>, set up your grid and send us by e-mail. By doing this you can choose your schedules. If you do not send us previously the International Office will do it for you without considering your preferences.

**If you have already taken all these steps... you can apply for your Visa!**

---

## 1.4 Pre departure

---

### 1.4.1 Visa (VITEM-IV)

Exchange students must ask for a temporary visa for studies (VITEM-IV) at the nearest Brazilian Consulate for which we will mail an ACCEPTANCE LETTER. **Please note that a tourist visa is not valid. Students without a student visa cannot be enrolled in courses.** If necessary, an extension may be obtained with the Federal Police in Brazil, if requested at least 30 days prior to its expiration.

Please access <http://www.itamaraty.gov.br/en/> Item: Brazilian missions abroad - to have all the information about Brazilian consulates and embassies around the world.

The Brazilian Consulate within your area of jurisdiction will require you to fill out a visa application form to obtain a student visa and pay a fee. This form must be stamped by the Brazilian Consulate and must be presented to the Federal Police (Immigration) office no later than 90 days after your arrival in Brazil.

### 1.4.2 Foreigner ID (Carteira de Registro Nacional Migratório - CRNM)

The foreign card is required for all foreign people who will stay in Brazil more than 90 days. The requested documents are:

- ✓ Original Visa order expedited by a Brazilian Consulate or Embassy in your home country;
- ✓ Passport photocopies;

- ✓ 2 colored photos size 3 cm (wide) x 4 cm (tall): with a white backdrop, looking towards the camera and not smiling;
- ✓ Payment of a fee for the Immigration Department (provided in Brazilian territory). We will provide more information when you get here.

### 1.4.3 Taxes and registration fees

To check the visa application fee you must access the respective Brazilian consular at your country (<http://www.itamaraty.gov.br/en/> Item: Brazilian missions abroad) and look for the visa section. This fee may vary from U\$100 to U\$465 depending on your home country.

If you already have the consular visa registration, you will pay a fee for the issuance of a national migration registry card in the amount of **R\$204,00** when you get in Brazil. In case that you do not have the consular visa yet, you will have two taxes to pay, the same as previously mentioned and a second corresponding to the Registration after publication in the Official Union, in the amount of **R\$168,13**.

**Be aware:** As an international exchange student, you cannot enroll at ESALQ without a student visa. This visa must be obtained prior to arrival.

**Note<sup>1</sup>:** The process may take a few weeks so begin early. Although, one's first entry into Brazil must take place within 90 days from the date when the visa was issued.

**Note<sup>2</sup>:** Student Visa (i.e. Vitem-IV) holders are not allowed to engage in any paid activity in Brazil.

### 1.4.4 Health insurance

Students must insure themselves from their home countries before arriving in Brazil. ESALQ-USP will not take responsibility for any accidents since it is students' responsibility to arrange the proper international health insurance. Please check the insurance companies' rules before leaving your country.

The University of São Paulo demands that students obtain health insurance (travel insurance), which should be purchased in their home country prior to their arrival in Brazil. The insurance policy must be valid for the entire period of intended stay in the country. The choice of one specific travel insurance or another is the student's responsibility. The foreigner will be allowed to use the services of the Brazilian Public Health System only in case of emergency.

**Note<sup>3</sup>:** The home institution must e-mail your life and health insurance information prior to your arrival to: [international.esalq@usp.br](mailto:international.esalq@usp.br).



---

## 2. Arriving in Piracicaba

---

### 2.1 The city of Piracicaba



Photo: Rubens Chiri/Banco de Imagens do Estado de São Paulo

The place is named after the waterfall river that bisects the city. Piracicaba literally means "the place where the fish stops" in the Tupi language (language that was spoken by the native people of Brazil). The main motor of its economy is sugar cane cultivation. A large company that has a center of research on genetic improvement of sugarcane, CTC, helps to fuel this growing industry.

Piracicaba also holds a place for large industries, such as Caterpillar, ArcelorMittal, and Hyundai. The city is also known for its many Higher Education Institutions Luiz de Queiroz College of Agriculture of the University of São Paulo (ESALQ/USP), Piracicaba Odontology Faculty of the Campinas State University (UNICAMP), Piracicaba Methodist University (UNIMEP) and Technology University of Piracicaba (FATEC), among others.



#### Weather tips:

Temperatures in Piracicaba vary from 37°C (maximum) to 12°C (minimum) throughout the year. During wintertime (July, August and September), it gets chilly and windy, with an average temperature of 16°C. The month with the highest temperatures is February, which has an average temperature of 30°C. Therefore, we strongly advise you to bring some few warm clothes, but prepare yourself for high temperatures, especially if you arrive in the first semester.

## 2.2 How to get here

**You can reach Piracicaba by bus:** for this type of transportation you will find two options:

#1 Go from Aeroporto Internacional de Grarulhos (GRU) to Terminal Rodoviário Tietê:

### # From Guarulhos Airport to Campinas bus Station to Piracicaba

Take a bus inside Guarulhos Airport (ask for “VB Transportes” – at Terminal 2 - ASA “C”) to Campinas Bus Station (the ticket costs around R\$ 35). For information about the timetable, please check the following website (In Portuguese), and select from ‘Cumbica (Guarulhos)’ to Campinas, SP:

<https://www.lirabus.com.br/servicos/translados/#tab-id-2>

Take a bus from Campinas bus station (ask for “Viação Piracicaba”) to Piracicaba (the ticket costs around R\$ 20,00). The bus leaves Campinas to Piracicaba Bus Station every hour from 5h00 to 23h00. You can buy the ticket online: <https://www.guichevirtual.com.br/campinas-sp-v-piracicaba-sp>.

### # Tietê Bus Station (São Paulo City) to Piracicaba

In case you are in São Paulo downtown, you can take a bus at Tietê Bus Station (Rodoviária de São Paulo (ask for “Viação Piracicabana”) to Piracicaba Bus Station (the ticket costs around R\$ 55,00). (You can also take a uber or taxi from the Airport to Tietê Bus Station). The bus leaves Tietê Bus Station to Piracicaba Bus Station. You can check the schedules here: <https://www.guichevirtual.com.br/sao-paulo-tiete-sp-v-piracicaba-sp>

**Note<sup>4</sup>:** Email your flight and bus arrangements to [international.esalq@usp.br](mailto:international.esalq@usp.br) so we can know the exact day and time of your arrival in Brazil and in Piracicaba!

---

## 3. Student & Campus Life

---

### 3.1 Facilities:

#### ✓ Students' Restaurant

ESALQ has a restaurant for students that charge around R\$2 per meal, and most students use this facility. It is a self-service restaurant, popular known as "Rucas" (University Restaurant), with a menu prepared by a nutritionist. It serves Lunch and dinner. You can access the menu in Portuguese with the following link: <https://www.esalq.usp.br/boletim/cardapio-do-ru>.



#### ✓ Faculty' Restaurant

Although called the Faculty Restaurant, it is open to everyone on the campus who would like to pay a bit more for sophisticated food and a high-quality service. It is also a self-service type of restaurant and the price is R\$ 57.20 per kilo.

#### Open hours:

- **Monday to Friday:**  
**Lunch Time:** 11:00am – 01:30pm  
**Dinner Time:** 5:30pm – 07:00pm
- **Saturdays:**  
**Lunch Time:** 11:30am – 1:00pm

#### ✓ Library



With the most complete collection of texts related to Agricultural Sciences in Brazil – about 370 thousand units, the library acts as a dynamic center of information for the management and dissemination of knowledge, attending the USP community and the whole society. As an exchange student, you are allowed to have

access to the libraries available on campus with your USP card. You can have more information and check the titles accessing: <https://www.esalq.usp.br/biblioteca/>.



## ✓ Sportive Center



The Sports Practices Technical Section (SCPRAES) of the USP “Luiz de Queiroz” Campus City Hall aims to promote physical-sport and recreational activities for the university community, teaching and non-teaching staff, as well as their legal dependents. It also develops physical activities that are part of the Program: University Open to the Third Age. It organizes sporting events and individual and collective programs.

### Open hours:

- **Monday to Friday:**  
7:00 am – 22:00 pm
- **Saturdays:**  
9:00 am – 18:00 pm
- **Sundays and Holidays:**  
Closed

### Athletic Events

Founded in 1903, the A.A.A.L.Q. (‘Luiz de Queiroz’ Academic Athletic Association) organizes the sports practices and competitions for ESALQ students. Their office is located in the gymnasium court and you are more than welcome to go there to check out all sports timetable or look for one of its members. They also sell t-shirts, shirts, coats, jackets and other.

More info: please visit (in Portuguese):  
<http://aaalq1.wixsite.com/aaalq>



## ✓ “Luiz de Queiroz” Choral/Orchestra

If you are good at singing, enjoy singing or play any kind of instrument, you should attend the ESALQ's Choral group.

## ✓ Academic Center

“Luiz de Queiroz” Academic Center (CALQ) is a student organization founded in 1909 that deals with all students' political views towards their courses or towards the campus. They also promote off-campus events such as barbecue, concerts, presentations, etc. to raise funds and integrate students.

### Fun fact: ESALQ's Symbol

The A-shaped symbol represents our University at any sport competition, meeting or event. It was created in 1932, by Delphim da Rocha Neto, a famous sport's chronicler back in those times. The symbol reminds a Bulldog, for its position of defense.



## ✓ Good to know: Brazilian Food!

**Brazilian diet:** a variety of meats, fish, poultry, grains, beans, vegetables and fruits. Most common meal: rice, beans, steak, salad with potatoes and yucca flour (farofa) as a side. According to most nutritionists, it's a well-balanced meal. Try to get used to it in order to make your life easier while you're here.

**Feijoada:** black beans cooked with pork served with rice, kale, tomato salad, and farofa.

**Churrasco:** large slices of barbecued beef, pork and other meats served with farofa, salad, and bread.

**Eating out:** you will find grilled or roasted meats, pizzas, and hamburgers.

**Vegetarians:** Even though our meals usually contain meat, it is not hard for vegetarians to eat well in Brazil.

### 3.2 Health matters

If you get sick or if you just do not feel well physically or psychology, you should contact your health insurance company to check which hospitals are available in the city.

You can also use the public health service. For this, you need to create a **SUS Card**. To create it you need to present your passport and a proof of residency (water, electricity, telephone bill, etc) in a post service (UBS, UPA or Santa Casa).

Here are some addresses that you can use:

UPA Piracicamirim (24 hours)

Address: Rua Rio Grande do Norte, 135

Phone: 3426-4973 / 3411-3100 / 3426-5973

UBS Independência (7 am to 4 pm)

Address: Rua Pedro Chiarini, 144

Phone: 3433-0148

Santa Casa Saúde de Piracicaba

Av. Independência, 940 - Ground floor - Bairro Alto

### 3.3 Accommodation

*On-campus* accommodation is not available. Although ESALQ has a dormitory building, the rooms are reserved only for low-income family students in Brazil. The International Office can help you in finding accommodation. There are two possibilities on that matter:

#### ✓ Off-campus houses ("república")

Student residences (male or female). Some of them have included meals, internet, housekeeper, furniture, etc. You just have to bring bedding and towels. Most "repúblicas" have shared rooms with other students and. The "repúblicas" can be compared to fraternities in which you will be introduced to all fraternity's friends and they will help you with anything you might need.

In this website (in Portuguese) you can access all the information about ESALQ students' houses:

<https://conselhoderepublicas.com.br/>.

Every year we have especificly "Repúblicas" that sign for receiving international student. You can check the updated list of them by contacting our international office: [international.esalq@usp.br](mailto:international.esalq@usp.br).



### ✓ Off-campus rooms

You can also rent private rooms that are usually individual in residential houses; the kitchen and sometimes the bathroom is usually shared with other tenants. There are female and male houses. Costs vary from R\$400,00 to R\$600,00.

Traditionally most exchange students prefer to live near ESALQ, in nice and safe places, a 10 to 20 minutes walk distant from campus. By living close to campus some students chose to bike to campus and around.

**Note<sup>5</sup>:** The electric current in São Paulo is 127 volts (60 cycles). If you have any doubts, check with the owner of the house or apartment. Transformers to boost the current from 110 volts to 220 volts are available in most electrical supply stores. It is also advisable to purchase an international outlet converter

**Note<sup>6</sup>:** Facebook groups like “ESALQ” or “Classificados ESALQ” are also useful for off-campus housing. You can request to join then, see what is available and get to know some students.

## 3.4 Financial matters

The Brazilian currency is the REAL (R\$) and we suggest that you bring some cash with you because currency exchange offices are not available everywhere and rates are higher at airports.

### ✓ Banking

To open a bank account, you will be requested to provide an address and a CPF (Cadastro de Pessoas Físicas) is the registry of a citizen with the Brazilian IRS (Receita Federal). To have information about how to apply for a CPF you can check: <http://www.portalconsular.itamaraty.gov.br/outros-servicos/cpf> (Portuguese) or <http://www.receita.fazenda.gov.br/Aplicacoes/ATCTA/CpfEstrangeiro/fcpfing.asp> (English).

**Note<sup>7</sup>:** If you will be here only for 1 or 2 semesters and do not want to apply for a CPF, we do not recommend you to open a bank account. However, you can do withdraws in the Santander Bank, located in campus, where they have an ATM machine. There is also a currency exchange office located by the Piracicaba mall if necessary.

### ✓ Living expenses

**Accommodation:** prices range from R\$ 400 to R\$ 1000 per month, with different options.

**Food:** At the student’s restaurant by the university one meal is R\$2. In the city, there are several types of restaurant and the average price is R\$ 30/kilo.

**Transport:** prices vary according to the service provided (taxi, uber, urban bus, etc.). In the city of Piracicaba the ticket for the public transport costs R\$ 4.

### ✓ Phone carrier / mobile

The four largest mobile phone companies in Brazil are Vivo, Claro, TIM, and Oi. If you are staying for 1 or 2 semesters and do not want to pay for roaming services, we do recommend you to get a local SIM card. It can be useful for calling friends, using GPS while traveling or walking around the city, emergencies and even safety. Most of the company's offices are located by the Piracicaba mall and you can choose a plan that suits better your needs during your stay.

## 3.5 Academic matters



### ✓ Supervised internship

Internship in which you will be working in a research project along with an advisor professor.

### ✓ Extension internships

Internship in which you will be part of a group of students that work together in a research/project/business run by the students. As most of the internships select people throughout a selection process, the international student might not be able to be part of it officially, but you can always try to get involved and help them with the matters that interest you. Besides, you can also work with a professor in any of the department laboratories. More information about some of these internships is available on the topic explaining each department.

### 3.6 Orientation day - IMPORTANT!



All international students should arrive in Piracicaba at least one week before classes start for the Orientation Day. In the first semester, it usually happens in the last week of February and, in the second semester, in the last week of July. During the orientation days we will deal with administrative procedures, which have to be done right after your arrival in Brazil, such as:

- ✓ Enrollment procedures;
- ✓ Orientation for Registration at Brazilian Federal Police.

### 3.7 ESALQ Summer School



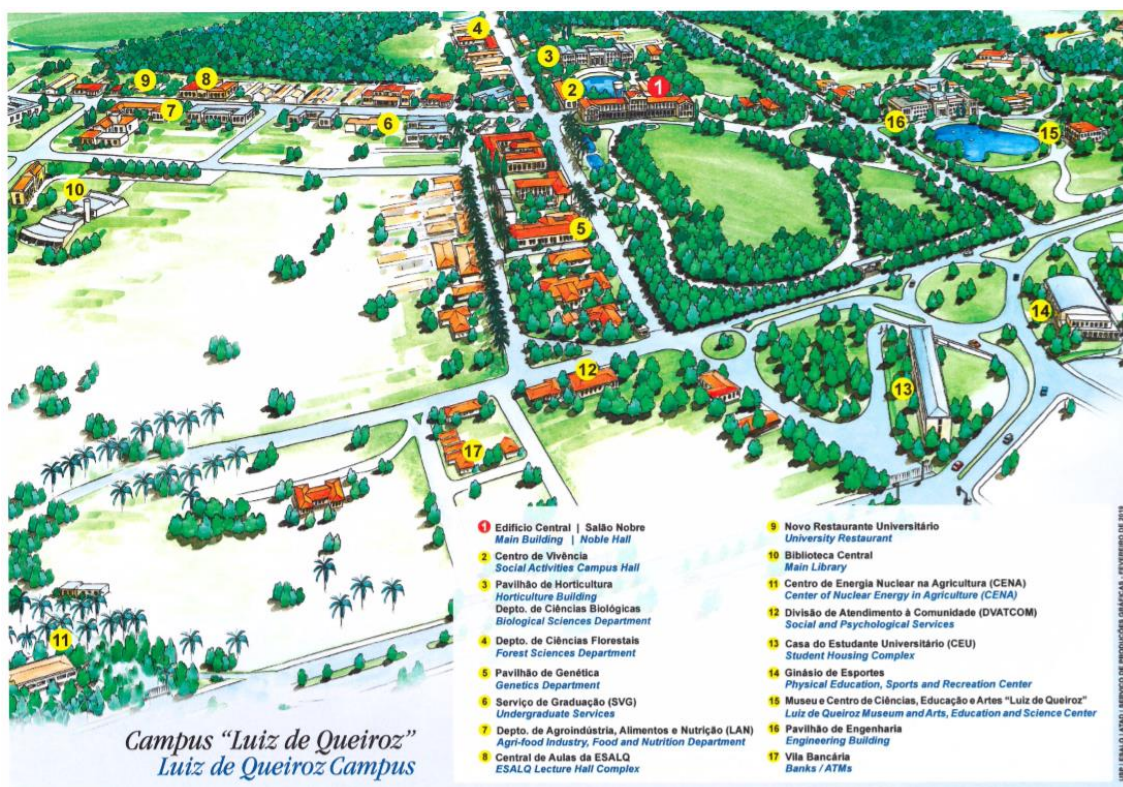
Every year, during the month of July, we have the ESALQ Summer School. All international students can participate without any costs. This program aims to introduce an academic experience in Tropical Bio-based Production Systems to undergraduate and graduate students from partner universities interested in

identifying research opportunities in collaboration with ESALQ. If you are here in Piracicaba during this month and feel interested in participating, just let us know.

**Academic calendar :** You can check it academic in the following link (in Portuguese): <https://uspdigital.usp.br/iupiterweb/> - Item “Calendário escolar”.



### 3.8 Piracicaba Campus Map



### 3.9 Final Greetings

We hope you have wonderful moments at our university and in our beloved country. Make the most of all the features available. We are sure you will!

Please don't hesitate in contact us by email ([international.esalq@usp.br](mailto:international.esalq@usp.br)). Our team will do their best to help you get settled!