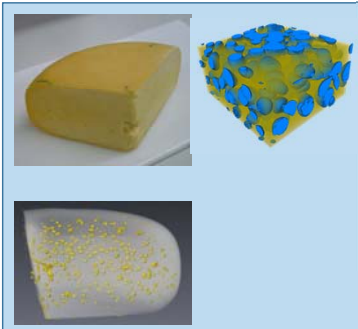


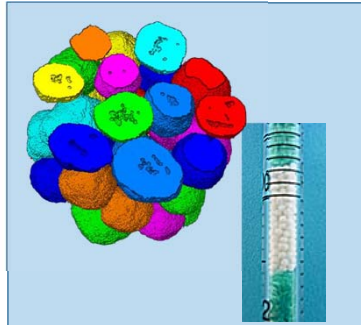


Looking inside materials using X-Ray Tomography

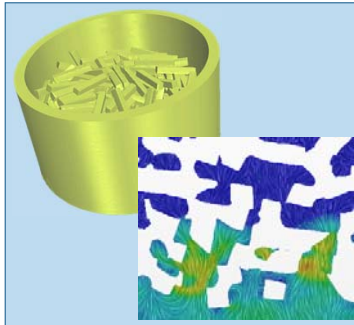
Remco Hamoen, Marcel Meinders, Erik Esveld



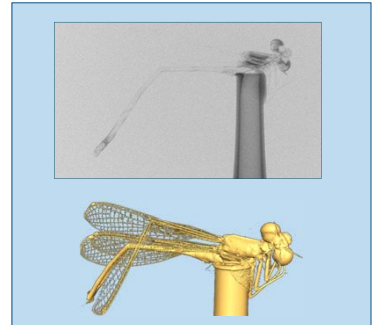
Gouda Cheese | Hole distribution



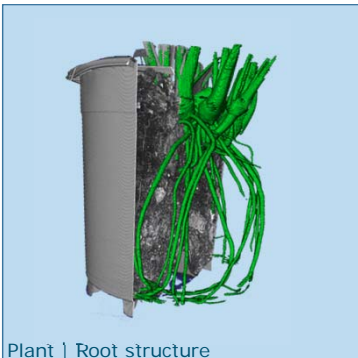
Microcrystalline cellulose



Flow of oil between French fries



Dragonfly



Plant | Root structure



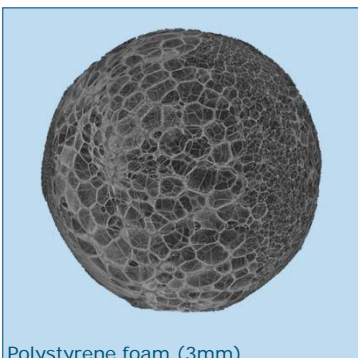
Extrusion moulded products



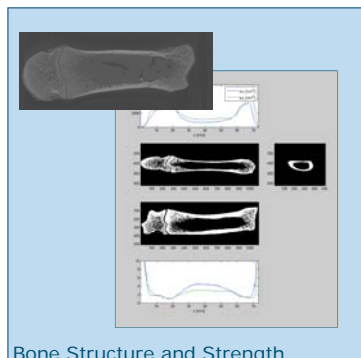
Candy



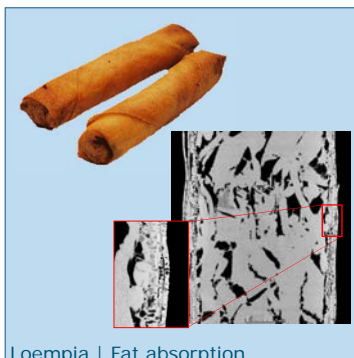
Dried droplet (\varnothing 500 μ m)



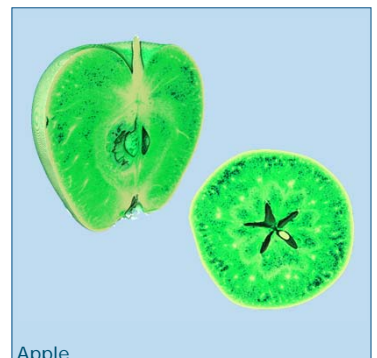
Polystyrene foam (3mm)



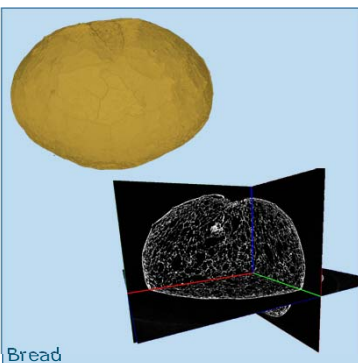
Bone Structure and Strength



Loempia | Fat absorption



Apple



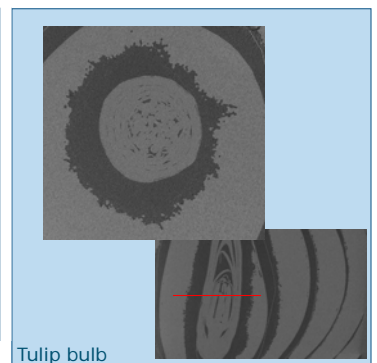
Bread



Rice plant



Chocolate mousse



Tulip bulb

