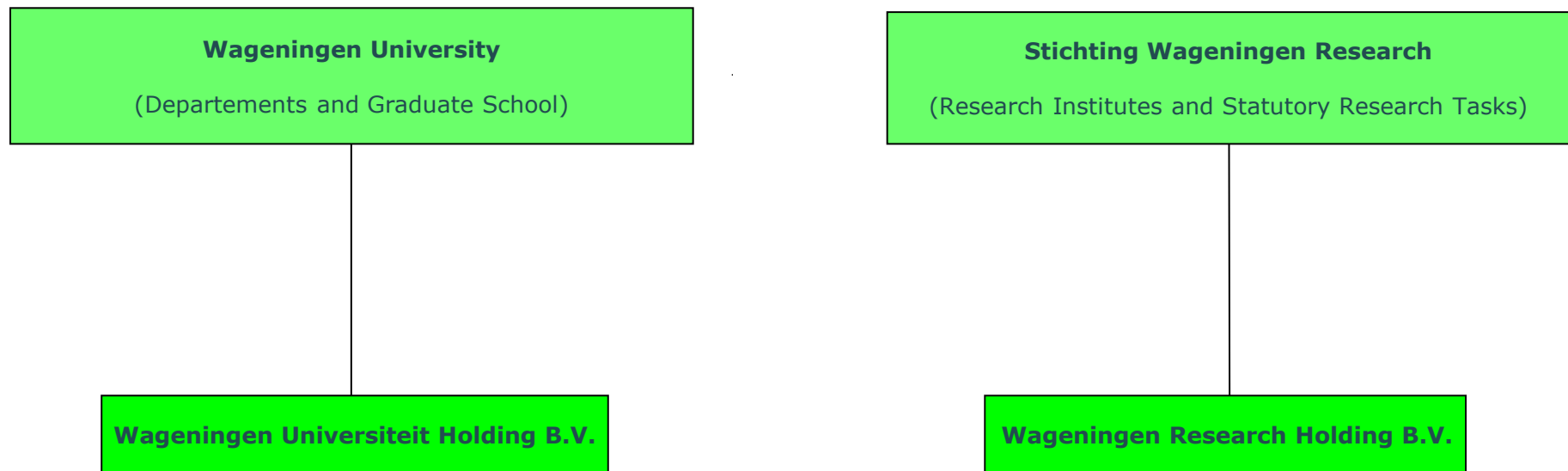


Legal Chart Wageningen University & Research



The Executive Board of Wageningen University (WU) and the Executive Board of Stichting Wageningen Research (WR) are composed of the same individuals, making WU and WR a so-called personal union. The Supervisory Boards are staffed in the same way. This aims to create maximum unity of governance between Wageningen University and Stichting Wageningen Research.

Participations and other affiliations

Legal Entity	Participation in	Percentage
Wageningen University	Wageningen Universiteit Holding B.V.	100%
Wageningen Universiteit Holding BV	Green Dino B.V.	11,40%
	Ceradis B.V.	1,6%
	The Akkermansia Company S.A.	4.52%
	Caribou Biosciences Inc. (Delaware)	0.39%
	Rival Foods B.V.	5%
	Scope Biosciences Holding B.V.	10%
Stichting Wageningen Research	Wageningen Research Holding B.V.	100%
Wageningen Research Holding B.V.	Wageningen Business Generator B.V.	100%
	Wageningen (Beijing) Science & Technology Consulting Services Ltd.	100%
Wageningen Business Generator B.V.	Exploitiemaatschappij Windmolenparken Lelystad (EWL) B.V.	100%
	Windmolenpark Mammoethocht B.V.	100%
	Windmolenpark Neushoorntocht B.V.	100%
	Covaccine B.V.	25%
	Isolife B.V.	5%
	Dutch Greentech Fund B.V.	4,76%
	Agri New Ventures B.V.	100%
	50% partnership in: VOF Oostwaardhoeve (VOF OWH)	
	Fresh Forward Holding B.V.	49%
	100% participation in Fresh Forward Breeding B.V.	
	100% participation in Fresh Forward Marketing B.V.	

Other affiliations

Stichting Welcome Center Food Valley
 Innovation Industries Fund Coöperatief U.A.
 Innovation Industries Fund II Coöperatief U.A.
 SHIFT Invest coöperatief U.A.
 SHIFT Invest III coöperatief U.A.
 Stichting ISRIC
 Amsterdam Institute for Advanced Metropolitan Solutions (AMS Institute)
 Stichting Akkerweb