



EuroDISH

Determinants • Intake • Status • Health

Studying the need for **food** and **health**
research infrastructures in **Europe**

Introduction to EuroDISH

Krijn Poppe

May 15th 2015 • Expo Milano



Grant no 311788-CSA-SA

www.eurodish.eu



EuroDISH

Determinants • Intake • Status • Health

Studying the need for **food** and **health**
research infrastructures in **Europe**

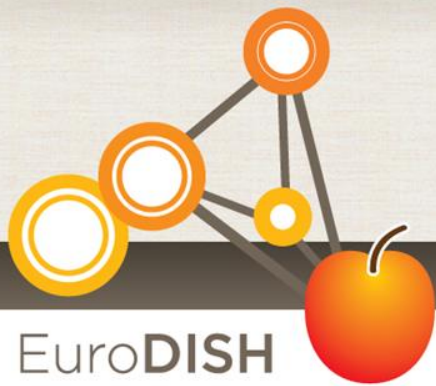
Challenges in the Food & Health research domain



Krijn Poppe

Studying the need for food and health research infrastructures in Europe

www.eurodish.eu



EuroDISH: The consumer as link between the Agrifood & Health sector

EuroDISH

Healthy and active live for EU-consumers (JPI-HDHL, H2020)

Food Policy Environment
Social Environment

Consumer
why & what do we eat,
how does it affect health?

public
private
Agrofood sector

public
private
Health sector

Societal challenges:
Food security, safety,
sustainability, climate
change

- Biology & Behaviour
- Public – Private
- Connecting health and food (ESFRI working group)

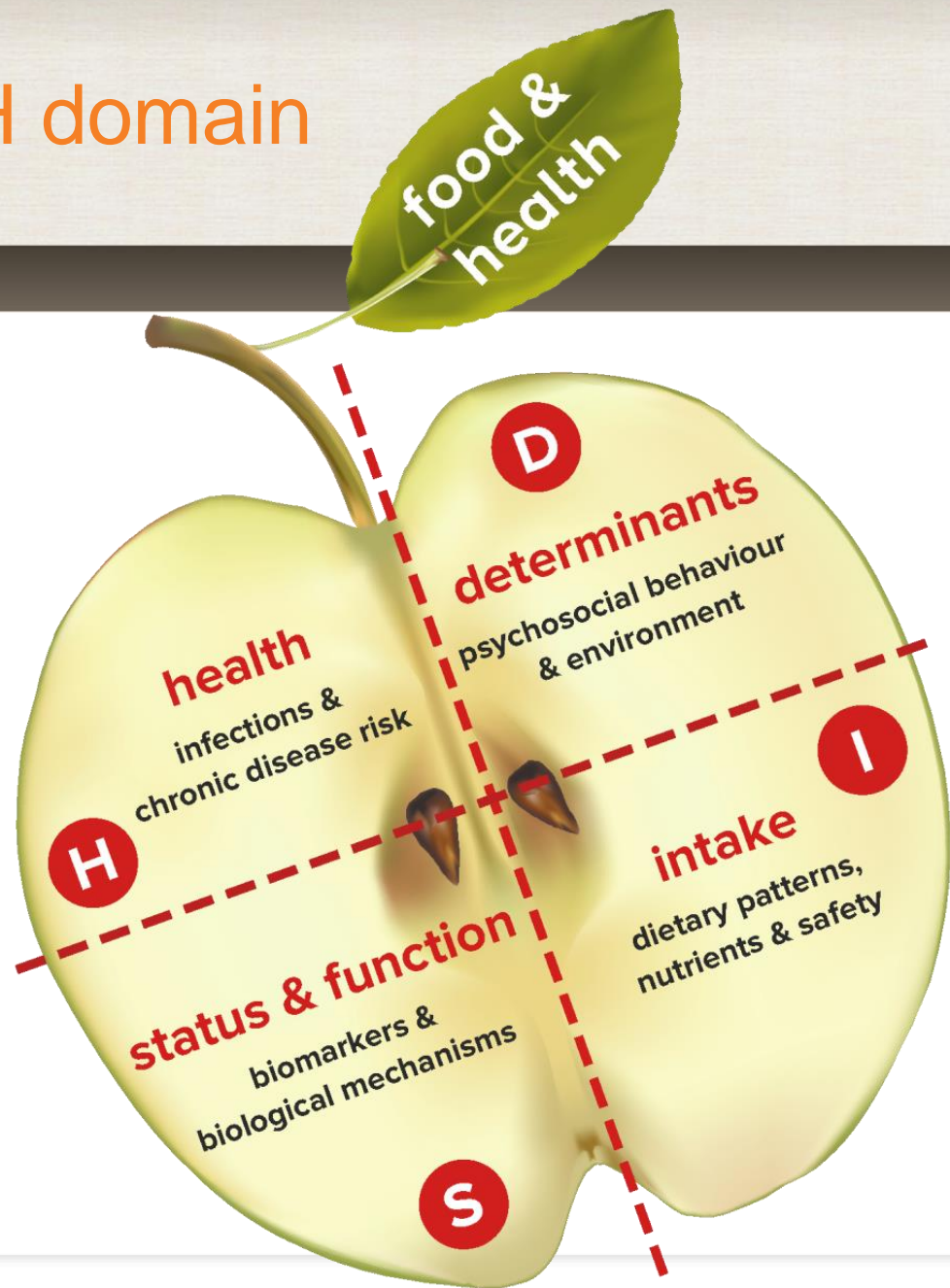
Societal challenges:
Health, demographic
change, and wellbeing



DISH domain

EuroDISH

'DISH' model:
4 key building
blocks of food
and health
research



Summary challenges and developments



EuroDISH

- Interdisciplinary societal challenges
 - H2020: Health, demographic change, and wellbeing
 - ESFRI: Connecting food and health
- Developments:
 - Technological ICT trend towards big data
 - Societal need for data integration (public health and interventions)
 - Developments in genetics. –omics , neuro-science

Big Data for Smart Food and Health Services



Food



Lifestyle



Health

RIs enable adequate response to the scientific & societal challenges!



EuroDISH

Help to shape scientific communities:

Attract young people to science & attract the best researchers from around the world,

Build bridges between national research communities and scientific disciplines via users from different countries

Education

Research Infrastructures
(centre of knowledge triangle)

Unique research services, facilities, resources and related services

'single-sited', 'distributed', 'virtual'

scientific discoveries & technological development

Research

ESFRI – Strategic Working Group Health & Food

Innovation



EuroDISH

Determinants • Intake • Status • Health

Studying the need for **food** and **health**
research infrastructures in **Europe**

The EuroDISH project

Objectives and scope of the project



Krijn Poppe

Studying the need for food and health research infrastructures in Europe

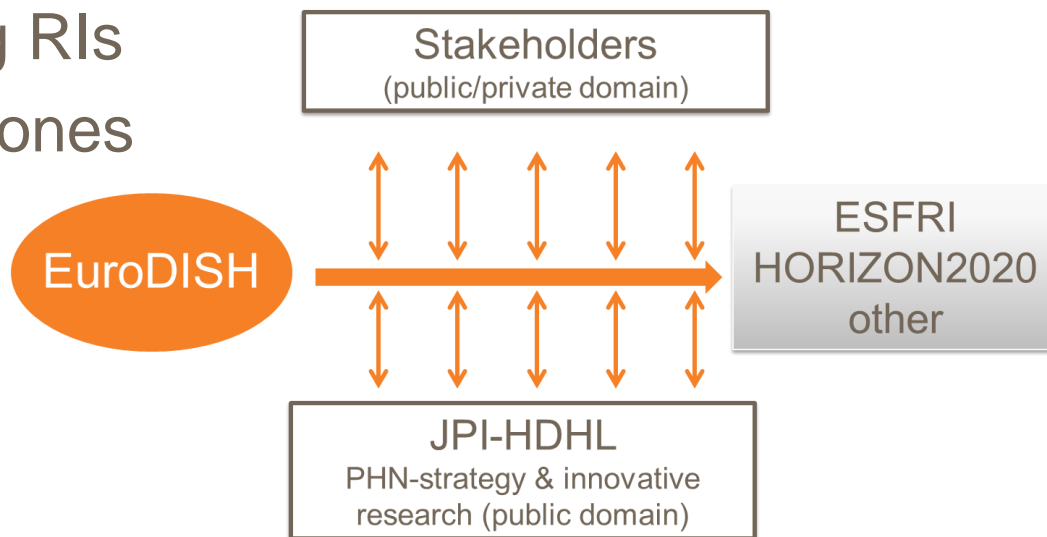
www.eurodish.eu



Objective of EuroDISH

To provide **advanced and feasible recommendations on the NEEDS for food and health RIs** to ESFRI and other stakeholders in terms of:

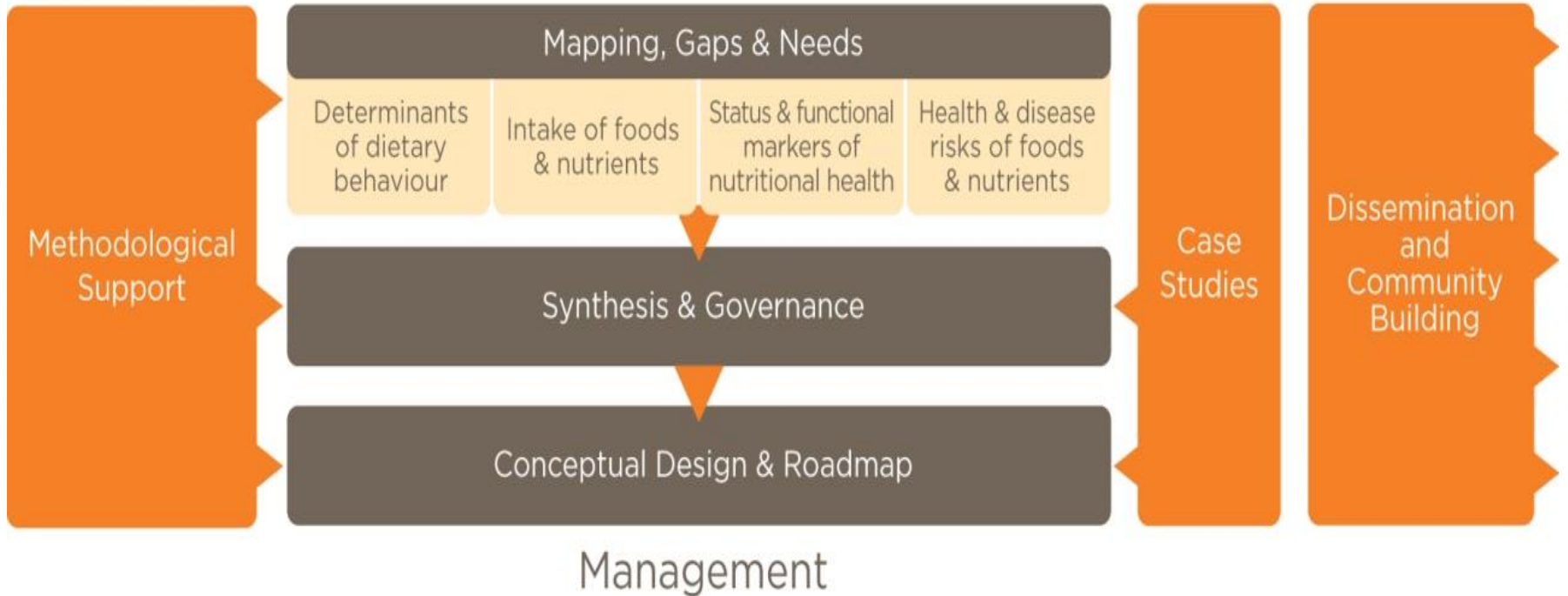
- integration of existing RIs
- development of new ones





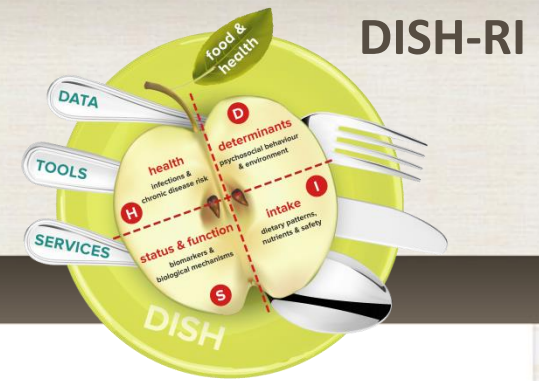
Structure & interrelationships between WPs

Stakeholder Interaction





EuroDISH



Thank you for your attention!

Krijn.poppe@wur.nl

Grant no 311788-CSA-SA

- Expo Milano, May 15th 2015