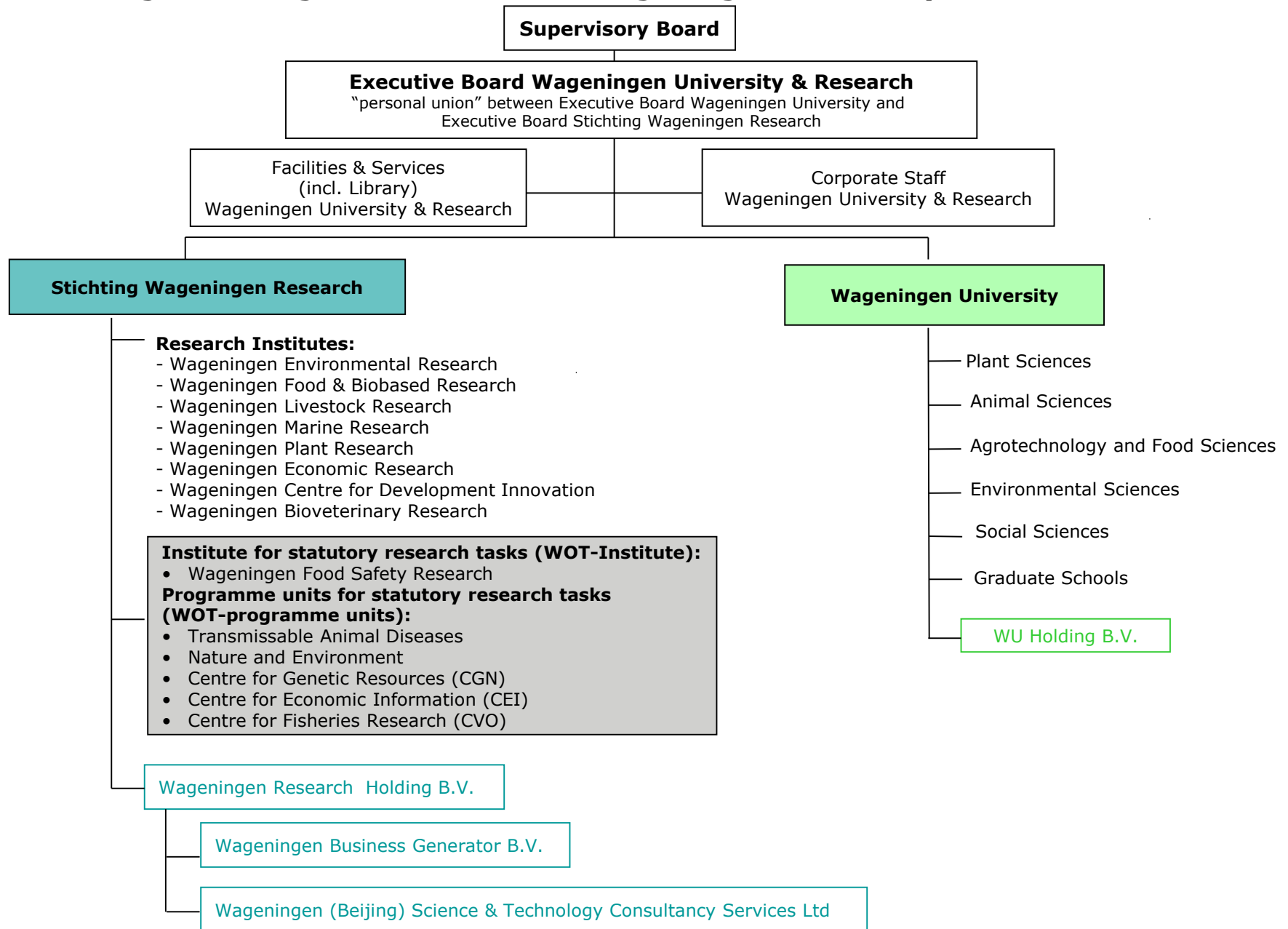


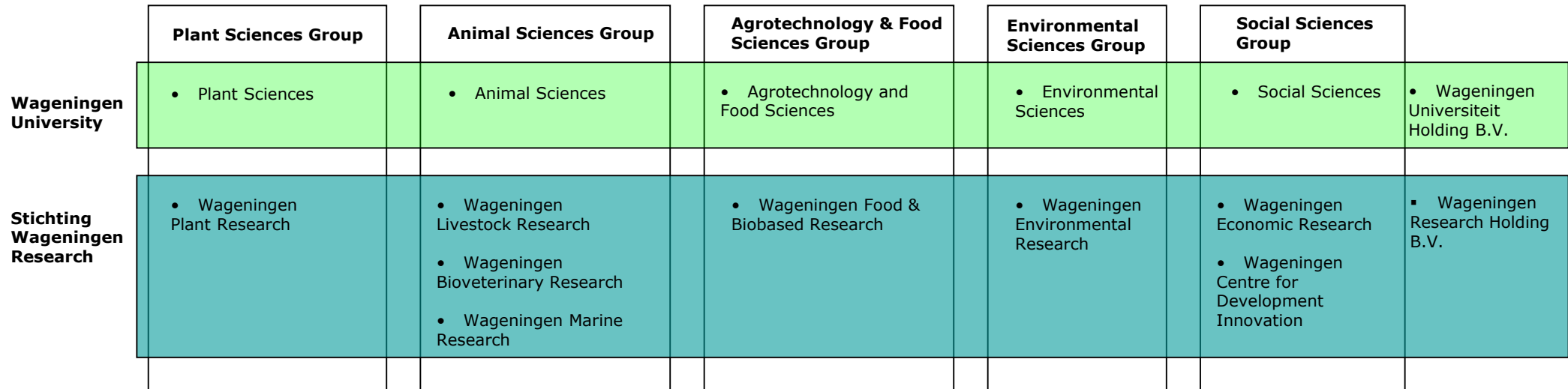
Legal and Organizational Chart Wageningen University & Research



Executive Board Wageningen University & Research

“personal union” between Executive Board Wageningen University and Executive Board Stichting Wageningen Research

Sciences Groups Wageningen University & Research



Participations and other affiliations
June 2019

Legal Entity	Participation in:	Percentage
Stichting Wageningen Research	Wageningen Research Holding B.V.	100%
Wageningen Research Holding B.V.	Wageningen Business Generator B.V.	100%
	Wageningen (Beijing) Science & Technology Consulting Services Ltd.	100%
Wageningen Business Generator B.V.	Exploitiemaatschappij Windmolenparken Lelystad (EWL) B.V.	100%
	Windmolenpark Mammoethocht B.V.	100%
	Windmolenpark Neushoorntocht B.V.	100%
	Covaccine B.V.	25%
	Isolife B.V.	5%
	Dutch Greentech Fund B.V.	4,76%
	Agri New Ventures B.V. ↳ 50% partnership in: VOF Oostwaardhoeve (VOF OWH)	100%
	Fresh Forward Holding B.V. ↳ 100% participation in Fresh Forward Breeding B.V. ↳ 100% participation in Fresh Forward Marketing B.V.	49%
Wageningen University	Wageningen Universiteit Holding B.V.	100%
Wageningen Universiteit Holding BV	Bio-Product B.V.	5%
	Green Dino B.V.	11,40%
	Ceradis B.V.	1,6%
	Spinterest B.V.	100%
	A-Mansia Biotech S.A.	4,28 %
	Caribou Biosciences Inc. (Delaware)	0,85%
Other affiliations	Stichting Expat Center Food Valley	
	Stichting Preduza (Proyecto Resistancia Duradera en la Zona Andina)	
	Coöperatie Innovation Industries Fund U.A.	
	Coöperatie Shift Invest U.A.	
	Stichting ISRIC	
	Amsterdam Institute for Advanced Metropolitan Solutions (AMS Institute)	