

Setting up the WUR-printer on Linux

Introduction

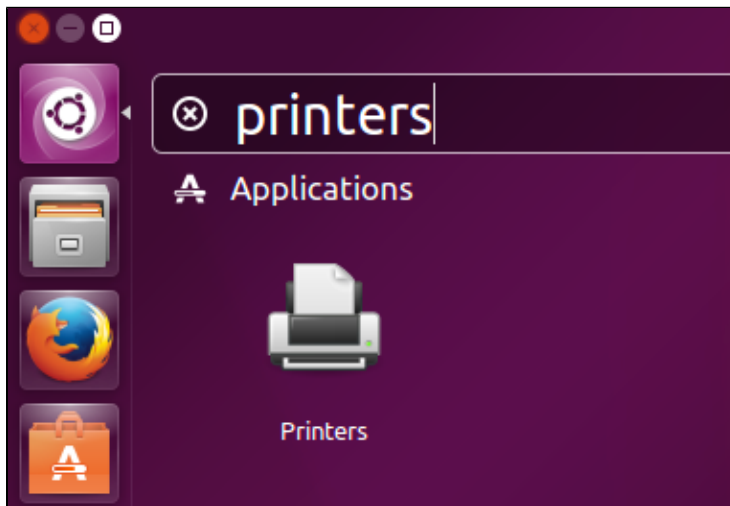
To be able to print from your own (private) computer to the WUR multifunctional printer queue, the WURprinter needs to be installed. In these instructions we will explain what actions have to be taken. Please note, these instructions are provided only for informative purpose without additional support from us. They have been compiled with Ubuntu 16.04 LTS. On your machine, the windows contents may vary with what is presented here. We cannot guarantee it will be functional on your machine – following these instructions is fully at your own risk.

Requirements

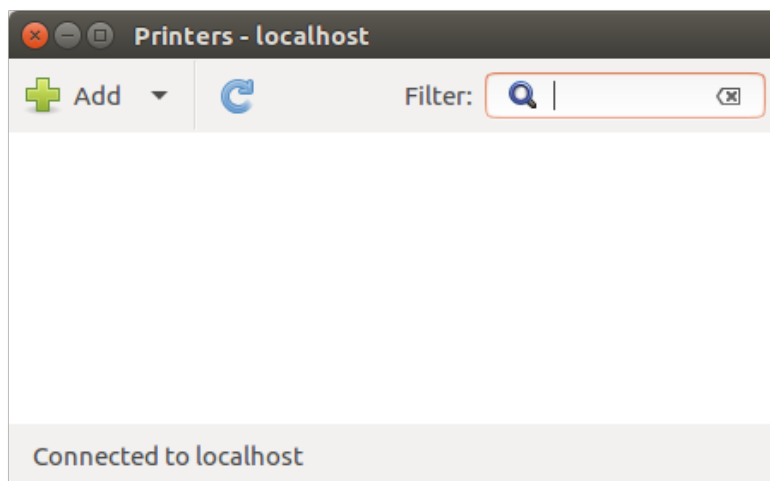
- An established network connection with wur-user, eduroam or by cable.
- A valid WURnet-account. This is your employee or student username with an associated password.
- For employees and students: a WUR-card with sufficient credit.

Guide

- Click on the Ubuntu icon in the upper-left corner and search '**Printers**'.



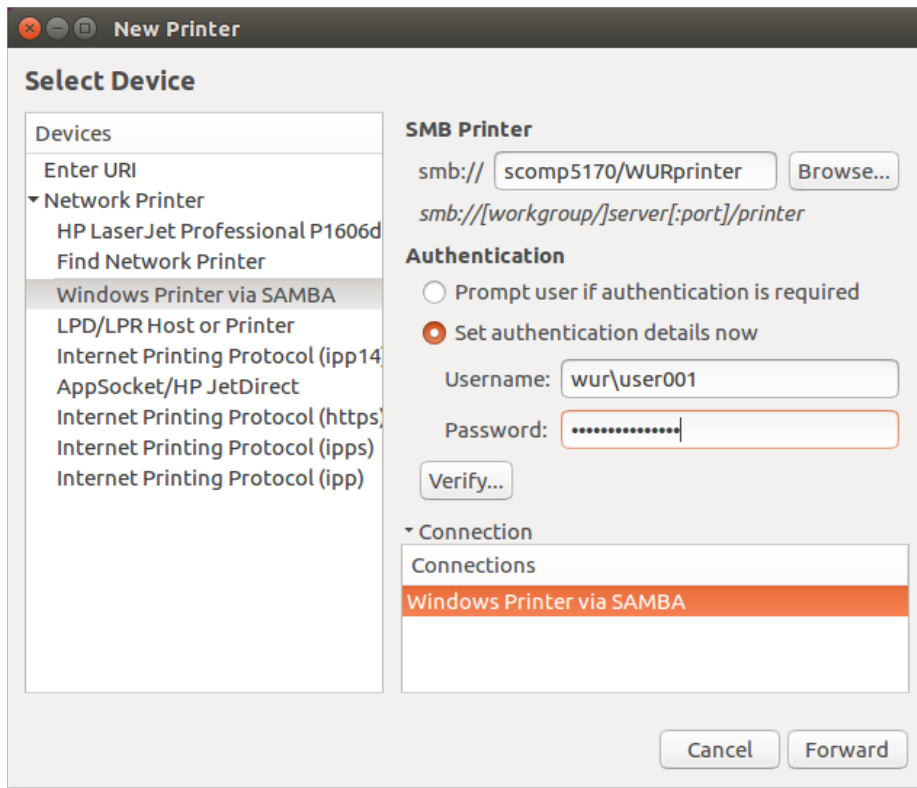
- Click on the '**Add**' button



- In the left column select '**Windows Printer via SAMBA**'
 - Enter the following text: **scomp5170/WURprinter** in field marked **smb://**
 - Select '**Set authentication details now**'
 - Fill in your wur account (with leading domain): **wur\user001**
 - Enter you password: *********

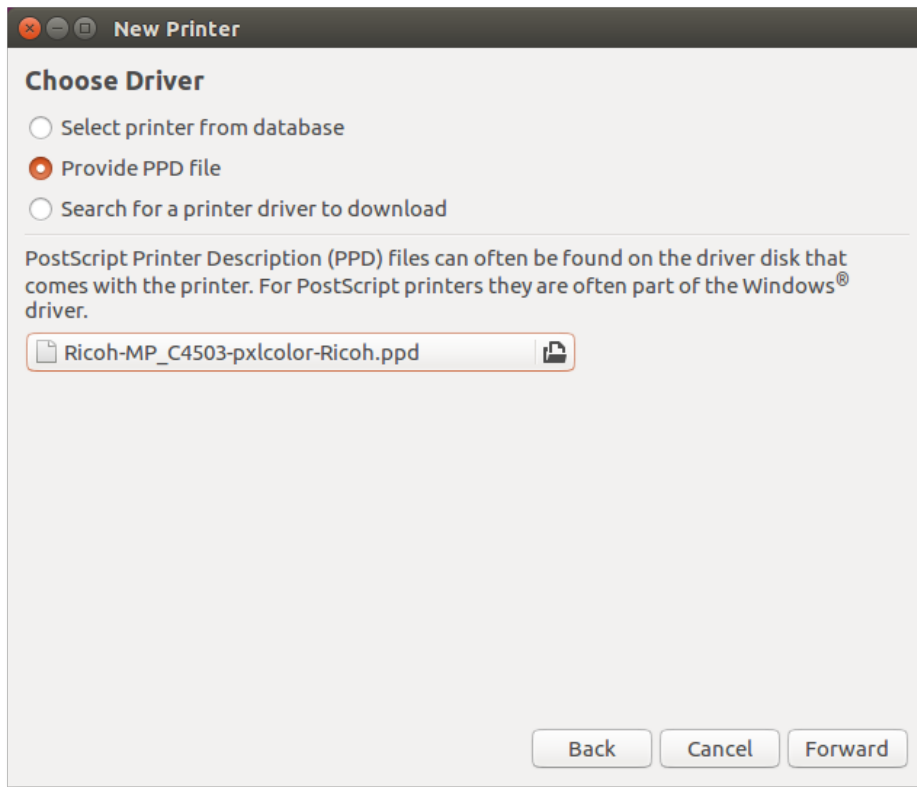
Remember:
If you account's password changes, you need to change it here as well.

- Click on the '**Forward**' button

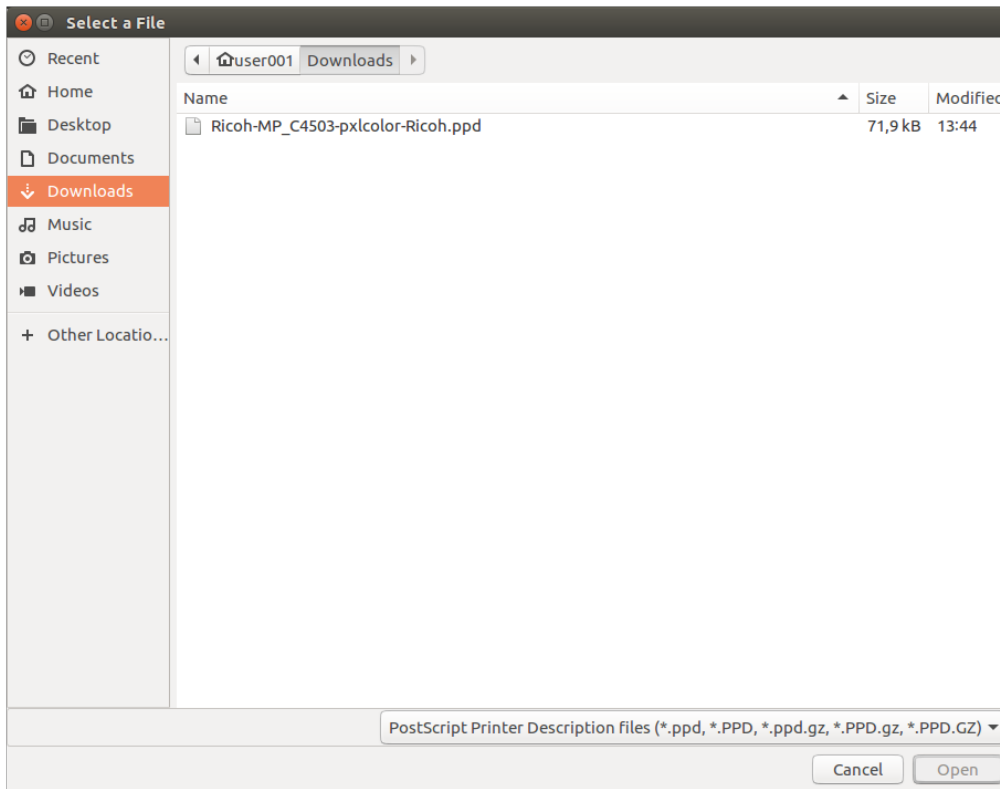


It will search for the driver which is not present in Linux by default:

- Obtain the driver from http://www.openprinting.org/ppd-o-matic.php?driver=pxlcolor-Ricoh&printer=Ricoh-MP_C4503&show=0
- Download the file and save it to your downloads.
- Click on '**Provide PPD**' and click on the folder icon



- Browse to the file and click on 'Open'



If needed you can change the Tray-settings. The default settings 'not installed' are functional.

- Click on 'Forward'.
- And on the screen below, click 'Apply'.

New Printer

Describe Printer

Printer Name
Short name for this printer such as "laserjet"

WURprinter

Description (optional)
Human-readable description such as "HP LaserJet with Duplexer"

WURprinter

Location (optional)
Human-readable location such as "Lab 1"

Back Cancel Apply

- Click on **"Print Test Page"** to print a test page. Your print job is then submitted and directly handled.

? Would you like to print a test page?

Cancel Print Test Page

When the print queue is empty, your printjob is on the printserver waiting to be printed.

Document Print Status (WURprinter)

Close

Job	User	Document	Printer	Size	Time submitted	Status
processing / pending: 1 / 0						

To print from an application, select the **WURprinter** from the list and use your WUR-card to retrieve the print from your nearest WUR printer.