

Setting up a manual Wireless connection with Windows 7



Introduction

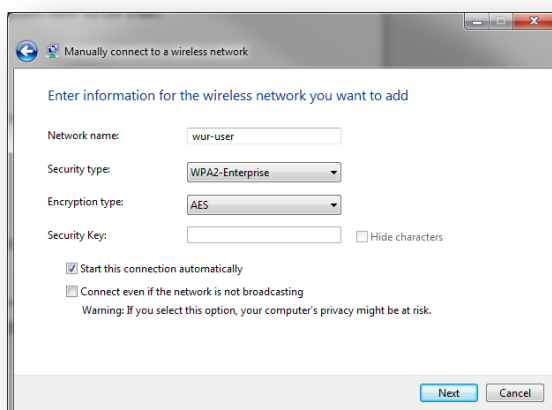
This instruction will give you some information how to connect your own computer to the Wireless network of Wageningen UR. These instructions will explain how to do that.

Requirements

- A WURnet-account. This is your employee or student account with associated password.
- Make sure your wireless network card is switched on.

Guide

- Click Start - Control Panel - Network and Internet - Network and Sharing Center and select **“Set up a new connection or network”**.
 [Set up a new connection or network](#)
Set up a wireless, broadband, dial-up, ad hoc, or VPN connection; or set up a router or access point.
- Select **“Manually connect to a wireless network”** and click next.
 [Manually connect to a wireless network](#)
Connect to a hidden network or create a new wireless profile.
- In the Network name type **“wur-user”** and select **“WPA2-Enterprise”** as security type.



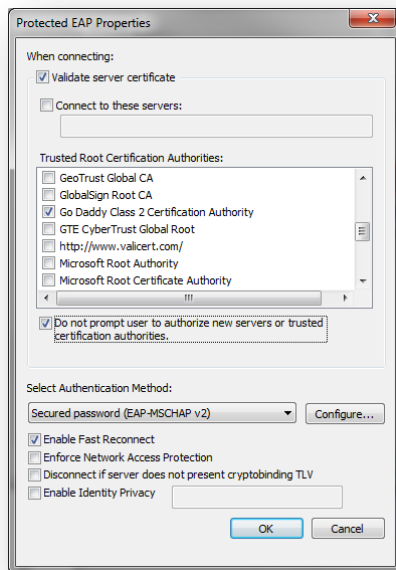
- Click Next.
- You successfully added the wur-user connection

Successfully added wur-user

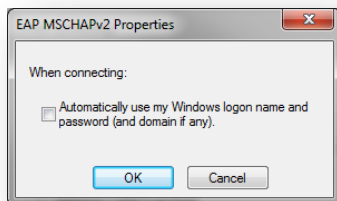
 [Change connection settings](#)
Open the connection properties so that I can change the settings.

- Click **“Change connection settings”**.



- Click on the Security Tab.
- Make sure that EAP (PEAP) is selected in the “network authentication method” and choose Settings.
- In the “Protected EAP Properties” screen mark “Go Daddy Class 2 Certification Authority” and click OK.



- Click “Configure”



- Unmark “Automatically use ...” and click OK > OK > OK > Close

You are now connected to WUR wireless network, the wireless network indicator should change from  to . See <http://www.wageningenur.nl/connectivity> for frequently asked questions (FAQ) and other information.