

**Tree factsheet**

images at page 3 and 4

***Juniperus communis* Linnaeus**

<b>taxonomy</b>	
author, year	Linnaeus 1753
synonym	-
Family	Cupressaceae
Eng. Name	Common juniper
Dutch name	Jeneverbes (Boom, 2000; Heukels' Flora, 2005)
subspecies	-
varieties	<i>J. communis</i> L. var. <i>communis</i> <i>J. communis</i> L. var. <i>depressa</i> <i>J. communis</i> L. var. <i>megistocarpa</i> <i>J. communis</i> L. var. <i>nipponica</i> <i>J. communis</i> L. var. <i>saxatilis</i>
hybrids	-
cultivars, frequently planted	'Columnaris' ; park and garden tree 'Hibernica' ; garden tree 'Repanda' ; garden tree
<b>references</b>	Earle, C.J. Gymnosperm database. <a href="http://www.conifers.org">www.conifers.org</a> Weeda et al. 2003. Nederlandse Oecologische Flora deel 1 Plants for a Future Database; <a href="http://www.pfaf.org/index.html">www.pfaf.org/index.html</a>
<b>morphology</b>	
crown habit	pyramidal to depressed
max. height (m)	Europe: 9 The Netherlands: 6
max. dbh (cm)	40?
actual size Europe	?
actual size Netherlands	30
leaf length (cm)	0,5-1,5
leaf petiole (cm)	0
leaf colour upper surface	grey stomatal bands
leaf colour under surface	grey stomatal bands
leaves arrangement	3 in a whorl
flowering	May-June
flowering plant	dioecious
flower	monosexual
flower diameter (cm)	0,1
pollination	wind
fruit; length	cone-berry; 0,5-0,8 cm
fruit petiole (cm)	0,1-0,2
seed; length	pip; 0,4-0,5 cm
seed-wing length (cm)	-
weight 1000 seeds (g)	10
seeds ripen	September-November next year
seed dispersal	birds, esp. <i>Turdus pilaris</i> (Dutch: Kramsvogel)

<b>habitat</b>	
natural distribution	Northern Hemisphere
in N.W. Europe since	11.000 BC
natural areas The Netherlands	indigenous
geological landscape types The Netherlands (Hoek 1997)	drift sand area, coversand area, ice-pushed ridges
forested areas The Netherlands	sandy soils; former heath fields
area Netherlands	1600 ha (inventory Goudzwaard)
% of forest trees in the Netherlands	<1%
soil type	indifferent
pH-KCl	4-7
soil fertility	poor to medium rich
light	light demanding
① shade tolerance (0=no tolerance to 5=max. tolerance)	1.7
① drought tolerance (0=no tolerance to 5=max. tolerance)	4.4
① waterlogging tolerance (0=no tolerance to 5=max. tolerance)	2.1
plant communities in the Netherlands	Vaccinio-Piceetea (klasse der naaldbossen): -Dicrano-Juniperetum – Gaffeltandmos-Jeneverbesstruweel Rhamno-Prunetea (klasse der doornstruwelen): -Roso-Juniperetum – Associatie van Hondсроos en Jeneverbes
<b>management</b>	
status Europe	infrequent (locally frequent) indigenous species in forests and urban environment
status The Netherlands	infrequent indigenous species in forests and heath fields
application	nature tree, ornamental tree
propagation	seed, cuttings
regeneration	natural regeneration
optimal gap size for regeneration	2x tree length
first plantation Netherlands	-
resprouting after cutting	no
growth rate (M.A.I. in m <sup>3</sup> ha <sup>-1</sup> j <sup>-1</sup> )	very slow, < 1
diseases	no important parasitic fungae
insects	<i>Monoctenus juniperi</i> - Juniper sawfly – (Jeneverbes-bladwesp) <i>Pitedia juniperina</i> – Juniper shieldbug - (Jeneverbeswants)
<b>wood</b>	
wood	Common juniper (jeneverbes-hout); not a timber trade species
wood structures key characteristics of pores	No resin canals. Parenchyma cells with brown substances in the heart-wood
density heartwood (kg/m <sup>3</sup> )	500-700
elastic modulus (N/mm <sup>2</sup> )	-
durability heartwood	fungus 2 ( <i>Juniperus procera</i> )
heartwood colour	red-brown
sapwood colour	white
contents	
products	small parts for turnery, furniture-parts
<b>non-timber products</b>	
berries	raw edible; used in jenever-liqueur; contain oil for medical purposes
branches and berries	for smoking ham

① Ülo Niinemets and Fernando Valladares. 2006. Tolerance to shade, drought, and waterlogging of temperate Northern Hemisphere trees and shrubs. Ecological Monographs 76:521–547



Juniper scrub in Mantingerzand, Drenthe  
photo ©Joel Burny



old tree showing fastigate habitus, Loenen,  
Veluwe. photo ©Leo Goudzwaard



old trees showing other habitus types, Loenen, Veluwe



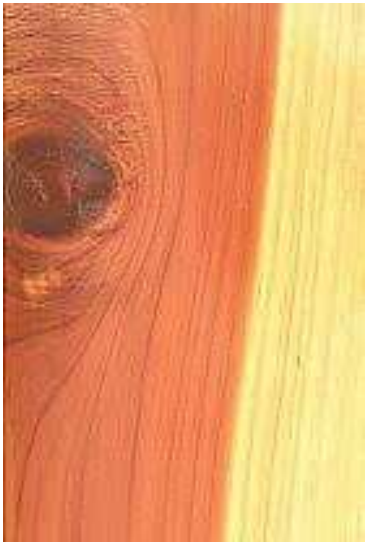
and at Mantingerzand, Drenthe  
photo's 2x ©Leo Goudzwaard, Wageningen University



three year old sapling, Loenen, Veluwe  
photo's 2x ©Leo Goudzwaard, Wageningen University



cone-berries and leaves



Juniper heart-wood and sap-wood  
photo ©Chris Sonnemans