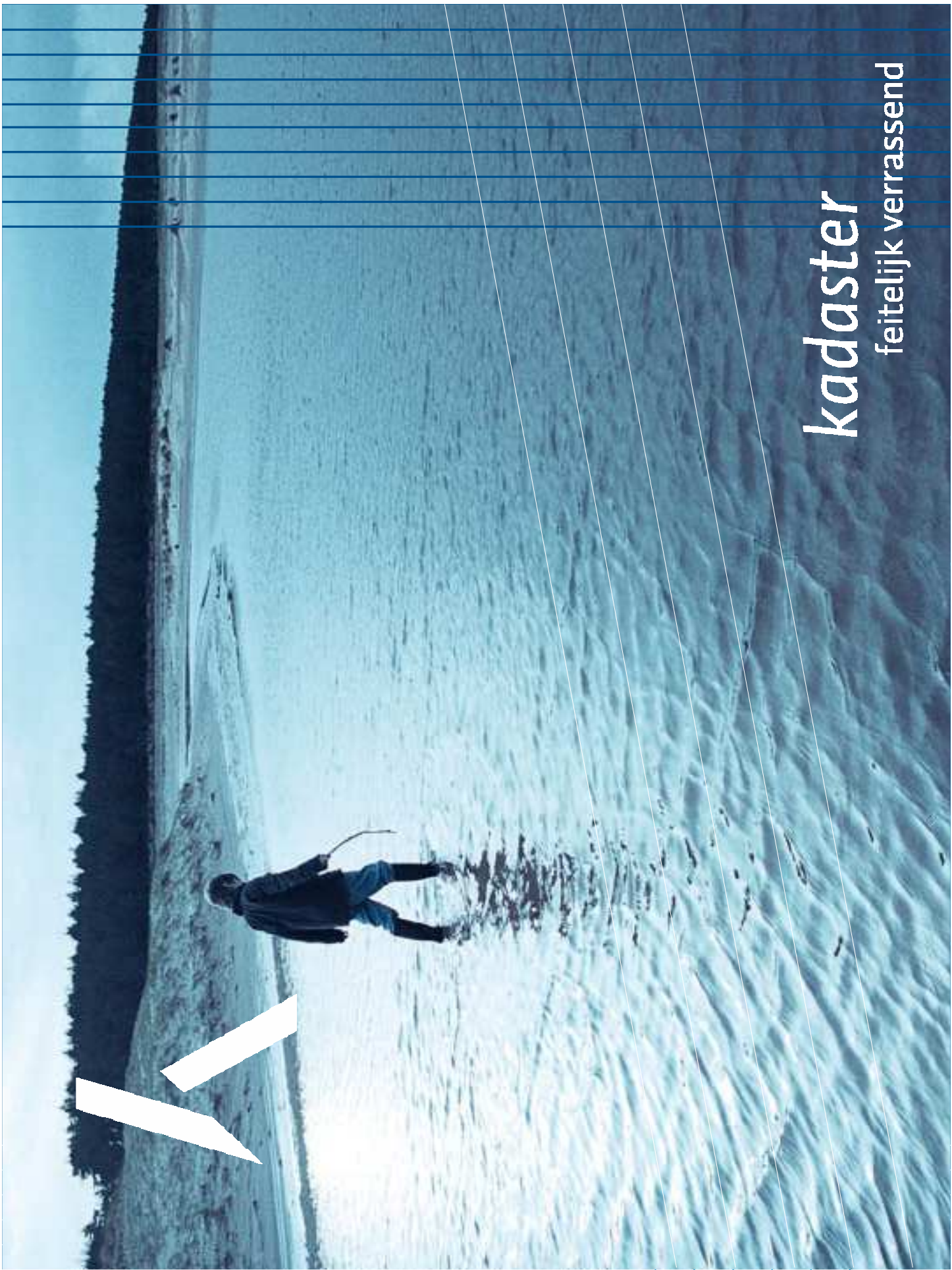




kadaster

feitelijk verrassend



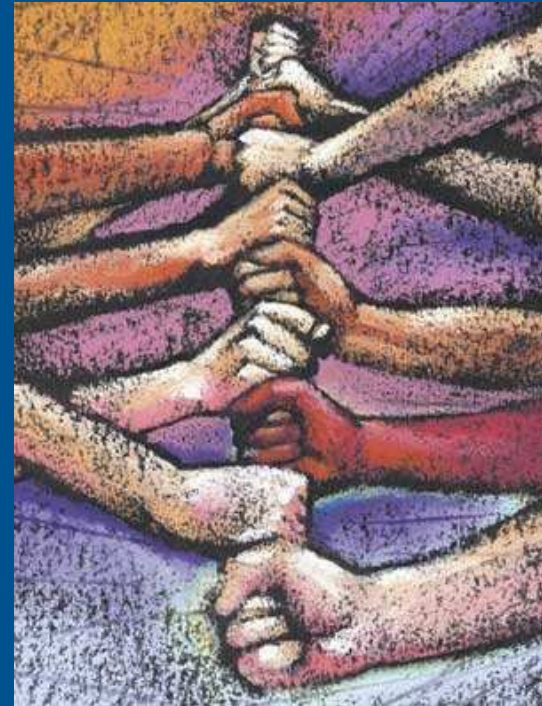


Quality management in Dutch SDI

kadaster
feitelijk verrassend

Contents

- Kadaster in a few words
- Backgrounds
- Assessing SDIs
- INK chain assessment
- Results first session



kadaster

Kadaster

- Cadastre, Land Registry and Mapping agency
- Currently developing into geo-node
 - Public restrictions
 - Buildings & addresses
 - Cables and pipelines
- Supporting the development of NSDI
- 175th anniversary

kadaster



kadaster

Backgrounds

Lack of coordination within GI-field



Dutch government established GI-council;

a board of governmental key players within GI-field



Currently defining size and nature of the GI-field

Assessing SDIs

Happy families are all alike;
every unhappy family is unhappy in its own way

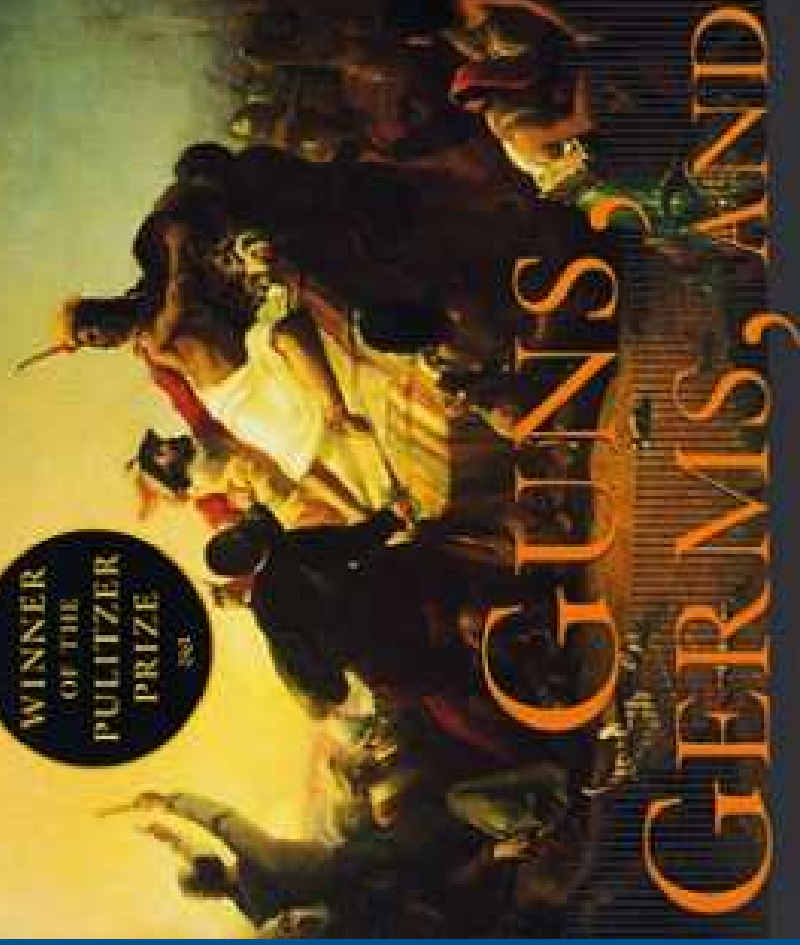
Anna Karenina
Tolstoj

kadaster

NATIONAL BESTSELLER

"The scope and the explanatory power of this book are astounding." —*The New Yorker*

WINNER
OF THE
PULITZER
PRIZE



GUNS, AND GERMS, AND STEEL

The FATES of HUMAN SOCIETIES

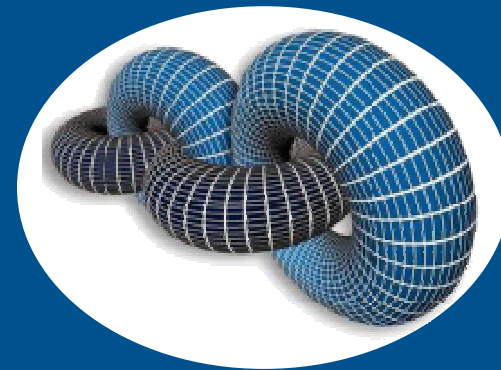
JARED DIAMOND

AUTHOR OF *THE THIRD CHIMPANZEE*

kadaster

Assessing SDIs

- SDI is: data, systems, infrastructure, standards...
... But also: cooperation between organisations
- Coordinate SDI developments using management science
- Use commonly used models, not GI specific ones
- Use EFQM model (for quality management) to analyse the cooperation within the chain



kadaster

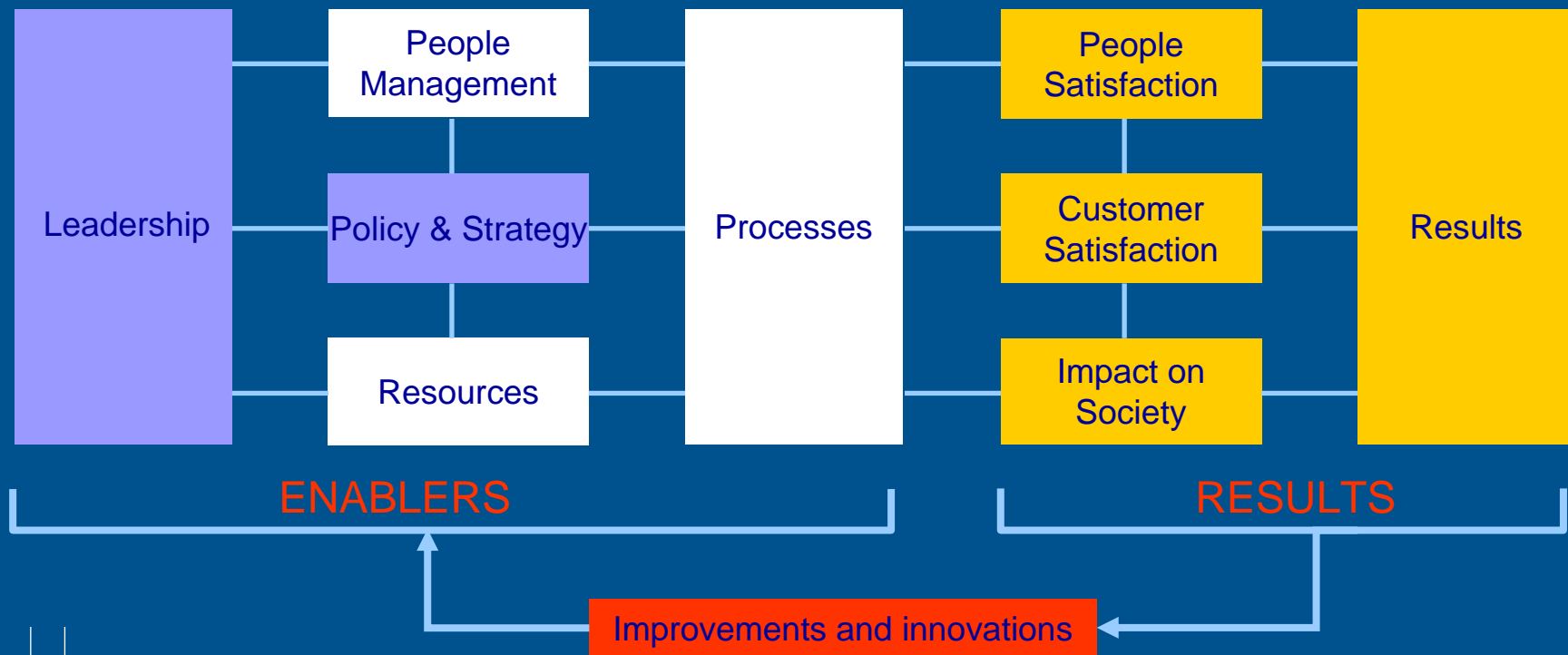
Cooperate!



Sometimes collaboration is vital!

kadaster

EFQM / INK model



Approach

- Responsible: GI - council
- Facilitator: Kadaster
- Method: INK – chain model; extension to regular INK model

- Pragmatic approach using 3 cases
- Different fields of geo-information, different participants, different 'customers'

Results:

- Lessons-learned per case
- General results for view on Dutch SDI

- Report to the GI-council in september

Results first session (15th of May)

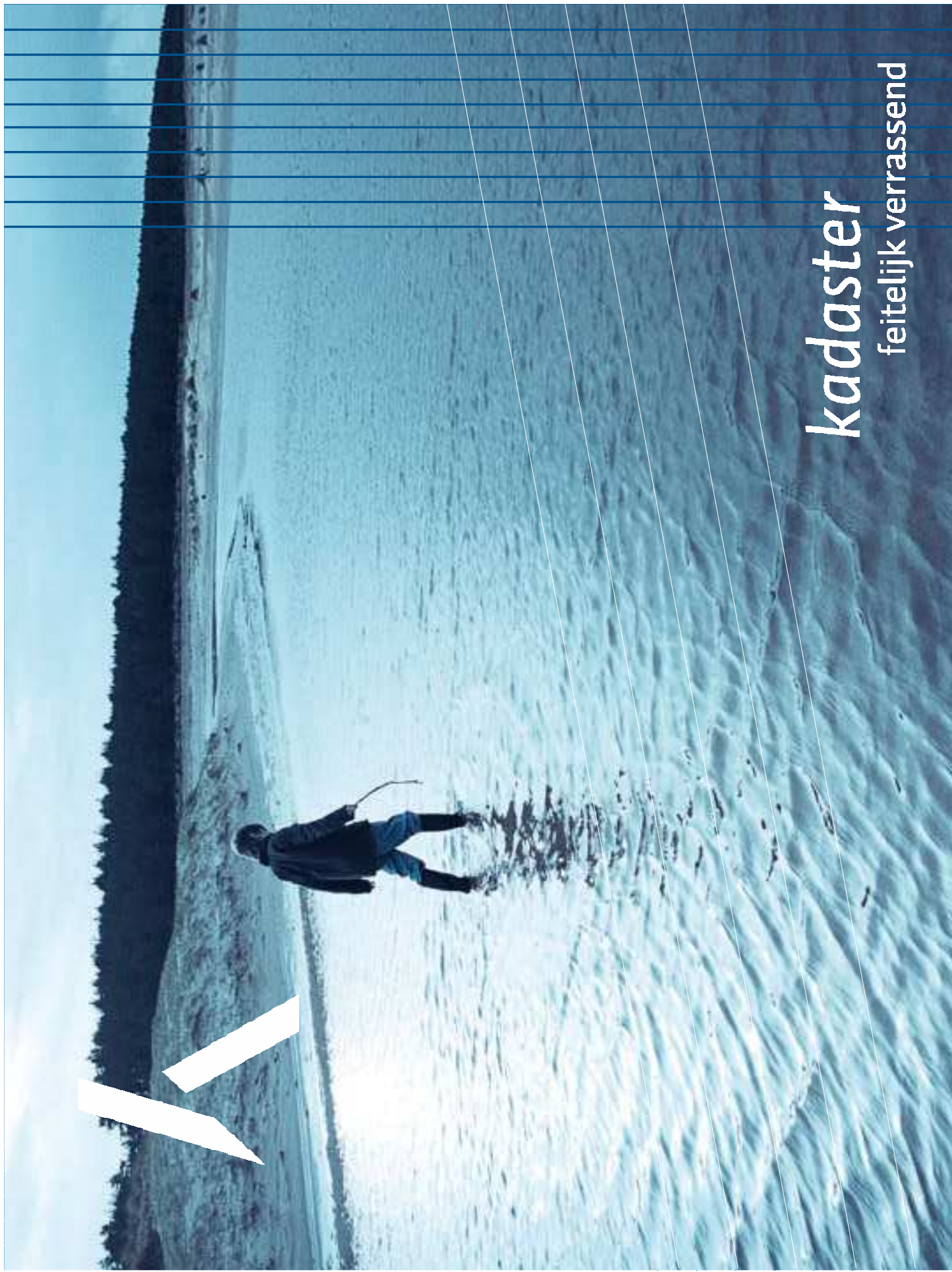


- Huge willingness to cooperate
- Share of different focus / aims of organisations within the chain
- Clear focus on the goals of the chain instead of goals of the organisations catalysed cooperation



kadaster

feitelijk verrassend



NSDI=

- (network) organisation
- that makes products and services
- for clients

So:

- Organisational assesment
- Quality assesment
- User satisfaction

- Internationally comparable (benchmarking)