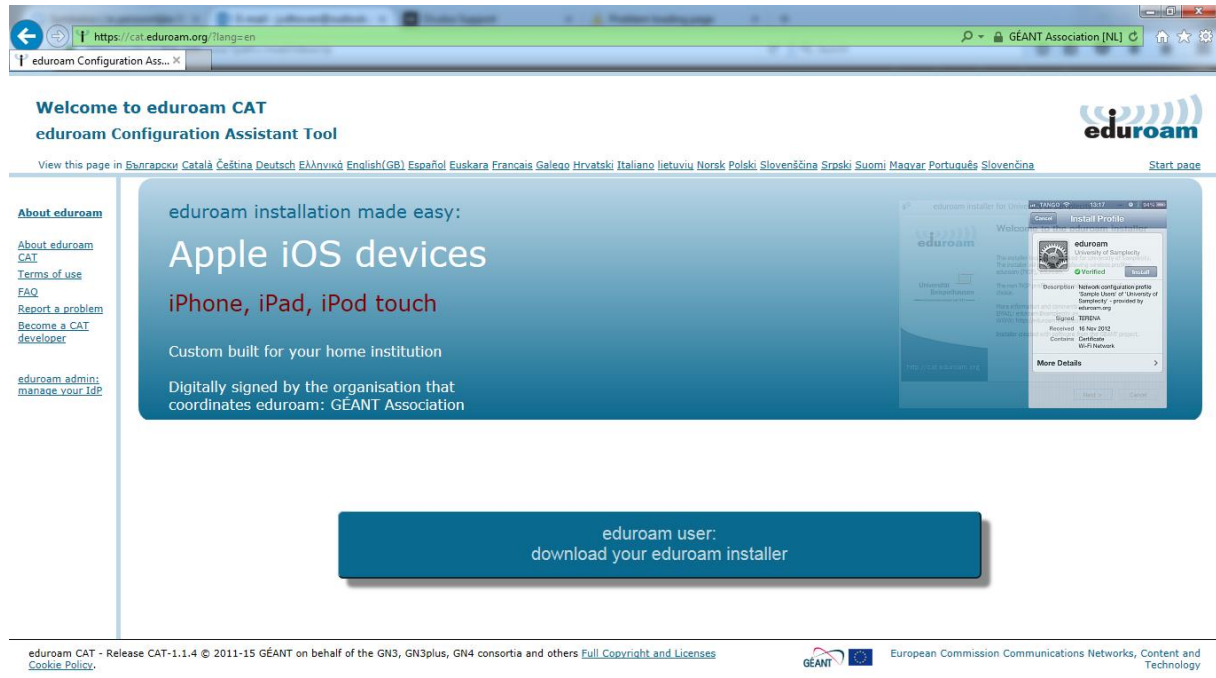


Having issues connecting to our wireless network wur-user or eduroam?

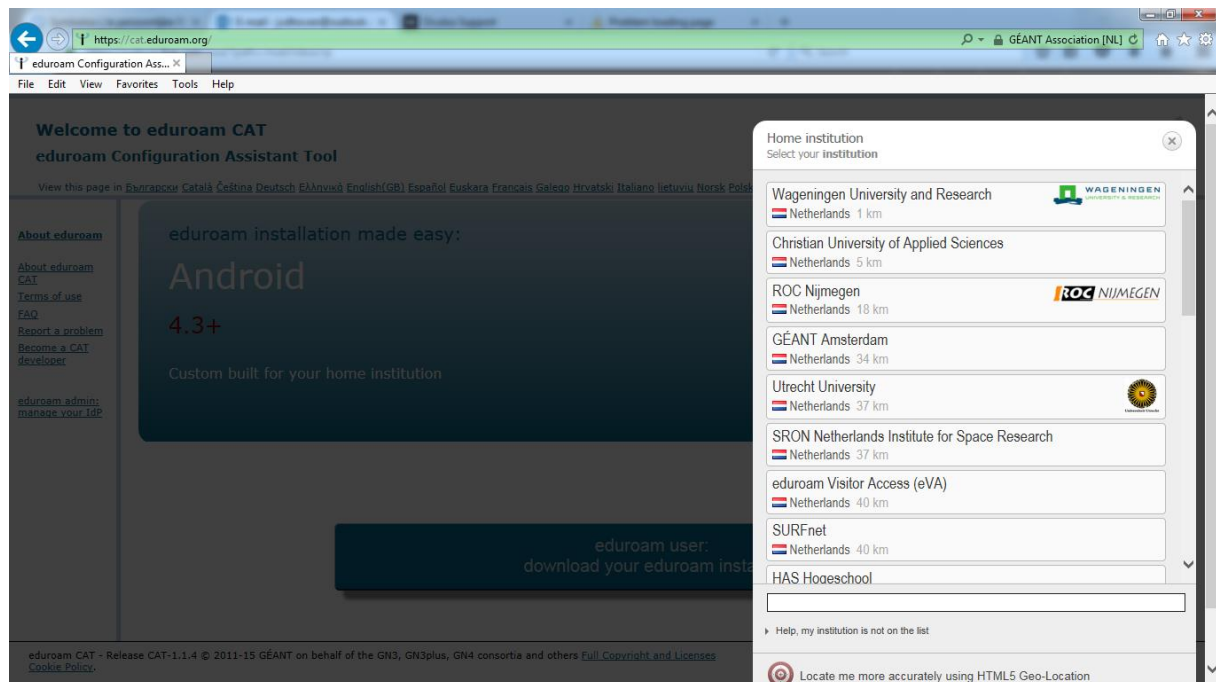
Connect your laptop to a wired network connection and follow the steps below:

Open <https://cat.eduroam.org/>

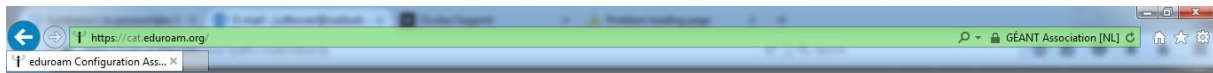


Choose your language

Click on the button "eduroam user: download your eduroam installer"



Click on "Wageningen University and Research"



Welcome to eduroam CAT eduroam Configuration Assistant Tool



View this page in [Български](#) [Català](#) [Čeština](#) [Deutsch](#) [Ελληνικά](#) [English\(GB\)](#) [Español](#) [Euskara](#) [Français](#) [Galego](#) [Hrvatski](#) [Italiano](#) [lietuvių](#) [Norsk](#) [Polski](#) [Slovenščina](#) [Srpski](#) [Suomi](#) [Maqyar](#) [Português](#) [Slovenčina](#)

[Start page](#)

Selected institution: **Wageningen University and Research** [select another](#)

If you encounter problems, then you can obtain direct assistance from you home organisation at:

email: serviceesk.it@wur.nl
tel: 0317 4 88888



[All platforms](#)

eduroam CAT - Release CAT-1.1.4 © 2011-15 GEANT on behalf of the GN3, GN3plus, GN4 consortia and others [Full Copyright and Licenses](#)
[Cookie Policy](#)



Click "All platforms"



Welcome to eduroam CAT eduroam Configuration Assistant Tool



View this page in [Български](#) [Català](#) [Čeština](#) [Deutsch](#) [Ελληνικά](#) [English\(GB\)](#) [Español](#) [Euskara](#) [Français](#) [Galego](#) [Hrvatski](#) [Italiano](#) [lietuvių](#) [Norsk](#) [Polski](#) [Slovenščina](#) [Srpski](#) [Suomi](#) [Maqyar](#) [Português](#) [Slovenčina](#)

[Start page](#)

Selected institution: **Wageningen University and Research** [select another](#)

If you encounter problems, then you can obtain direct assistance from you home organisation at:

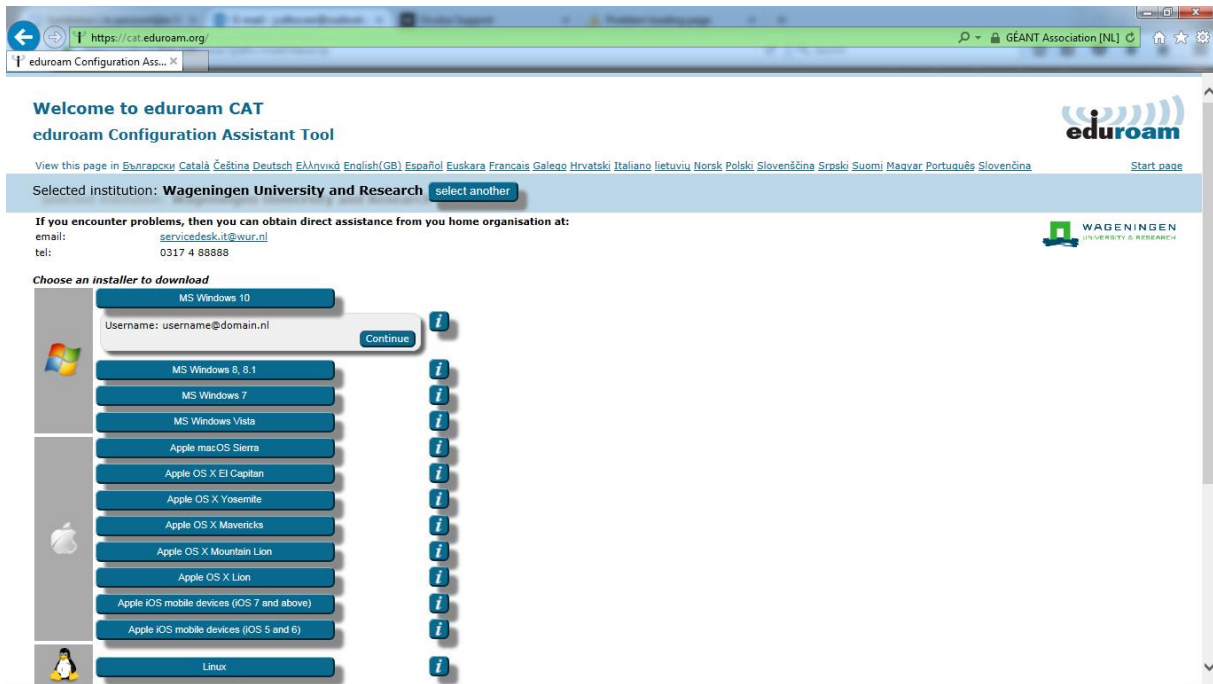
email: serviceesk.it@wur.nl
tel: 0317 4 88888



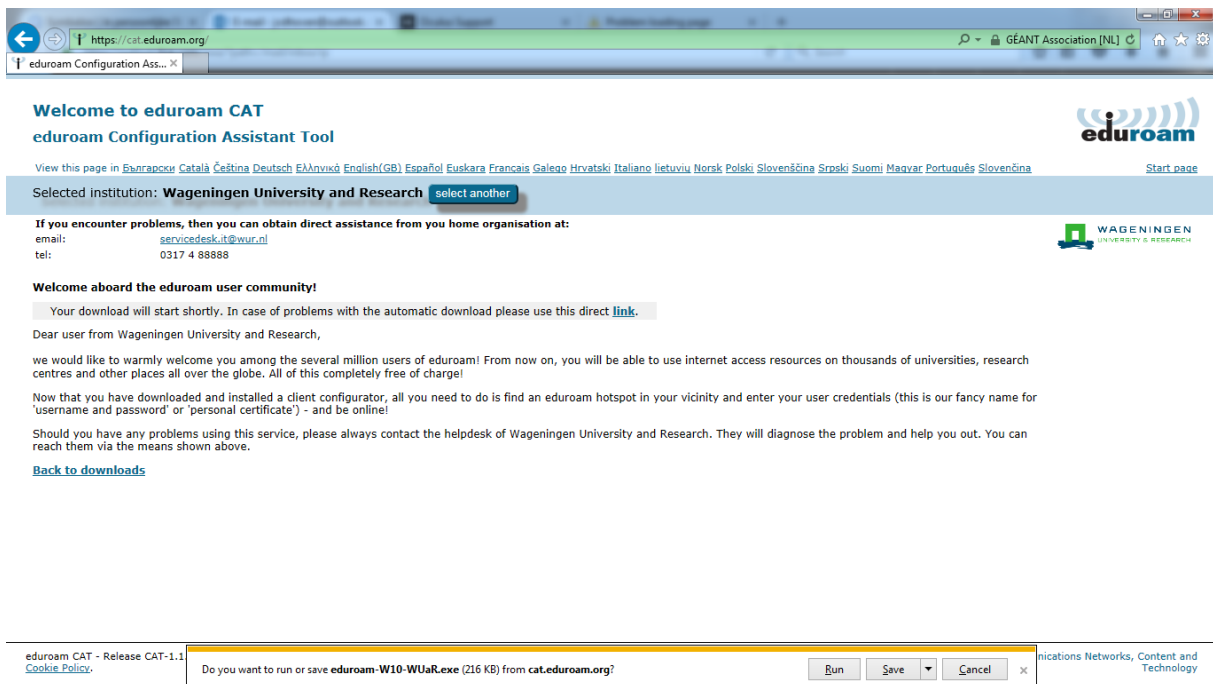
Choose an installer to download



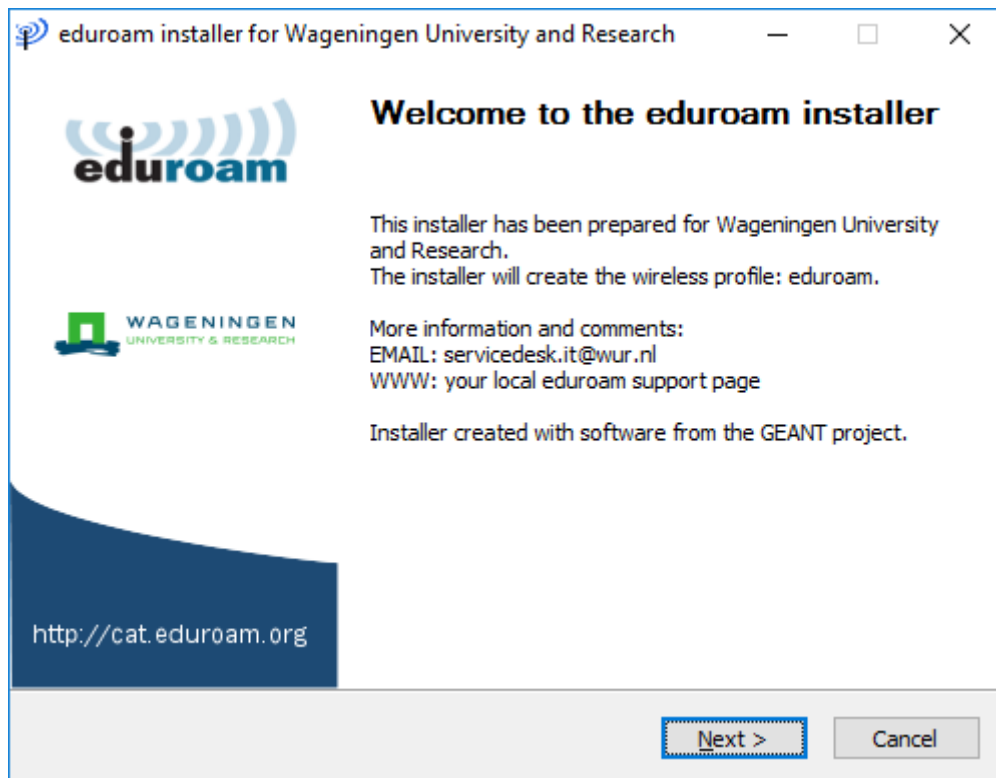
Choose the correct installer



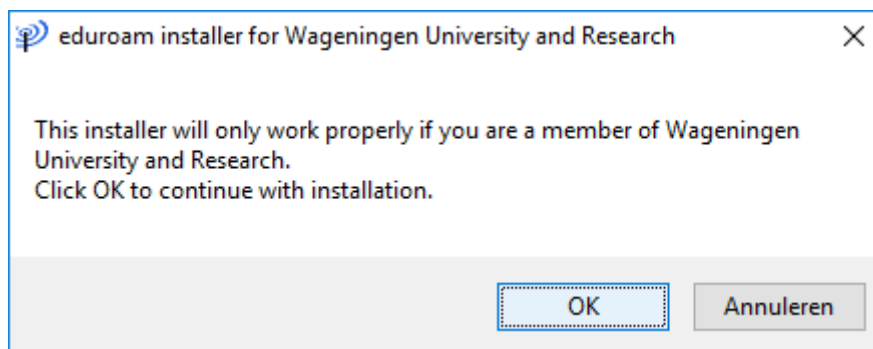
Click "Continue" to download the installer



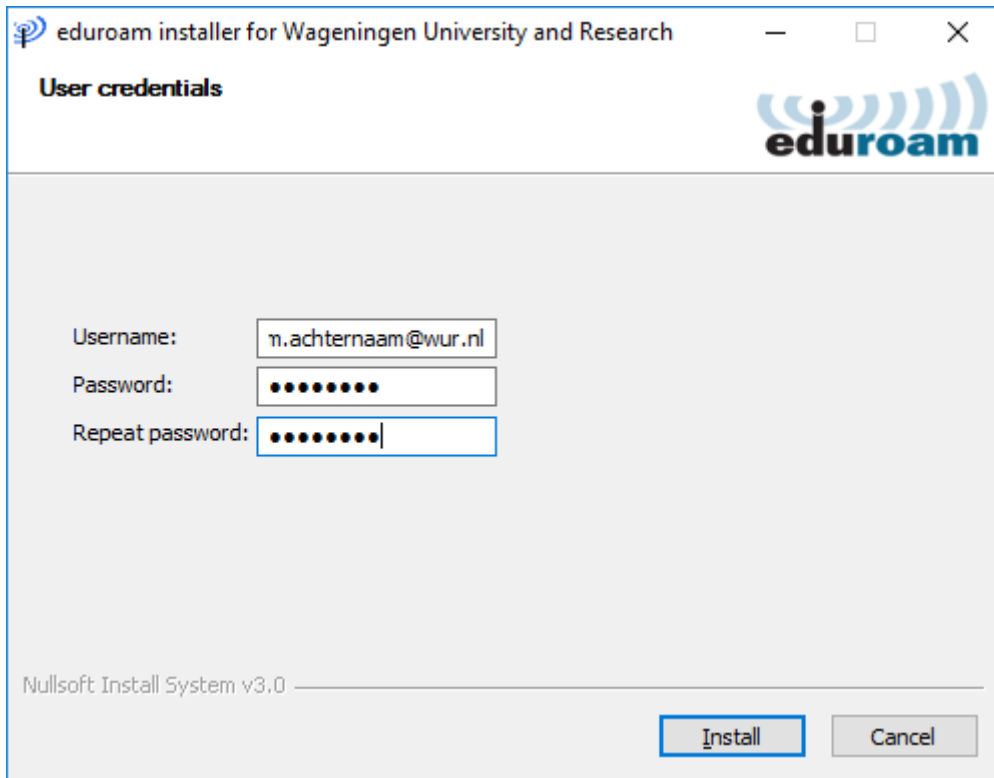
Click on the downloaded installer to start installation



Click Next

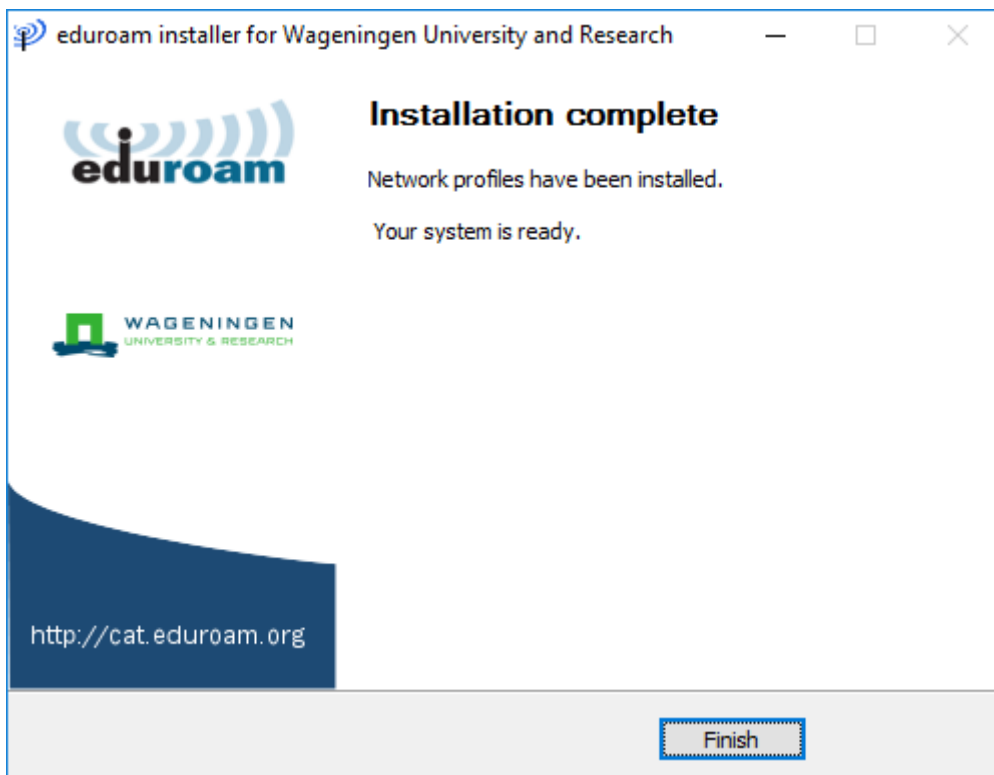


Click OK



Username: firstname.lastname@wur.nl
Password: your WUR password

Click Install



Click Finish

When you are on campus (or another EDUroam location anywhere in the world) you will be automatically connected to the EDUroam wireless network.