

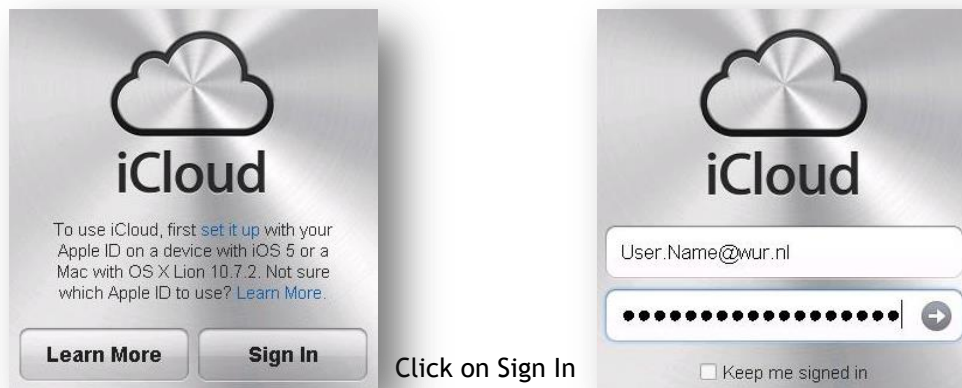
Find my iPad through the iCloud internet page

Guide

To find your lost iPad you must configure the iCloud settings on your iPad IN ADVANCE. See also the documentation iCloud configuration.

Important!!! When your iPad is turned off or cannot get a network connection via Wi-Fi or 3G the current location of the iPad cannot be found!!!

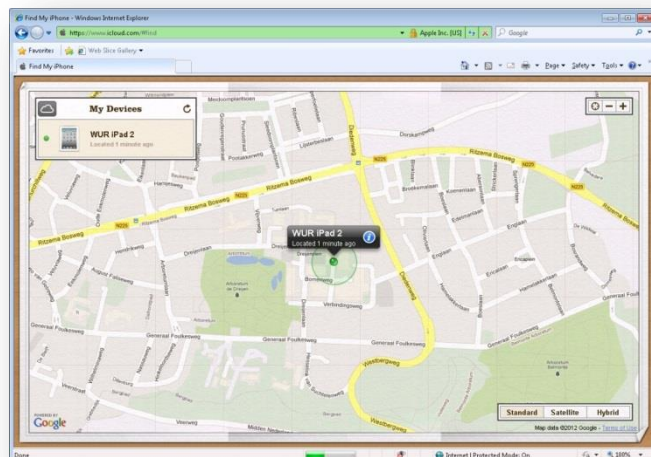
Start Internet Explorer and browse to <https://www.icloud.com>



Specify your Apple ID and Password and click on the arrow or press enter.



When your iPad is turned on and can get a network connection via Wi-Fi or 3G the current location of the iPad will be shown. Otherwise the last known location will be shown.



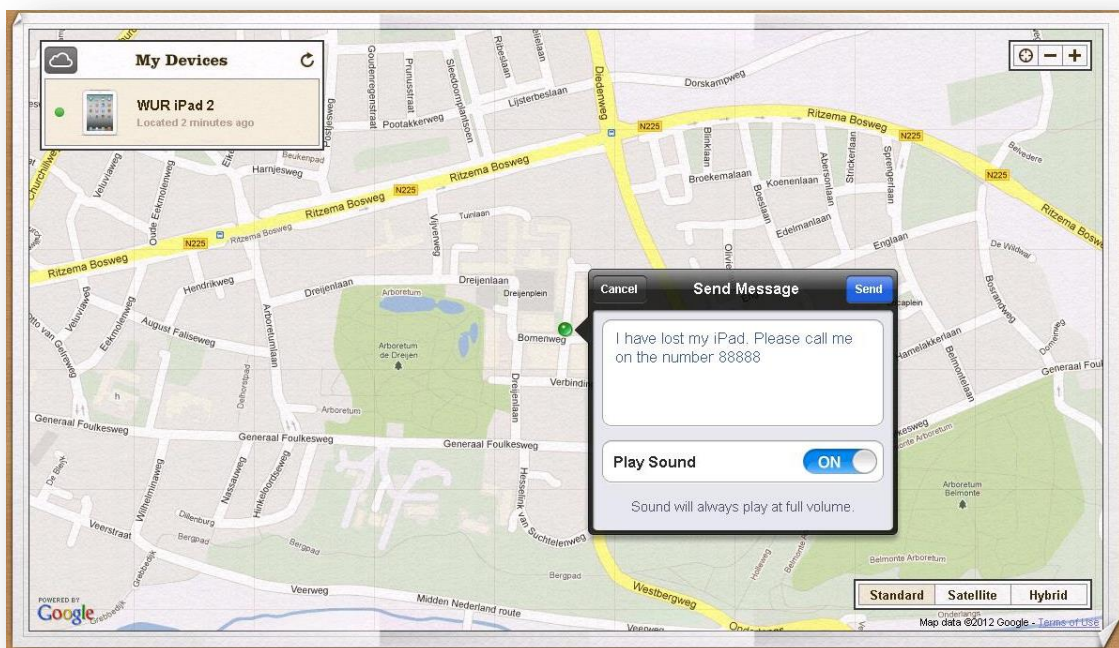
Click on the blue i (📍) for more option for



Click on one of the options below:

- [Play Sound or Send Message](#)
- [Remote Lock](#)
- [Remote Wipe](#)

Play Sound or Send Message



Enter your message, choose if you want to play a sound, and click on Send.

When your iPad is turned on and can get a network connection via Wi-Fi or 3G the message will be shown on the iPad after a short while. When the iPad is turned off the message will be shown when the iPad is turned on again and can make a network connection via Wi-Fi or 3G.



When the iPad is locked the message cannot be dismissed and the sound (when configured) will keep playing.



After the iPad is unlocked and the OK is tapped you will receive a confirmation e-mail on the mail address of your Apple ID.

Remote Lock



Enter the passcode twice and click on Lock

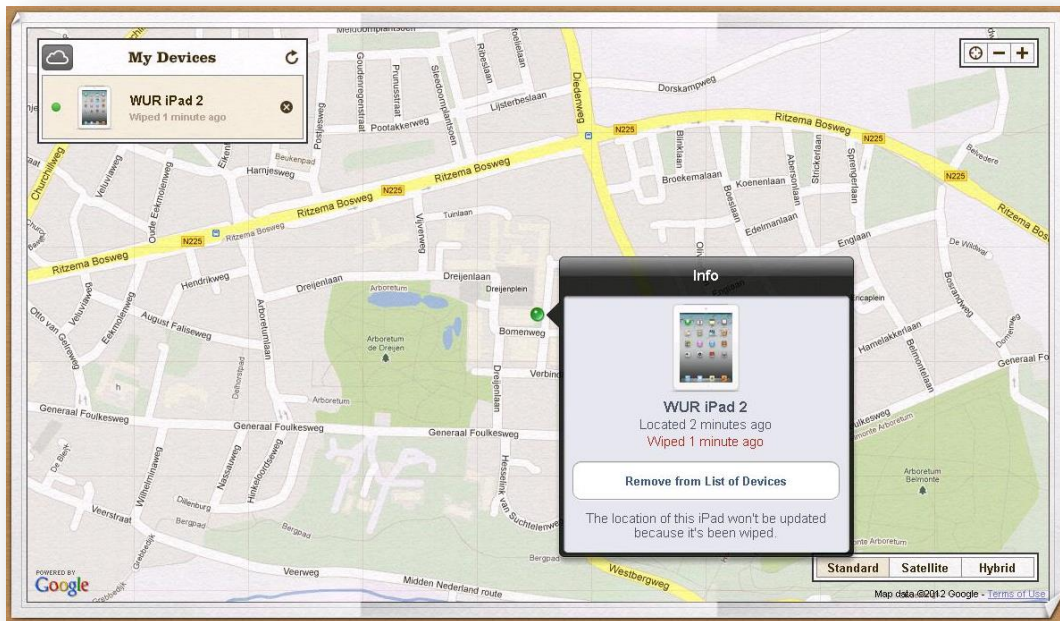
Click on Lock iPad. When your iPad is turned on and can get a network connection via Wi-Fi or 3G the iPad will be locked. When the iPad is turned off and the iPad will be locked when it is turned on and can make a network connection via Wi-Fi or 3G. You will receive a confirmation e-mail on the mail address of your Apple ID.

Remote Wipe



When you are sure you want to wipe your iPad click on Wipe iPad. Caution! You will not be asked for confirmation and the process cannot be undone!

When your iPad is turned on and can get a network connection via Wi-Fi or 3G the iPad will be wiped and will restart. When the iPad is turned off the wipe will be performed when the iPad is turned on again and can make a network connection via Wi-Fi or 3G.



After you clicked on Wipe iPad your will get a question if you want to remove the iPad device from the list of devices on your iCloud. Click on Remove from List of Devices or Click the map if you choose to skip this step.