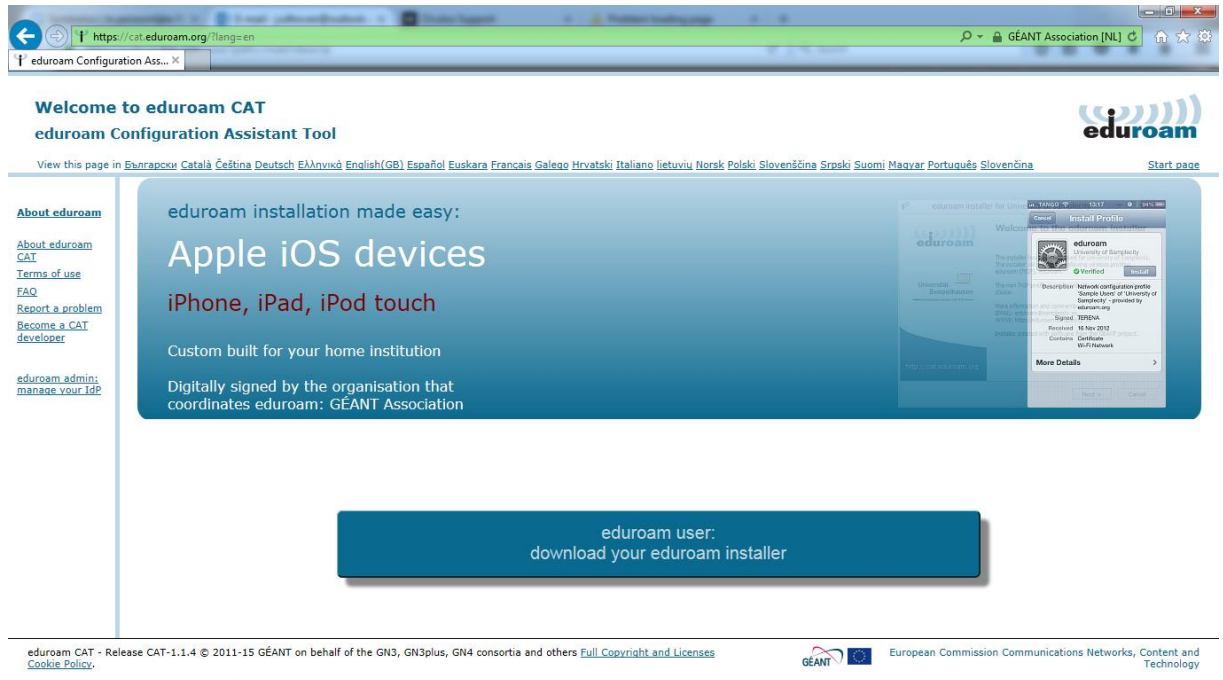


Having issues connecting to our wireless network wur-user or eduroam?

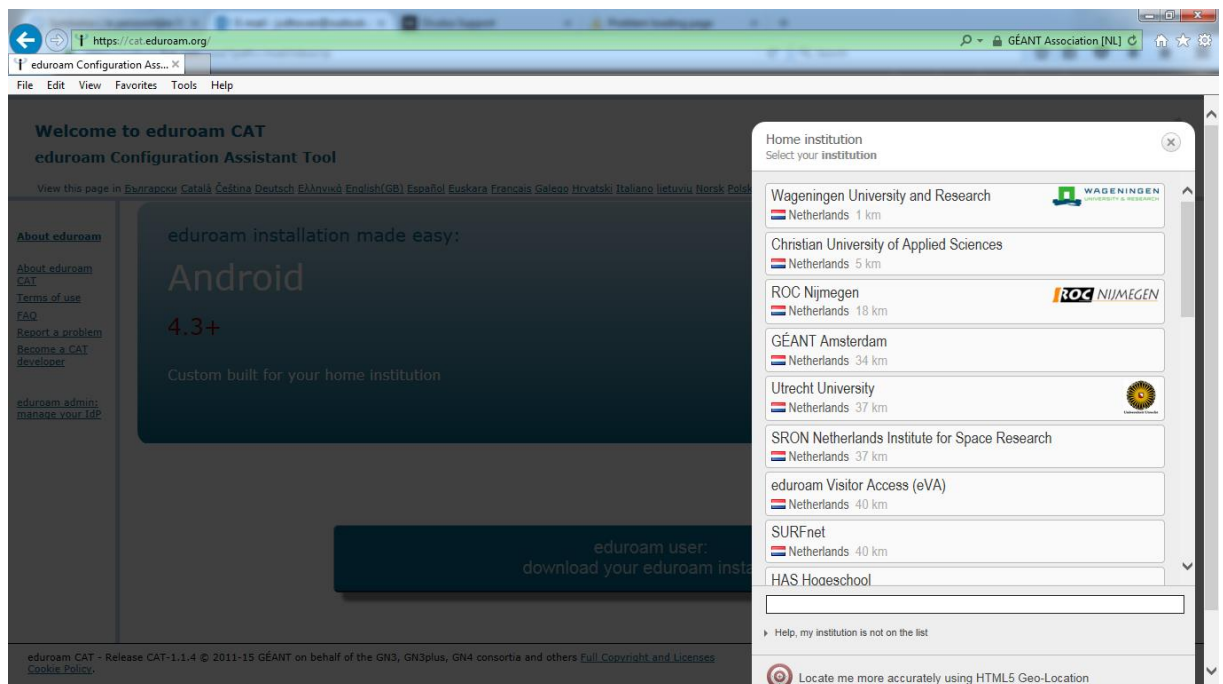
Connect your laptop to a wired network connection at WUR and follow the steps below:

Open <https://cat.eduroam.org/>

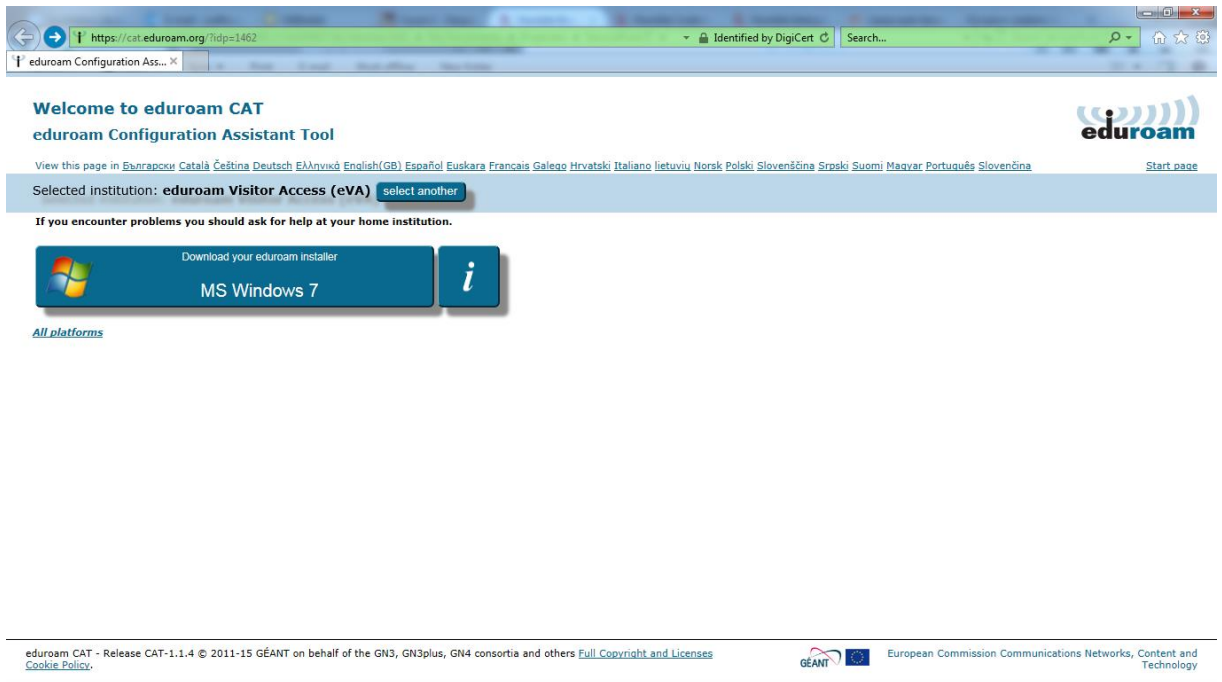


Choose your language

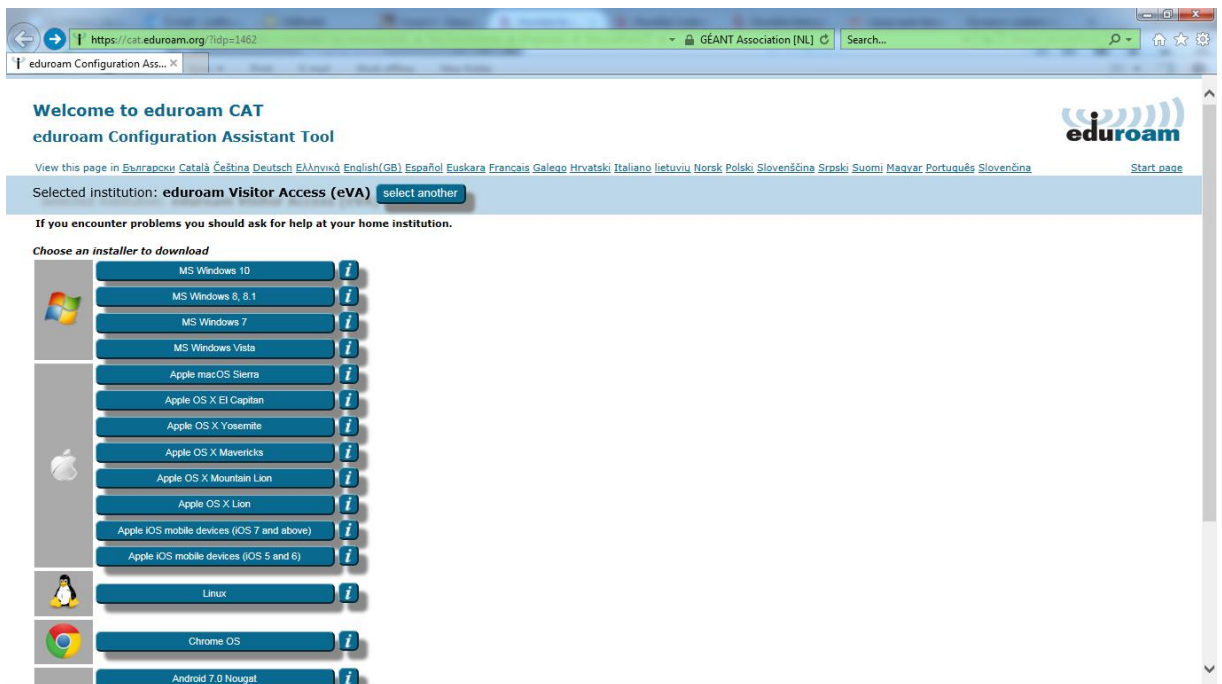
Click on the button "eduroam user: download your eduroam installer"



Click on "eduroam Visitor Access (eVa)"



Click "All platforms"



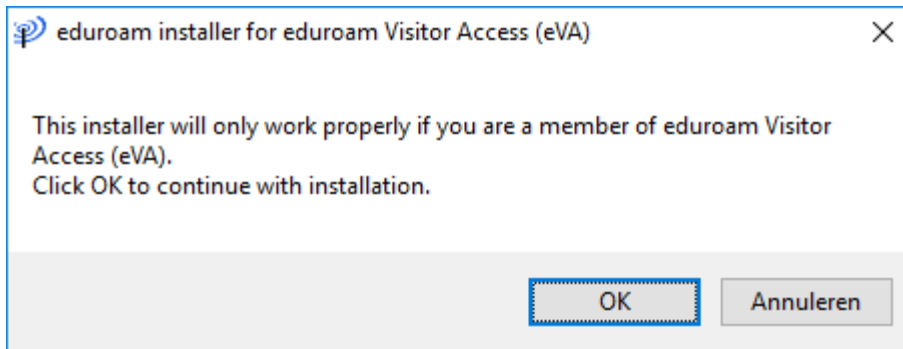
Choose the correct installer

The screenshot shows a web browser window with the URL <https://cat.eduroam.org/?idp=1462>. The page title is "Welcome to eduroam CAT" and the subtitle is "eduroam Configuration Assistant Tool". The eduroam logo is in the top right corner. A language selection bar is visible, with "Selected institution: eduroam Visitor Access (eVA)" and a "select another" button. Below this, there is a warning: "If you encounter problems you should ask for help at your home institution." A section titled "Welcome aboard the eduroam user community!" contains several paragraphs of text, including a direct link for download issues and a "Back to downloads" link. At the bottom of the browser window, a yellow download bar shows the file "eduroam-W10-eVAe.exe (214 KB) from cat.eduroam.org" with "Run", "Save", and "Cancel" buttons.

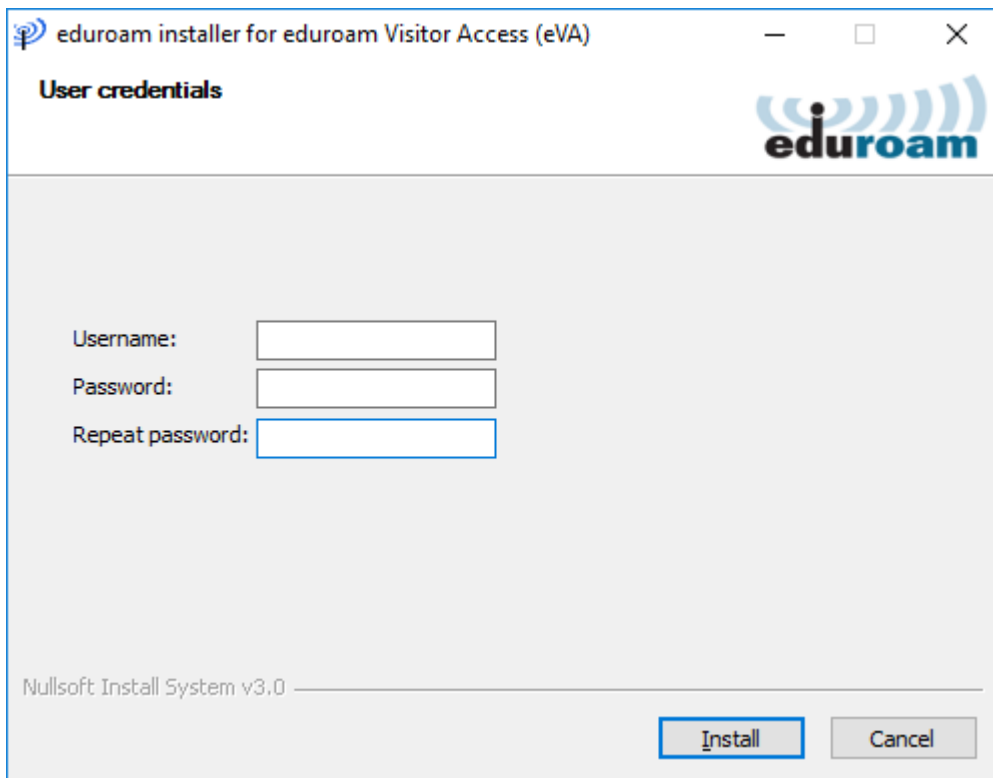
Click on the downloaded installer to start installation



Click Next

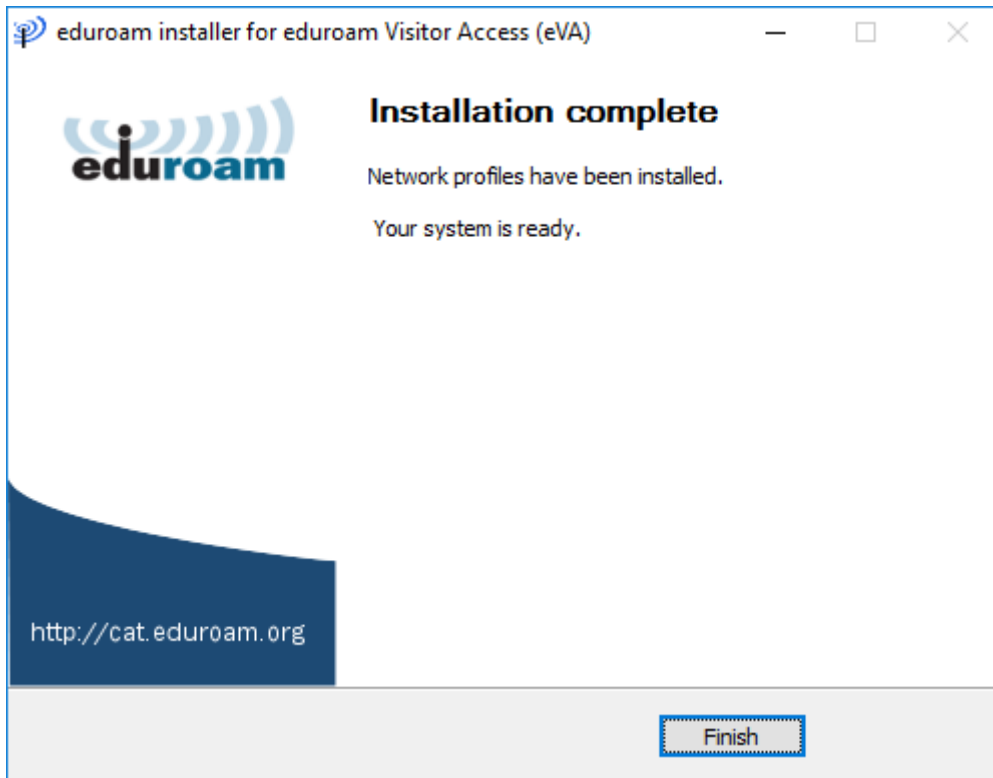


Click OK



Username: EDUroam guest accountname
Password: EDUroam guest account password

Click Install



Click Finish

You will be automatically connected to the WUR EDUroam wireless network until your guest account expires.