



THE HEBREW
UNIVERSITY
OF JERUSALEM

Welcome to the
Hebrew University of Jerusalem
Virtual Open Day



The Hebrew University in Numbers

Founded 1918

6 campuses

7 faculties

14 schools

990 faculty members

25,000 students

10% student body is international

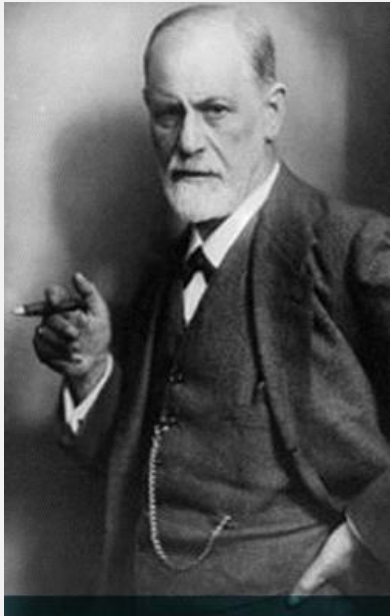
90+ countries



THE HEBREW
UNIVERSITY
OF JERUSALEM



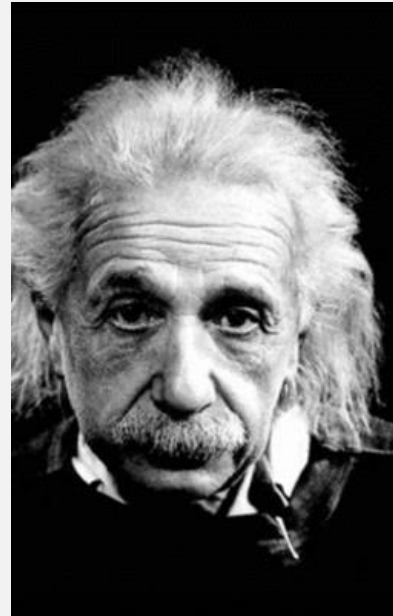
Our Founders: Their Vision, Our Legacy



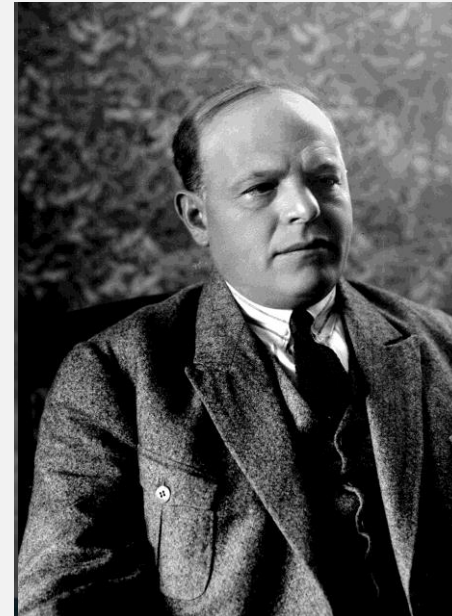
Sigmund
Freud



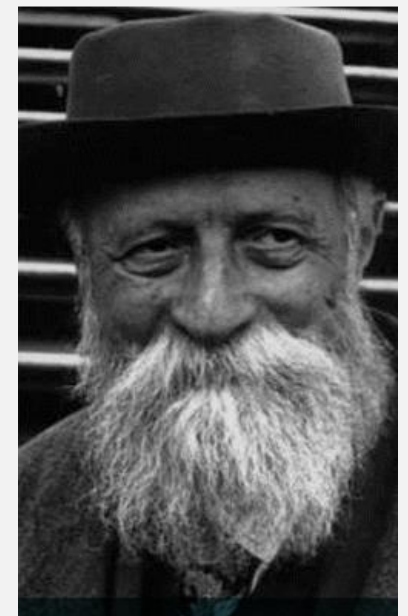
Chaim
Weizmann



Albert
Einstein



Chaim
Nachman Bialik



Martin
Buber

Why HUJI ?



THE HEBREW
UNIVERSITY
OF JERUSALEM



Israel's premier
university



Interdisciplinary studies



Innovation and creativity in
teaching and research



Internships



Applied research



Strong international
alumni community



Vibrant student life



Jerusalem as your
backdrop



Student-centered
approach



Awards and Excellence



THE HEBREW
UNIVERSITY
OF JERUSALEM

8 Nobel Prizes

1 Fields Medal in Mathematics

1 Turing Award in Computer Science

1 Abel Prize in Mathematics

1 Canada Gairdner International Award

14 Wolf Prizes

46 EMET Prizes

100 Rothschild Prizes

294 Israel Prizes

Top world 100 Most Innovative Universities (Reuters 2019)

Over 50 years of Technology transfer via Yisum



Areas of Strength



THE HEBREW
UNIVERSITY
OF JERUSALEM

Mathematics

Biomedical
Sciences

Business
Management
& Innovation

Genetics

Cancer
Research

Computer
Science

Cleantech

Pharmacology
and Medicine

Brain Research

International
Development

Agriculture

Jewish
Studies

Environmental
Sciences

Law

Nanoscience
and Advanced
Materials

Life
Sciences

Middle Eastern
Studies

Archaeology



Multi-Disciplinary Research

Cutting Edge Innovations and Transformational Technologies



100 Research centers



5 Affiliated hospitals



151 ERC Grants since 2007



Harvey M. Krueger Family Center for Nanoscience and Nanotechnology



Fraunhofer Cybersecurity Center



3D and Functional Printing Center



Azrieli Center for Stem Cells & Genetic Research



Alexander Grass Center for Bioengineering



Multidisciplinary Center for Cannabinoid Research



THE HEBREW UNIVERSITY OF JERUSALEM

Campuses



THE HEBREW
UNIVERSITY
OF JERUSALEM



Mt. Scopus



Ein Kerem



Edmond J. Safra



Beit Dagan



Rehovot



Eilat

Hagai Nativ



Level of Study Opportunities at HUJI

Short Term Courses

Languages Studies (Hebrew, Arabic and 30 others)

Internship Program - Technology & Innovation, Summer Science and more

Preparatory Programs (Mechina)

Study Abroad and Exchange Programs

Master's Studies

PhD and Postdoctoral Research



International Graduate Degree Programs



STEM

- MSc, PhD in Physics
- PhD in Mathematics
- MSc, PhD in Chemistry
- MSc, PhD in Life Sciences
- MSc, PhD in Computer Sciences and Engineering
- PhD in Bioengineering
- PhD in Brain Sciences



Medicine

- International Master in Public Health MPH
- MSc, PhD in Biomedical Sciences
- MSc, PhD Programs, School of Pharmacy



International Graduate Degree Programs



Humanities

- MA in Bible and the Ancient Near East
- MA in Jewish Studies
- MA in Jewish Education
- MA in Islamic and Middle Eastern Studies
- Blended Masters in Jewish Education
- MA in China Studies
- MA in Archeology- **New**



Business Studies

- International StartUp 360° MBA Program



Law

- LLM in Human Rights and International Law
- MA in Human Rights and Transitional Justice



Social Work

- MA in Non Profit Management and Leadership



International Graduate Degree Programs



Agriculture, Food and Environment

- MSc in Plant Sciences Programs
- MSc in Animal Sciences
- MSc in Environmental Sciences
- MSc in Nutritional Sciences
- MSc in Viticulture and Enology
- MSc in all fields - Research Thesis Track



Social Sciences

- MA in Community Development Studies (GLOCAL)
- MA in Israel Studies
- MA Program in Contemporary Germany: Politics, Society and Culture
- MA in Smart Cities and Urban Informatics **New**
- MA in Conflict Resolution
- MA/ PhD - The Bogen International Graduate Program in Economics

Meet our students

Martine Wolber, Germany

MA in Community Development Studies (GLOCAL)

Scholarships

Different types of scholarships are available

- Program merit scholarships
- Faculty level scholarships
- Experimental supervisors sponsored scholarships



THE HEBREW
UNIVERSITY
OF JERUSALEM



THE HEBREW
UNIVERSITY
OF JERUSALEM

Student Support

- Pre-arrival Service
- Academic Advisors
- Dorm Counselors 24/7
- Buddy System
- Psychological Support Services
- Learning Disability Center

Meet Ben Ben Zabelshansky
Graduate Student Life Coordinator





Co-Curricular Activities

- Social and Cultural Activities
- Weekend Programs
- Field Trips
- Sports Centers
- HUJI Innovate Center

Meet our students

Marc Fein, USA

M.A. in Nonprofit Management & Leadership





THE HEBREW
UNIVERSITY
OF JERUSALEM

University Housing



Launch poll

Unprecedented Times 2020/21



THE HEBREW
UNIVERSITY
OF JERUSALEM

- Bimodal delivery in Fall Semester
- Continue supporting incoming mobilities including travel and visa guidance, self-quarantine support.
- Campus Health Safety Regulations
- Virtual Social Programming
- 24/7 emergency support



Acceptance Requirements for Graduate Programs



THE HEBREW
UNIVERSITY
OF JERUSALEM

General Admission Requirements

- Bachelor's degree
- English Proficiency Requirements – according to the program of study, as listed on the website.

Departmental Requirements

GRE - for admission to the Bogen International MA in Economics.

GMAT - Required for admission to the MBA program (quantitative score only).

Additional requirements may be checked in the program websites



Acceptance Process for Graduate Programs

1. Check that you meet the admission requirements.
2. Submit your application forms online.
3. Pay your application fee online.
4. On completion of steps 1-3, your application will be reviewed and considered.
5. On completion of the review of your application, you will receive an official letter of acceptance/ decline.

Note: Graduate applicants are welcome to apply to two different programs simultaneously.



THE HEBREW
UNIVERSITY
OF JERUSALEM



Acceptance Process for PhD Students

Pre-Requisites

- A. Master's degree with thesis from a recognized University with a minimum average of 85
- B. Consent for supervision from a HUJI researcher
- C. Approval from the Authority for Research Students to pursue research in your field of choice

Each candidacy is subject to approval from the interdisciplinary doctoral committee.
Personal interviews or examinations may be required.



THE HEBREW
UNIVERSITY
OF JERUSALEM

Questions & Answers

Stay in touch: contactus@mail.huji.ac.il

Google HUJI International

WhatsApp +972-54-882-0487

