

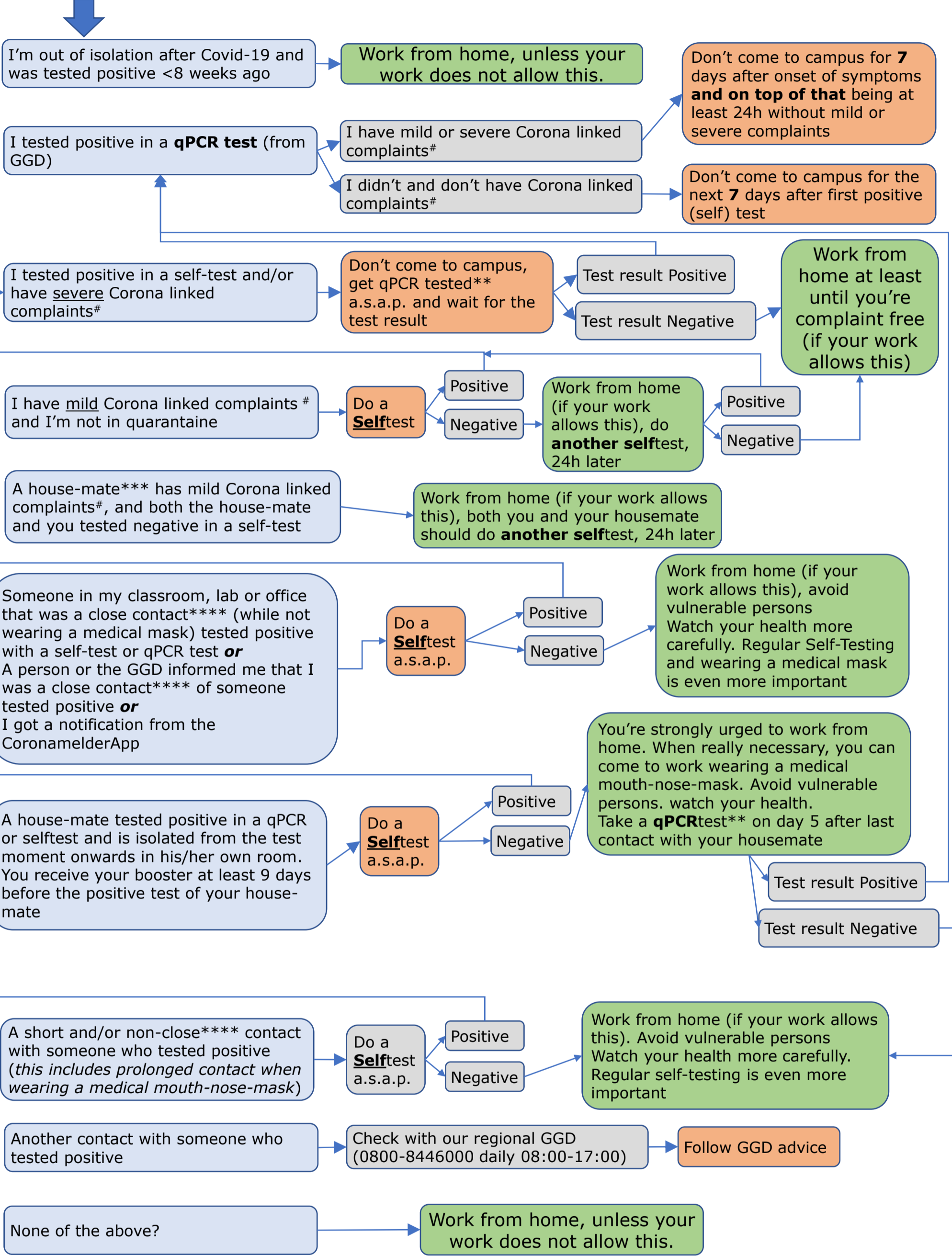


Can I come to a WUR location?

Use this checklist to take your own responsibility and check it every time you want to come to Campus. This checklist applies when you're not considered vulnerable^{##}
The latest version of this checklist is always available at wur.nl/cicwl-staff

I'm fully vaccinated* (including Booster ≥7 d ago)

Check the blue box that applies



*You're considered fully vaccinated when you finished your Pfizer/Moderna/AstraZeneca/Janssen vaccination series (series might consist of a confirmed infection + 1 vaccination) AND received a booster vaccination (Pfizer/Moderna) more than 7 days ago. This applies equally for a full vaccination series +booster with another WHO EULPQ approved vaccine.

**GGD test facility in Wageningen at Agro Business Park 99-101, walk in hours (that is, without appointment) 9:00-16:30. Alternatively you can make an appointment via Coronatest.nl or 0800-1202.

***A house-mate is a person with whom you're sharing facilities such as kitchen and/or bathroom and/or living room. Sharing only a walkway/corridor doesn't make you house-mates.

****Close contact is >15 minutes within 24h at <1.5m distance, or when kissing or hugging some-one (irrespective of duration). When you've properly worn a medical mouth-nose-mask (ii/iir/ffp2) during that contact, you're not considered a close contact.

#Severe Corona linked complaints are fever and/or shortness of breath and/or sudden loss of taste/smell. Mild Corona linked complaints are: cold symptoms such as nasal cold, runny nose, sneezing, sore throat that are not directly linked to a known condition (e.g. hay-fever).

##Vulnerable are persons defined at rivm.nl (in dutch) that include a.o. persons >70y, having severe chronic lung or cardiovascular disease, non-adjusted diabetes or are morbid obese (BMI>40). In these cases indicated self-tests should be replaced by PCR tests.

Note: When the GGD (Municipal Health Service) contacts you, they might give you a personal advise that deviates from the one given here, in that case follow their advice.

Rules at Wageningen University & Research locations

Stick to the WUR Corona Protocol

Find the most current protocol on the [WUR website](http://wur.nl) Do you see someone around you with symptoms or who does not comply with the protocol? Then address him or her kindly.



Wear a (medical) nose-mouth mask



Follow indicated routes



Wash or disinfect hands often



Sneeze and cough in elbow



Keep 1.5m distance (not required in education buildings)



Self-test 2x/week Order them at Zelftestonderwijs.nl

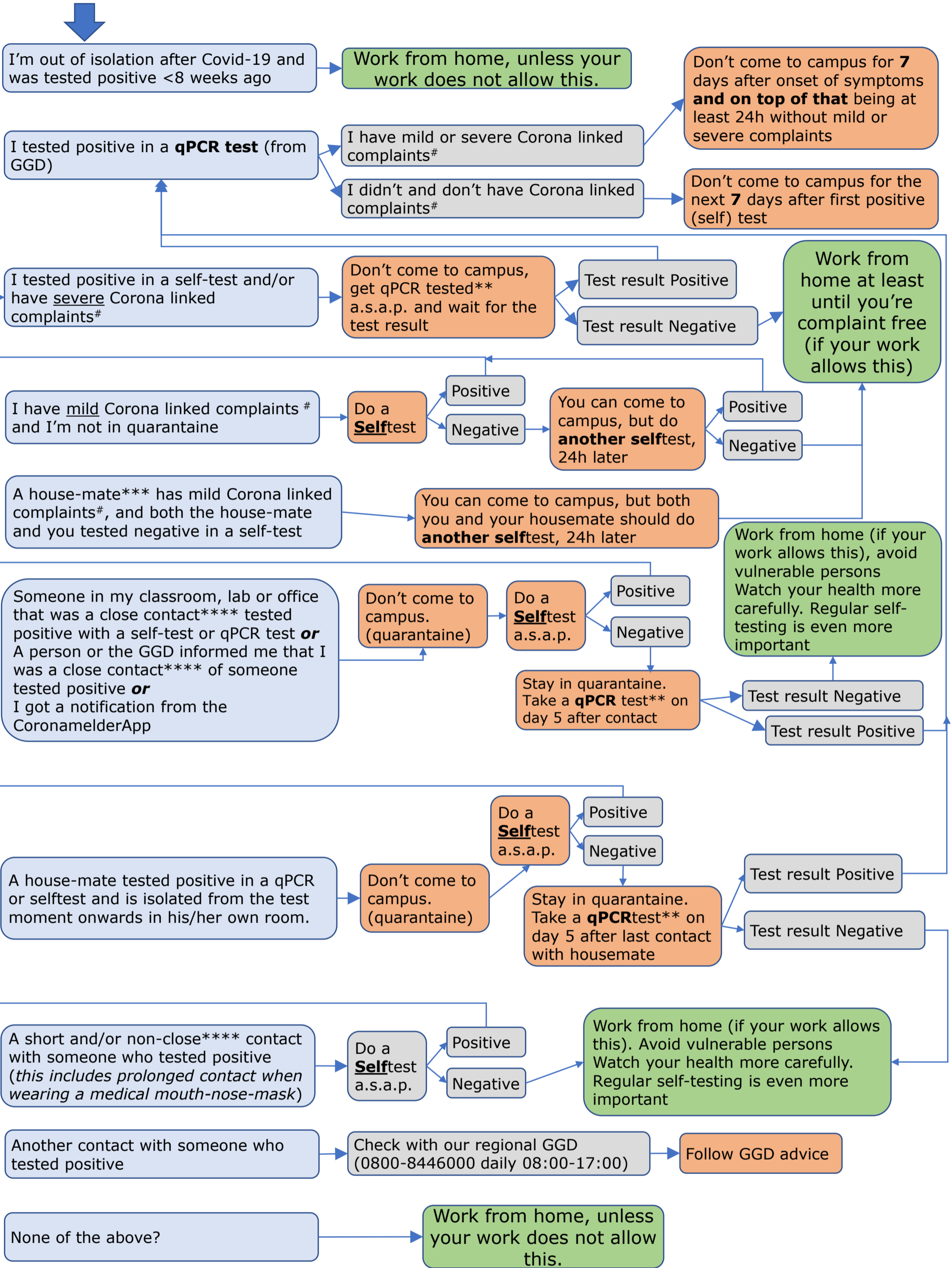


Can I come to a WUR location?

Use this checklist to take your own responsibility and check it every time you want to come to Campus. This checklist applies when you're not considered vulnerable^{##}
The latest version of this checklist is always available at wur.nl/cicwl-staff

I'm NOT fully vaccinated* (incl. booster <7 days ago)

Check the blue box that applies



*You're considered fully vaccinated when you finished your Pfizer/Moderna/AstraZeneca/Janssen vaccination series (series might consist of a confirmed infection + 1 vaccination) AND received a booster vaccination (Pfizer/Moderna) more than 7 days ago. This applies equally for a full vaccination series +booster with another WHO EULPQ approved vaccine.

**GGD test facility in Wageningen at Agro Business Park 99-101, walk in hours (that is, without appointment) 9:00-16:30. Alternatively you can make an appointment via Coronatest.nl or 0800-1202.

***A house-mate is a person with whom you're sharing facilities such as kitchen and/or bathroom and/or living room. Sharing only a walkway/corridor doesn't make you house-mates.

****Close contact is >15 minutes within 24h at <1.5m distance, or when kissing or hugging some-one (irrespective of duration). When you've properly worn a medical mouth-nose-mask (ii/iir/ffp2) during that contact, you're not considered a close contact.

#Severe Corona linked complaints are fever and/or shortness of breath and/or sudden loss of taste/smell. Mild Corona linked complaints are: cold symptoms such as nasal cold, runny nose, sneezing, sore throat that are not directly linked to a known condition (e.g. hay-fever).

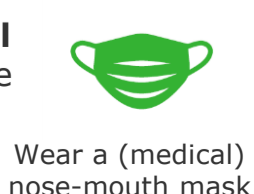
##Vulnerable are persons defined at rivm.nl (in dutch) that include a.o. persons >70y, having severe chronic lung or cardiovascular disease, non-adjusted diabetes or are morbid obese (BMI>40). In these cases indicated self-tests should be replaced by PCR tests.

Note: When the GGD (Municipal Health Service) contacts you, they might give you a personal advise that deviates from the one given here, in that case follow their advice.

Rules at Wageningen University & Research locations

Stick to the WUR Corona Protocol

Find the most current protocol on the [WUR website](http://wur.nl) Do you see someone around you with symptoms or who does not comply with the protocol? Then address him or her kindly.



Wear a (medical) nose-mouth mask



Follow indicated routes



Wash or disinfect hands often



Sneeze and cough in elbow



Keep 1.5m distance (not required in education buildings)



Self-test 2x/week Order them at Zelftestonderwijs.nl